

Callala Bay NEWS

October 2023

Issue 120-2023

Monthly Magazine from the Callala Bay Community Association Incorporated



The Callala Bay NEWS *proudly supports your local community
by helping to fund projects that benefit all residents.*

Consider supporting us by subscribing for a small yearly fee.

Contact: editor.cbcanews@gmail.com



ATB GARDENS YARDS + TREES

All aspects of garden, yard & property maintenance

- Lawn Mowing • Irrigation • Fertilising • Aerating
- Tree Work • Landscaping • Hedging • Mulching
- Rubbish Removal • Domestic & Holiday Rental Cleaning
- High Pressure Water Cleaning • Garden & Yard Make Overs



• Commercial • Domestic • Rural Properties

0415 732 801

ABN: 16 821 580 073

andrew@atbcontractors.com.au | www.atbcontractors.com.au



Enrolment for children 2 to 5 yrs
Open 8am – 4.30pm
University & TAFE trained teachers
'School Readiness' curriculum
Fee rebates available to eligible families

Awarded 'Exceeding National Quality Standards' by the NSW Department of Education and Communities.

For further information please call us on **4446 6089**



first national
REAL ESTATE

Callala

4446 4313



Callala First National has been servicing the local area for more than 19 years and continues to strive to provide a service above and beyond our clients expectations. If you are considering selling or renting your property contact our friendly team on 4446 4313 or drop into our office at 58 Boorawine Terrace, Callala Bay.
www.callalafirstnational.com.au

CALLALA BAY NEWS

*A monthly newsletter of the
Callala Bay Community Association Inc.*
ABN: 68 031 980 561
www.callalabaycommunityassociation.com
Email: admin@callalabaycommunityassociation.com
PO Box 14 Callala Bay 2540

President

Anna Gardner

Vice President

John Fowler

Secretary

Position Vacant

Treasurer

Kate Chapman

Minutes Secretary

Jacinta Flattery-O'Brien

COMMITTEE MEMBERS

Merry Dickins

Morris Dickins

James Morris

Public Officer/CB News Editor

Gary Chapman

INDEX

Culburra Beach & Districts	
Men's Shed	Pages 4-5
CBCA Meeting Report.....	Page 6
Emergency Contacts.....	Page 12
Bushcare	Page 13
Callala Community Garden ...	Pages 14-15
Callala Markets	Page 20
Culburra Beach & District	
Garden Club.....	Page 22
Notes from the Medical Centre	Page 26
Community Contacts.....	Page 30

Note from the Editor:

The CBnews proudly supports our community, consider subscribing for a small yearly fee.

Please contact us with any local issues or concerns with the intention of having it published.



Callala Gallery

15 Callala Beach Road, Callala Beach

Artworks by **Local Artist Roslyn Chatham** in Oil, Acrylic, Watercolour, Pastel, Mosaic, Mixed Media, Resin Work.

Landscapes, Seascapes, Local Scenes, Fantasy Art, Portraits, Commissions.

Open by Appointment Only

Phone: 44465770. Mobile : 0407465770

Email : Roslyn.chatham@bigpond.com

Callala Gallery on Facebook



Scott Horsburgh

Ph: 4446 6544

18/55 Emmett Street
Callala Bay 2540

**Your Local Butcher
The Meat Specialist**



USE, LEARN & SHARE SKILLS



CALL US ON
0499 452 095

**CULBURRA BEACH &
DISTRICTS MEN'S SHED**

FIND US BEHIND THE POLICE STATION.

Culburra Beach & Districts Men's Shed

As reported last month, we successfully handed over 25 nest boxes to Wildlife Rescue South Coast in August. Our appreciation to Veolia Mulwarra Trust for the funding of the materials involved; the final products are already in use for the rehabilitation and ultimate release of injured native wildlife in our area.



Debbie and Cheryl from WRSC with their new nest boxes

Our "Fix it Monday" continues to provide service to local residents with minor repairs and refurbishments. However, we won't be open on Monday, 2 October (Public Holiday) so please save up those troublesome jobs until next month. Our welding team is available to assist with various repairs to metal items.

Thanks to the donation of paint from Dulux, through their local staff, we are currently undertaking an internal repaint of the Shed to modernize and brighten up the walls and ceilings. We hope that you'll enjoy the new look on your next visit to our showroom.

Following funding from the Halloran Trust, we are moving forward with the installation of a high-level awning over our main roller shutter door. We have located a local building contractor for the project and are currently seeking Council approval to proceed with the works. We look forward to bringing this job to fruition in the coming months.

We'll be at the Culburra Beach Markets on Sunday 1 October and the Callala Markets on Saturday 14 October. That's the "Voice" Referendum Day and we'll be sharing the grounds with Electoral Commission staff and voters, so we hope to have a bumper attendance.

We look forward to seeing you at the Markets to check out our full range of nest boxes and other timber craft. Or just call in for a chat and see what the Shed can offer you.

The Shed is open on Mondays and Wednesdays from 8.30am to 1.00pm for door sales and membership enquiries. Come down for a coffee and check out our workshop and equipment.

Follow us on Facebook, or join our Facebook group, to stay up to date on products, events and other items of interest. You can contact us through Facebook, via email to CBDMS1@outlook.com or by phone on 0499 452 095.



Callala OOSH By Katie

Callala Before and Afternoon Care for school-aged children by qualified and caring staff.

For information please call Katie-

0419917793 or 0427976669

email: callalaooshbykatie@gmail.com

JERVIS BAY FILM TRANSFERS

Records



Cassettes



Onto
CDs



VHS movies



onto DVDs

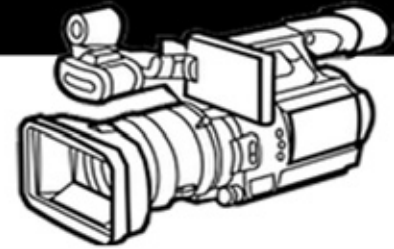


**8mm Films onto USBs
Convert CDs to Mp3s
Scan Slides onto USBs**

Call: 0401076338

jervisbayfilmtransfers.com.au

Wedding Videographer



**We Build
Corporate
Websites**

YOUR AD HERE

Advertise Your Business With The **CBnews** Today!

Very Affordable Rates For All Businesses!

Contact the Editor for more info

editor.cbcanews@gmail.com

The Callala Bay News Publication is proudly funded by the Callala Bay Community Association with the help of our local business sponsors

CBCA Meeting Report

The CBCA Meeting was held Wed 13 Sep 23 with 23 people attending.

Watercraft Storage

A presentation by Michael Roberts (Manager Environmental Services from Shoalhaven City Council (SCC) and Tony Pearman (Lead Ranger Services SCC) discussed the ever-present issue of Watercraft Storage along the Callala Bay foreshore, adjacent to the boat ramp. They discussed the most recent Legislation (Storage of Watercraft- Public Spaces- Unattended Property Act 2021) which provides the bases for Watercraft removal. Basically, if the craft is no longer usable and ownership is not known, determine if removal is possible and if not, the council will take action. The Council will affix a yellow notice giving the owner 7 days' notice before the offending watercraft is removed. If the offending watercraft are not identified because of their poor condition, or possibly they are perhaps a hazard, or could cause injury or harm to the environment the offending watercraft will be removed.

They also advised those attending of the Coastal Management Program. The Public Exhibition is due in November 2023 and Community input is vital.

Warning against invasive floating Frogbit

The prohibited weed Frogbit (*Limnobium laevigatum*) has been detected in a Bomaderry waterway prompting a dire warning to the community.

The noxious aquatic weed from Central and South America invades and smothers waterways and must not be bought or sold in NSW and must be eradicated when found.

Dr Michael Roberts, Manager – Environmental Services said the weed may be used as an aquarium plant, and illegal dumping of aquarium or pond plants in waterways has been the main cause of Frogbit infestations in NSW. He urged residents to familiarise themselves with the bright green, glossy leaves of Frogbit and report the weed to Council.

“This weed has the potential to cause real harm to the Shoalhaven’s waterways and aquatic animals,” said Dr Roberts.

Sewerage leakage

Andrew McFay, Shoalhaven Water briefed the meeting on the cause of the Sewerage Leak at Callala Creek. After the report was made of a ‘possible’ sewerage leak in the pipe at the base of the pedestrian bridge across Callala Creek. After testing it was determined there was a sewerage leak and a temporary fix was installed within 12 hours, which was a great achievement. The existing black pipe is a temporary measure, and it should be repaired by mid-November.

Parking at the Callala Bay Boat Ramp

On 12 Sep all CBCA members were advised by email of an investigation by Council to consider the installation of restricted parking conditions to maximise parking efficiency for vehicles with trailers. The council reference is ‘3868EContainer (D23/364425) if you missed the email. Comments should be forwarded by 20 Oct 23, and can be forwarded to the Council CEO via the Council email council@shoalhaven.nsw.gov.au.

Defibrillator

The Culburra Health Service awarded the Callala Community Centre with a grant to purchase and install a defibrillator in the Centre. (see separate article page 26)

“If you see this weed in waterways or see it being bought or sold, we need to hear from you immediately,” he said.

Frogbit is a perennial, fast growing, floating aquatic weed which can:


- form dense mats that form large dense mats across waterways
- reduce light, food and shelter for fish and other aquatic animals
- reduce the number of native plants and birds that can live in or near the waterway
- block waterways and channels, and reduce recreational activities, like swimming, fishing and boating.

The Biosecurity Act 2015 classifies Frogbit as ‘Prohibited Matter’. Any person who deals with prohibited matter or a carrier of prohibited matter may be found guilty of an offence.

If you become aware or suspect the presence of prohibited matter please call Council on 1300 293 111. For more information on the weed go to NSW WeedWise.



Website Design • Graphic Design
Printing • Logo Design

 **0414 785 776**

 **info@scottmorgan.com.au**

 **scottmorgan.com.au**



Callala Bay
Open 7 Days A Week
Market-Fresh Fruit and Vegetables
Lotto Newspaper ATM

Ph: 4446 4811

It Pays to Shop Independent

Located in Bayview Plaza, 55 Emmett Street, Callala Bay

How the locals like it.

FIONA PHILLIPS MP

Federal Member for Gilmore


I'm here to help with issues like Medicare, Centrelink, aged care and pensions, the NDIS, Veterans' Affairs and community grants. I can also arrange flags, and special birthday and anniversary messages.

Please let me know how I can help you.

 (02) 4423 1782

 Fiona.Phillips.MP@aph.gov.au

 fionaphillips.com.au

 3/59 Junction St Nowra NSW 2541 &
1/6-8 Orient St, Batemans Bay NSW 2536



Authorised by Fiona Phillips MP, Nowra.

ANGLICAN CHURCHES

of Culburra Beach | Callala | Currarong

Callala Church Service - 5pm Sunday

All Welcome | 4:30pm Afternoon Tea | Kids Church

St Marks, 2 Hunter Street, CALLALA BAY

Caterpillar's Playgroup - 9:30am Friday @ Culburra Beach Anglican

Kids Club -Friday Afternoon @ Callala Bay Anglican

289 Youth Group - Friday Evening @ Callala Bay Anglican

For more information: Rev. Paul McPhail
m: 0414 616 860 e: culburra.anglican@gmail.com
www.culburraanglican.org.au



Having problems with your computer?

Hayton.Biz IT

Local computer support & service.

Onsite IT & computer support for business and home users.

Experienced technicians, same day service, No call out charge for the local area* & competitive rates.

Laptop repairs/servicing also undertaken.

- Computer repairs
- General PC report
- Computer servicing
- General PC advice
- Internet problems
- Email setup
- Virus/malware removal
- Network configuration
- Domain registration
- Server installation
- Server support
- Backup configuration

0422 599 305

Call Today

Culburra Beach Orient Point Men's Shed Inc.

The Shed by the Lake

Location: Old Scout Hall Cnr West Crest & Wollumboola Lane

NEW MEMBERS WELCOME

You are invited to join the Longest Established Men's Shed in Culburra, learn new skills and bring your own, come and enjoy the company of our friendly members and participate in a variety of activities

We are open 8:30am - 1pm Tuesday, Wednesday & Thursday

All enquiries:

John Castellan: 0498 023 781

Max Ford: 0403 204 847



*Where the
Beach & Bay
come to play!*

GOLF COURSE

Information & bookings
callalagolf@bigpond.com
Open Every day (02) 4446 5313 opt 2
(Check for closures during wet weather)

FRIDAY

Fitness Exercise
Class from 10:30am



\$14 Lunches Monday to Friday.

TUESDAY

\$23 RUMP Night (Dine-in only).

WEDNESDAY

\$18 Chicken Schnitty Night (Dine-in only).

THURSDAY

\$20 Pizza Deal (Dine-in only).

RAFFLES

THURSDAY

Bowlers Extensive Raffle from 6pm.
Members Badge Draw!

FRIDAY

Meat Mart - Best value Friday night in town - Meat Trays & vouchers valued @ over \$1,000 – Tickets on sale 6pm
Draw commences approx 7pm.

SATURDAY

LIVE MUSIC EVERY WEEK!

Fisho's Raffle from 12 noon to 1:30pm

SUNDAY

Meat & Seafood Raffle - Tickets 4pm - Drawn 5pm
Members Badge Draw!
Fisho's Weigh In – 2pm 4th Sunday each month.

BEACH & BAY
STAY CALLALA

MOTEL NOW OPEN!

ENQUIRE AT:

accommodation@clubcallala.com.au

MONDAY - Close @ 7pm.

TUESDAY

MEMBERS Happy Hour 4 - 6pm.

Free Trivia – 6:30pm Start.

WEDNESDAY

NPL Poker – \$12 Entry -

Includes 2 Lifelines - 7pm start.

All games are sit & go – 10 per sit & go.

THURSDAY

Bingo – Eyes down at 11am

LAST SATURDAY EACH MONTH

Mega Meat Raffle + 2nd Chance Draw =

5 x \$100 in points to be won +

BONUS MEMBERS BADGE DRAW!

BOWLS

Monday- Indoor 12 noon.

Wednesday – Callala Mixed Social Bowls.

Names in by 12:30pm for 1pm start.

Every day – Barefoot Bowls

\$10 per person – Everything supplied.

Kids 12 & under play for free.



Phone: 02 4446 5313

43 Callala Beach Road, Callala Beach

Courtesy Bus available 7 days – call Club to book.

www.clubcallala.com.au



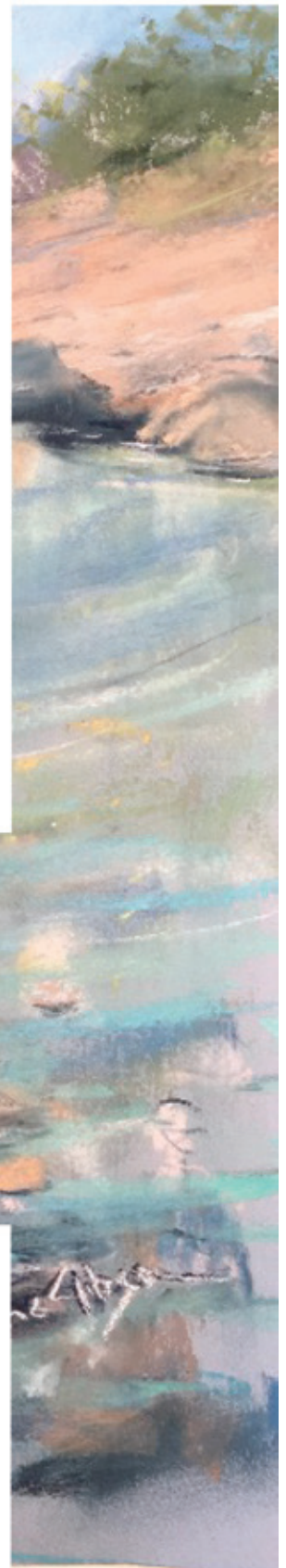


CURRARONG ART TRAIL

FIRST SATURDAY OF EACH MONTH
10AM - 2PM

MEET THE ARTISTS IN THEIR STUDIO AND EXPLORE
WONDERFUL ART PRODUCED IN CURRARONG

BRING YOUR FAMILY AND FRIENDS IT'S FREE



FOR MORE INFORMATION CONTACT
CURRARONGARTTRAIL@GMAIL.COM



CHECK OUR WEBSITE
WWW.CURRARONGARTTRAIL.COM.AU
FOR ART TRAIL MAP, ARTIST
LOCATIONS AND DETAILS

SPONSORS

Shoalhaven
SOUTH COAST - NSW



CURRARONG ARTS & CRAFTS

ClarendonHomes



Claire Graham



Emergency Phone Contacts

Situation/Service	Phone Number	Website
Injury or Health Crisis	000	ambulance.nsw.gov.au
Motor Vehicle Accident	000	police.nsw.gov.au
Police	000	police.nsw.gov.au
Police – Non Emergencies	131 444	police.nsw.gov.au
Police Crime Stoppers	1800 333 000	police.nsw.gov.au
Household Fire / Hazmat	000	fire.nsw.gov.au
Bushfire	000	rfs.nsw.gov.au
Shoalhaven RFS District Office	4424 4424	rfs.nsw.gov.au
Bushfire Survival Plan	-	rfs.nsw.gov.au
Bush Fire Information Line	1800 679 737	-
Flood, Storm and weather warnings	-	bom.nsw.gov.au
Storm / Flood	132 500	ses.nsw.gov.au
Power Outages	131 003	endeavourenergy.com.au
Main Road Closures	132 701	livetraffic.com
Local Road Closures	1300 293 111*	shoalhaven.nsw.gov.au
Shoalhaven City Council	1300 293 111	shoalhaven.nsw.gov.au
Shoalhaven City Council After Hours	4421 3100	shoalhaven.nsw.gov.au
Shoalhaven Hospital	4421 3111	-
Milton Hospital	4455 1333	-

If you are **deaf** or have a **speech** or **hearing impairment** dial **106** for the Text Emergency Relay Service

Useful Apps & Websites

Visitors to the area can download the following free mobile apps to stay informed of the latest advice and information in the event of an emergency.

Emergency+ App

The Emergency+ app is a free app developed by Australia's emergency services, Government and industry partners.

The app uses GPS functionality built into smart phones to help a Triple Zero (000) caller provide critical location details required to mobilise emergency services.



emergencyapp.triplezero.gov.au

Other Helpful Apps & Websites



Fires Near Me NSW



Floods Near Me



Weather Zone



COVID Safe



BOM



Marine Rescue



Live Traffic



Facebook



Twitter



DISASTER DASHBOARDS

shoalhaven.disasterdashboards.com/get-ready/overview



Bushcare

This month I'd like to offer some medically approved advice regarding one of our local insect pests, ticks. As Bush Care volunteers our team are familiar with effective preventative and treatment strategies, but I've found there is confusion in the wider community about how to kill ticks.

Globally there are approximately 100 types of ticks that can prey on humans. Fortunately in the Shoalhaven, there is only one tick that ends up latching onto people, it's commonly called the Australian paralysis tick. No, that's not because you are going to be paralysed if bitten by this tick! Although of course if you have any concerns after being bitten by a tick, particularly any immediate allergic type reactions, please seek medical attention.

Unfortunately, a lot of suggestions both in the community and online relate not to Australian ticks, but American ticks. If you go online and use the phrase 'Management of Tick Bites in Australia', you will find information from our Commonwealth Department of Health. The big message is, Don't Use Tweezers! This is because tweezers and similar implements, or just scratching it, will result in the tick reacting by releasing toxin into our bodies. No one wants that - it means a weeping, itchy wound site for about a week.

What you should do is, go to the Chemist and buy a tube of Lyclear - it's a cream used to treat scabies and costs less than \$15. The cream contains a chemical called permethrin which is quite safe to be in contact with your skin.

Sadly for ticks, this chemical basically melts their nervous system, almost instantly! To kill a tick put a blob (or ask someone else to do this if you can't reach the tick) about the size of a pea on top of the tick and cover the area loosely with a band aid. The tick will die quickly, but wait half an hour or so, then remove band aid, then you can scrape tick off with a fingernail. OK, for those saying 'ew' you can just wipe the cream off and leave the dead tick to fall off in due course. Or, OK, remove it with tweezers.

The other option is freezing the tick, using a tick specific cold spray, TICKTOX. Again this can be bought at the Chemist. When you buy this spray the pharmacist will give you a piece of card with two holes in it, a small one for tick nymphs, they are the tiny black dots, and a larger one for full grown ticks. You'll probably need assistance to use the card, someone needs to hold it in place before the spray is applied.

Of course prevention is definitely better than 'cure', so particularly during the warmer months, if you are in bushland, or even in your garden if you live near bushland, try to wear a long sleeved shirt and long trousers, enclosed shoes and in addition apply an insect repellent containing DEET. Any queries about information or opinions in this column, my [Diana] phone number is: 0419 531 902

Peter Rose EyeQ Optometrists

Visit eyeq.com.au for convenient online bookings

59 Kinghorne Street, Nowra
4421 4511



Peter Rose



Robert Rose

EyeQ
OPTOMETRISTS
your local
experts in eyecare



52 EMMETT STREET CALLALA BAY,
OPPOSITE THE SHOPS.

OPENINGTIMES:

Tuesday & Thursday Mornings from 8:30am till 11ish.

2nd Saturday each month for the produce stall 8am till 12md

Friday afternoon before the market setup and social evening - 3pm till 6pm BYO. Nibbles provided for members.

1st and 3rd Sundays 9am till lunch time.

Last Friday each month 9am to 11am Family Fun Friday.

OTHER TIMES IF YOU SEE US IN THE GARDEN PLEASE DROP BY

OR

CHECKOUT CALLALA COMMUNITY GARDEN FACEBOOK PAGE TO KEEP UP

OR

callalacommunitygarden@gmail.com

WHATS HAPPENING:

1. 1st Saturday Every Month 2pm GENERAL MEETING

2. Last Friday every month is Family Fun Friday 9am till 11am (weather permitting) Morning tea provided. For community not just members.

3. 2nd Saturday Every Month - PRODUCE STALL

- Come and meet the team and pick up some fresh produce from the garden. We pick it at your request. (Cannot get fresher than that) Checkout our surf board for produce available.
- Local Honey, Jams, pickles, cakes also available.
- A selection of potted plants and seedlings.
- Herbs available for free with exception of basil.

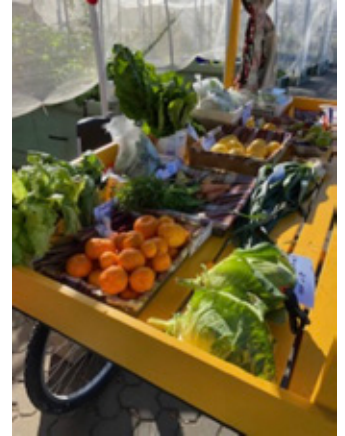
(PLEASE NOTE THAT PROCEEDS FROM THE SALE OF HONEY AND SOME JAM IS DONATED TO JUVENILE DIABETIC RESEARCH ASSOCIATION)



What produce do we have?

Snow peas and sugar snap peas are in abundance.

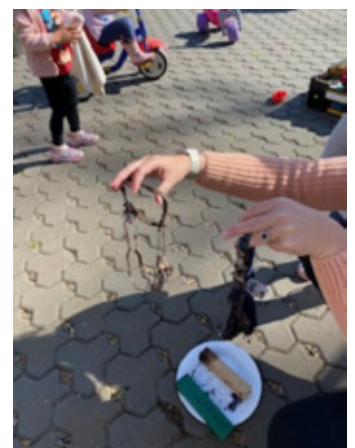
The market day, 9th Sept has silver beet, lettuce, (more than 1 type) radish, herbs (for free), rocket and rhubarb. Come see what else pops out of the soil.



Socials

- Friday 8th September our afternoon social get together while prepping for market day heard sooooo much laughter. It was quite chilly but lots of members arrived and the set up went to plan allowing much time to chat at the end
- After harvesting, cleaning, pricing, labelling, and setting up the members who attended to these activities, enjoyed lots of laughs. The next social afternoon will be 13th October from 3pm.
- When is the next working Sunday? 15th October with a barbeque provided to follow. BYO drinks (Weather permitting of course)
- Family fun Friday 29th September. So, bring along your little legs and enjoy a cuppa in the garden while the children have fun.

Proof that the soil in most of our garden beds is healthy. This is all that's left of cotton undies that the little family fun Friday children buried 2 months ago to test the soil. They had lots of fun digging them up to see the results.



This month's recipe is courtesy of one of our relatively new Members. Lyn (with 1 N) B. Thank you for your contribution.

Sugar snap peas, halloumi salad with ginger dressing

- 150 grms sugar snap peas
- 2 avocados
- 100 grms mixed leaves
- 1 pkt halloumi
- Ginger dressing
- 1 ½ Tablespoon mirin
- 1 ½ Tablespoon Japanese rice wine vinegar
- 1 Tablespoon olive oil
- 1 Tablespoon sesame seeds
- 1 teaspoon sesame oil
- 1 teaspoon castor sugar

Method

Mix dressing and set aside

Cut peas, cook halloumi on both sides, combine with salad leaves and peas, Optional: add cooked chicken Dress with ginger dressing and enjoy. Yum !!!!

CHRISTMAS IS 14 WEEKS AWAY



CCG Raffle is up and running.

Can you spare 2 hours between now and then to sit outside Callala Bay shops and sell some raffle tickets. Bring a friend. Raffle will be drawn 9th December at 12md at the garden.

There is something for everyone all ages.

Please call Robyn or Victoria for more details. Or talk to the members at the garden.

CONTACTS:-

Victoria Maudson: 0424 590 105

Gail Fitzgerald: 0412 930 080

Megan Hodges: 0433 668 453

Robyn Hannan: 0417 259 392

Crookhaven Mechanical Repairs

4447 5845

FREE Pick - Up Callala - Bay - Beach - Myola
We Can Service Your NEW Car AND Protect YOUR Warranty
Major Trip Prep - Suspension Upgrades - Bullbars - Accessories

PENRITE **Flash Lube** **AIRBAG MAN** **IRONMAN 4x4** **Dobinsons 4x4** **TRAIN TAMER 4WD**

ARC-AU21881 crookhavenmechanical.com.au MVRLic35947

Route

120



Currarong, Callala Bay, Callala Beach, Myola to Nowra and Bomaderry

Departs	School Days		Monday to Friday		Saturday and School Holidays		PM
	AM	AM	AM	PM	AM	AM	
Currarong	♂		♂	♂	♂	♂	♂
Crookhaven Pde	N/A	7.15 T	8.25 T		8.00		
Yalwal St	N/A	7.16 T	8.26 T		8.01		
Tennis Court	N/A	7.17 T	8.27 T		8.02		
Progress Hall	N/A	7.18 T	8.28 T		8.03		
Cambe & Nowra Rds	N/A	7.20 T	8.30 T		8.05		
Callala Bay							
Sydney Ave	6.04	7.35 T	8.47	10.10	8.20	10.10	1.45
Boorawine Terrace	N/A	7.30 T	8.40	10.13	8.23	10.13	1.48
Emmett Street Shops	5.58	7.30 T	8.46	10.16	8.26	10.16	1.53
Callala Public School	N/A	7.35 T	8.45	10.17	8.27	10.17	1.54
Lackersteen and Emmett	6.02						
Callala Beach / Myola							
Queen Mary Street	N/A	7.15 T	8.15	10.20	8.31	10.20	1.58
Catherine St Myola	N/A	7.20 T	8.20	N/A	8.36	N/A	N/A
Sir Henry Crescent	N/A	7.22 T	8.23	10.23	8.40	10.23	2.02
Callala Beach Shops	5.51	7.25 T	8.25	10.25	8.42	10.25	2.04
Watts and Lennox St	N/A	7.27 T	8.28	10.28	8.45	10.28	2.07
Mayfield							
Mayfield		7.40 T					
Stewart Place Nowra	6.43	8.20	9.20	11.00 #	9.20	11.00 #	2.55
Bomaderry Rail	6.33	8.15	9.30	11.10 #	9.30	11.10 #	2.40
Nowra Tafe		8.20	9.32				
Stocklands Nowra	N/A		9.40	#	9.40	#	2.50
Train Departs Weekdays	6.43	8.17 & 9.20	10.00*	11.23 & 12.00pm*	10.00*	11.23 & 12.00pm*	16.12
Train Departs Saturdays					10.31	12.29	16.33

* Bus Service 737 Bomaderry Station to Kiama Station
 T Transfer at Shoalhaven High School for Nowra and Bomaderry

Drops only as Required.

SERVICES DO NOT OPERATE SUNDAYS AND PUBLIC HOLIDAYS
 T Transfer at Callala School for Nowra and Bomaderry

Route

120

Nowra and Bomaderry to Callala Beach, Myola, Callala Bay and Currarong



	Monday to Friday		Monday to Friday		School Days		Saturday and School Holidays		PM
	AM	PM	PM	AM	AM	AM	PM	PM	
Train Arrives Weekdays	8.40* & 9.15	11.40* am & 12.2	1.40* & 2.17			8.40* & 9.15	11.40* am & 12.27	1.40* & 2.17	17.10
Train Arrives Saturdays						8.19	12.21	2.19	
Departs	♂	♂	♂			♂	♂	♂	♂
Stewart Place Nowra	9.20	12.20	2.55			9.20	12.20	2.55	5.24
Bomaderry Rail	9.30	12.32	2.40			9.30	12.32	2.40	5.17
Nowra Tafe	9.32	12.34		3.30	S473				
Stocklands Nowra	9.40	12.40	2.50			9.40	12.40	2.50	5.34
Mayfield				3.55					
Callala Bay									
Callala School	10.17		3.35			10.17			#
Sydney Ave	10.10		3.43			10.10			N/A
Boorawine Terrace	10.13		3.40			10.13			#
Emmett Street Shops	10.16		3.35			10.16			
Callala Beach									
Queen Mary Street	10.20		3.46 T			10.20			N/A
Catherine Street Myola	N/A		3.51 T			N/A			N/A
Sir Henry Crescent	10.23		3.55 T			10.23			N/A
Callala Beach Shops	10.25		3.45 T			10.25			#
Watts, Lennox Road Loop	10.28		3.42 T			10.28			N/A
Currarong									
Cambe & Nowra Rds			3.50 T						N/A
Progress Hall			3.53 T						N/A
Tennis Court			3.55 T						N/A
Yalwal St			3.57 T						N/A
Crookhaven Pde			4.00 T						N/A

* Bus Service 737 Kiama Station to Bomaderry Station.

Drops as Required. T Transfer at Callala Bay for Currai S473 Bus for Callala Bay, Callala Beach, Myola and Currarong.

SERVICES DO NOT OPERATE SUNDAYS AND PUBLIC HOLIDAYS.



Callala Bay Pharmacy

2/55 Emmett Street, Callala Bay 2540 Ph: 4446 4251

Hours: Mon-Fri 9am-5.30pm; Sat 9am -12.30pm

Friendly, professional service

- Diabetes Australia supplies • Baby weighing • Gift lines
- Blood pressure monitoring • Medication packing

FREE delivery every Thursday to Callala Bay, Callala Beach and Currarong

Dr John C Wright B.V.Sc.

CULBURRA VETERINARY CLINIC

7 Weston Street, Culburra Beach

9am-11am weekdays

4-6pm Mon, Tue, Thurs

4-5pm Wed, Fri

10am-12pm Sat

CALLALA VETERINARY Consulting Room

22 Emmett Street Callala Bay

1-3pm weekdays by appointment

Please phone: **4447 3851** for appointments, enquiries or after hour calls



E & S Painting Services

- Interior & Exterior Painting
- Friendly Local Service
- Excellent Rates
- Quality Assured

M: 0422 560 696 H: 4446 5056

Graham Worts



Vinnies

CALLALA BAY SHOP

- **High quality second-hand items**
- **Clothing, bric-a-brac, books, linen, beach towels, toys, games, DVDs, jewellery and much more!**

VOLUNTEERS NEEDED

**YOUR TIME IS THE MOST VALUABLE
GIFT YOU CAN GIVE.**

For details of how you can help,
visit www.vinnies.org.au or pop into the shop
for an application pack.

Find us at: **59 Emmett St, Callala Bay**

Opening hours: **Monday to Friday - 8.30am to 4pm,**
Saturdays - 8.30am to 2pm (during summer/peak times only)

**We welcome donations of non-bulky items during opening
hours. For pickups, please call 4421 7244.**

Callala Markets

The Callala Markets, through their stall holders, continues to support the local community.

Every time you purchase from the Callala Markets you not only buy something interesting, well made by our artisan crafters, or tasty fare from the providore stand (best egg and bacon roll ever), a small part of that purchase will eventually make its way back to the local community in the form of a donation for a worthwhile community project.

Here is Sue Greenwood of Culburra Beach View Club (0407 552683) accepting a donation of \$500 from Callala Markets.



Culburra Beach VIEW club donation

This donation will help local school children in our area to receive essential items; either books, bags, drink bottles or whatever it is that they need to continue to stay at school.

Another recent recipient was Russel Green from Marine Rescue Jervis Bay, who accepted a further \$500 donation from the Markets. This donation will go towards the purchase of additional RWC (Rescue Water Craft) - 2 Jet Skis with Trailers – to help with emergency rescues in conjunction with their other boats and personnel.

The next Callala Markets will be on Saturday 14 October 2023, starting at 8am and finishing at 1pm in the grounds of the Callala Bay Community Centre, Emmett St, Callala Bay. This is the “Voice” referendum day, so we’ll be sharing our venue with the Electoral Office staff and voters. We hope for a bumper crowd!

Callala Community Garden will be open in conjunction with the Markets and always has a great selection of organic fresh vegetables.

So come along and enjoy the Markets, chat with the stall holders, and enjoy the lovely spring weather.

We always hope for fine weather, but we’ll be there.....rain, hail or shine.

Want to join us? Contact Sandra on 0413 581419 to book your stall.



2nd Saturday

EACH MONTH

42 EMMETT ST,
CALLALA BAY

8:00AM - 1:00PM





Tennis @ Callala Bay



Fancy a hit?

Located here in Callala Bay, the courts are attached to, and managed by the Callala Bay Progress Hall. They are located at the corner of Wearne and Morton St.

Bring your own rackets and balls!

Ring 444 64 313 to book

Available for casual and regular bookings.

Lessons—call Daisy on 049 053 7551

Culburra Beach & District Garden Club Inc.

Hello everyone,

After the August meeting, eighteen members and friends went to visit the West Nowra Recycling and Waste Depot. We were met by Waste Services Section worker Fiona Schreurs, a guest speaker earlier in the year and the one who organised the visit. We walked first to some of the processing stations situated in sheds with machinery recycling waste such as polystyrene, copper wiring and glass and bailing machines for cardboard. The by-products from this waste are turned into soft rubber that you see under playground equipment, road base, and ceramic tiles. The bus took us round to the land fill area where most of the red bin waste is dumped. Unfortunately, the waste that stands out the most is the soft plastic i.e., bags and this is one of their biggest problems. There were large blue textile bins for clothing, handbags, and shoes. Fiona informed us that recycling rules are changing all the time. It was a very informative visit and lunch at the Shoalhaven Entertainment Centre was great. If you ever get the opportunity to do this tour, you can see for yourself how the Shoalhaven Council is way ahead in trying to turn waste into practical items.

Spring has arrived the garden is coming back to life. All we need now is rain as the soil needs a good soaking. The display table theme for this month was Spring Blooms, and a riot of colour was on show with Cliveas, May Bush, Banksia Rose, Orchids, Pansies, Geraldton Wax, Azaleas, Mint Bush, Lavender, Seaside daisy, Bluebells, Daffodils, Rock Orchids, Babianas, Ixia and Alstroemeria. The Geraldton wax (*Chamelaucium uncinatum*) is

a beautiful flowering Australian native shrub that brings colour to gardens from late winter to spring. As the common name suggests, Geraldton wax comes from Western Australia. It has mainly pink or white flowers with small stiff petals, which give them the description of 'wax' flowers and the green leaves are narrow and almost needle like. There are dwarf forms, which suit containers. The plants suit coastal conditions. In their native home of Western Australia, Geraldton wax grows in well-drained, sandy, or gravelly soil. Good drainage is essential for a long-lived plant. After flowering, lightly prune away spent flowers. These can also be picked as a long-lasting and very pretty, cut flower. An all over clip keeps plants compact and tidy but avoid heavy pruning or cutting into old stems. Geraldton wax plants grow to around 2 to 2.5 metres high and wide and combine well in garden beds with most other natives including shrubs such as Grevilleas, Correa and Westringia, as well as colourful annuals such as paper daisies.



We meet on the 3rd Saturday from Feb. – November 1.30pm at Culburra Anglican Church, Penguin Head Rd, Culburra Beach. Please bring your own cup/ mug for afternoon tea. Membership fee is \$20 annually.

**Cheers to all and happy gardening,
Doris Carpenter 4446 5631**



The Point Gallery Craft

76B Greenwell Point Road Greenwell Point NSW 2540

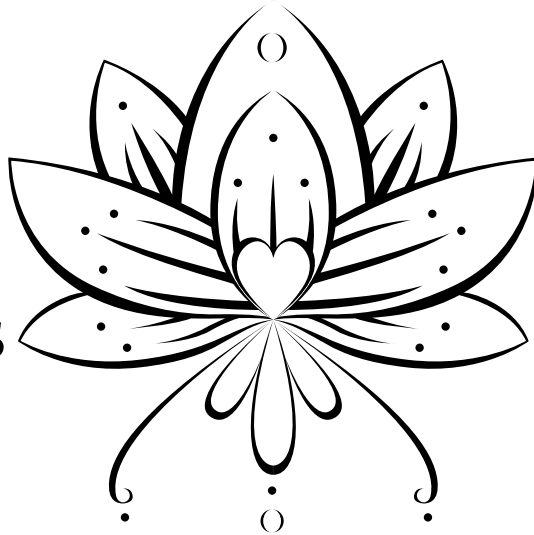
**Extensive Art and Craft Made in the Shoalhaven
Exhibition space available on a calendar month basis
Tourism Ambassador for the Shoalhaven
Normal opening hours 10am-4pm Friday – Monday ur
COVID Hours 11-3 Friday, Saturday & Sunday
For further information**

Contact: 0400998610 or 0418249148

Callala Yoga & Pilates

**CLASSES
ON NOW**

**ALL
AGES/ABILITIES
WELCOME**



**FIND
TIMETABLE
ON OUR
FACEBOOK
PAGE**

FACEBOOK.COM/CALLALAYOGA
PH: 0422433159 INSTA: @CALLALAYOGA



Pottenger & McGhee Solicitors
Nowra

Conveyancing | Wills & Estates | Business Law | Leases

We look forward to meeting you and helping
you with your legal needs.

Level 1, 25 Kinghorne Street, Nowra Phone 02 4421 6166

Email: pbetts@potmac.com.au

If you can't come to us, we can come to you!



Christmas Event

From 12noon to 2:00pm
Saturday 16 December 2023
Callala Community Centre

Market Stalls Santa Claus

Children's Fancy Dress Parade

Salvation Army Band

As in past years, this is an opportunity for you to donate non-perishable food, personal goods, unwrapped gifts for all ages and animal items. These donations will be distributed by the Salvation Army and your generosity will be greatly appreciated by the recipients.

THANK YOU FOR YOUR SUPPORT CALLALA

For more information, please call Sandra on 0439 241 144

Thinking of having a function or meeting . . .



Why not have a look at the Callala Community Centre?

There is table seating for 110 with crockery and cutlery and a modern kitchen.

The centre is airconditioned and has state-of-the art audio visual capability for presentations, training and other entertainment included as part of the hire fee.

Car-parking is adjacent to the Centre and the Callala shops are opposite the Centre.

The Centre has grass surrounds, giving you the option of outdoor training as well as indoor.

If you have an exercise or social group or are looking for a place to hold your next celebration, call Cynthia on **0412 121 737** for enquiries. You can also look for us on **Facebook**

FREE

Pre-Loved Clothing & Book Stall

First Saturday of the Month
at the

Callala Community Centre

9.30am to 12.00 NOON

Clothes in good condition can be dropped off at the stall (on the day only). If clothing can be delivered by 10am; this will allow them to be displayed.

Sponsored by the Anglican Church, Callala

Notes from the Medical Centre

Over the next few weeks, Callala Medical Centre will be asking patients to join MyMedicare which is a new government initiative.

MyMedicare patients will have access to:

- greater continuity of care with their registered practice, improving health outcomes
- longer MBS-funded telephone calls (Levels C and D) with their usual general practice
- triple bulk billing incentive for longer MBS telehealth consultations (Levels C, D and E) for children under 16, pensioners, and concession card holders
- if they live in a residential aged care home, more regular visits from their GP and better care planning, from August 2024
- if they visit hospital frequently, connections to more appropriate care in general practice, from the 2024-25 financial year.

MyMedicare practices will have access to:

- more information about regular patients, making it easier to tailor services to fit the patient's needs.
- the new longer telehealth items linked to MyMedicare outlined above.
- the General Practice in Aged Care Incentive from 1 August 2024, which will support regular health assessments, care plans and regular GP visits for people in residential aged care homes.
- new blended funding payments to support better care in the community for people with complex, chronic disease who frequently attend hospitals. These arrangements will roll out progressively across the country over three years from the 2024-25 financial year.
- Chronic Disease Management items linked to a patient's registration in MyMedicare from November 2024, to support continuity of care for people with chronic and complex conditions. Patients who are not registered in MyMedicare will still be able to receive Chronic Disease Management items from their usual GP.

The process of joining this new government initiative which aims to improve general practice will most likely be done via a Hotdoc link. More information will come with time. We appreciate your cooperation in this process.

Be happy and healthy

Dr Zhou

New Defibrillator at Callala Bay

The Callala Community Centre has recently installed an Automatic External Defibrillator.



Neil Watson, President of the CDCHS and James Morris, President of the Callala Community Centre Management Committee

The purchase of this lifesaving device was made possible by a donation from the Culburra District Community Health Service (CDCHS). The CDCHS is funded through profits from the opportunity shop at Culburra and provide the local community transport to those with hospital or medical appointments in the Culburra / Callala area.

President Neil said the CDCHS is always looking for drivers.

For more information contact Neil on 4444 713

Phone number missing 1 digit

The Anglican Parish of Culburra Beach

Anglicare Op Shop

Shop 3/4 Weston Street, Culburra Beach

Opening Hours:

Mon-Fri 9am - 4pm

Sat. 9am-12pm

** Closed Public Holidays*

Clothing, bric-a-brac, books, toys, linen, games, DVD'S, jewellery and more.

EFTPOS available

Saleable Goods are most welcome, but we can't accept furniture, white goods, mattresses, encyclopedias, computer ware and videos.



You can drop goods at shop or in charity bin situated at Culburra Anglican Church, Penguin Head Rd, Culburra.

If you would like to volunteer, please contact
Manager Neroli McCusker:
4447 4084 (Shop) or 0401 466 590



WELCOME to the Callala Community Centre, conveniently located opposite the shops in Emmett St, Callala Bay.

We are one part of the Shoalhaven Community Information Network (SCIN). Our technology has been upgraded to include solar panels, a storage battery, and satellite communications to provide an independent, continuous, communication solution with the Nowra Emergency Centre.

The information can be seen on the screens located at the Centre.

An audio-visual system has been installed in the Centre offering flexible and comprehensive facilities, including;

- blue tooth; computer connectivity; the ability to operate DVDs and CDs and play personal audio-visual files from a USB drive or SD memory card.

If you want to have a wedding; memorial service; business conference; group gathering or family reunions the Callala Community Centre is well worth considering.

Our facilities include

- A well-equipped kitchen; air conditioning; raised stage and off-street parking, and
- Crockery, cutlery and glasses and seating for up to 120 people

For all hiring enquiries contact Cynthia on 0412 121 737
or email cynirwin974@gmail.com

Follow us on Facebook at Callala Community Centre.

Callala Bay Progress Hall and Tennis Court



Looking for a venue with history and charm?

Available for both casual and regular hire

Newly renovated, reasonable rates

Bookings Ph: 444 64 313

75 Boorawine St, Callala Bay

Regular Community Users

Dru Yoga: Monday (2:45pm)
Craft Group: Tuesday (10am)
Folk Dance: Tuesday (2pm)
Subud: Monday and Thursday (7:30pm)
Yoga: Thursday (9:30am)
Advanced Tai Chi: Saturday (8am)

Lyn ph 0419427574
Yvonne ph 444 66 280
Maureen ph 444 66 550

Anna ph 0405 102 234
Jenny ph 04477 43179

Tennis Lessons: Saturday (midday)

Daisy 0490 537 551

<https://callalabayprogresshall.weebly.com/>



COMMUNITY CONTACTS

Emergency Police Fire Ambulance: 000

Nowra Police Local Area

Command: **4421 9699**

Crime Stoppers: **1800 333 000**
(anonymous reporting)

Police Assistance Line: **131 444**
(non emergencies)

State Emergency Service: **132 500**

Jervis Bay Marine Park: **4441 7752**

Callala Doctor's Surgery: **4446 5350**

Shoalhaven City Council

General enquiries, business hours: **4429 3111**

Emergencies and after hours: **4421 3100**

Justices of the Peace

Howard Duncan: **4446 6535**

Robyn Hannan: **4446 4428**

Jill Lower: **4446 6281 - 0418 186 231**

Dallas McMaugh: **0400 189 875**

Lorraine Taylor: **4446 5117**

Culburra Beach & District Garden Club

We meet every 3rd Saturday of month
Feb-Nov at 1.30pm

Venue: Culburra Anglican Church
Penguin Head Rd, Culburra Beach.

For more details contact

Doris Carpenter: **4446 5631**

Culburra & Districts Community Health Service

Visit the Op Shop and pick up a bargain!
Proceeds help maintain the Medical Bus that transfers people to Nowra for medical appointments from Greenwell Point, Culburra Beach, Callala Bay & Beach, Currarong and Myola.

Please contact Culburra Pharmacy on **4447 2382** to arrange transport.

Culburra Beach & Districts Men's Shed

Every Monday and Wednesday from 9am to 1pm, beside the Banksia Community Hall, Fred Evans Lane, Culburra Beach (IRT entry).

More details contact Ray Sutton:
0499 452 095

Culburra Beach Orient Point Men's Shed Inc.

Location: Old Scout Hall Cnr West Crest & Wollumboola Lane

Open 8:30am - 1pm Tuesday,
Wednesday & Thursday

All enquiries:

John Castellan: **0498 023 781**

Max Ford: **0403 204 847**

Callala Community Garden

52 Emmett Street Callala Bay
Opposite The Shops

Victoria Maudson: **0424 590 105**

email: callalacommunitygarden@gmail.com

 /groups/CallalaCommunityGarden

Drop In's welcome

DISCLAIMER

The Publisher, known as Callala Bay Community Association Incorporated, does not accept any responsibility or liability in any way whatsoever with regard to any of the paying advertisers contained in this newsletter. Additionally the views and comments of all reports submitted are the responsibility of the person/organisations submitting same, including those from SCC (Shoalhaven City Council), which are usually copied verbatim from correspondence and are included for your information. The reports do not necessarily reflect the views of the Publisher.

Truck & Forklift Driving School

Desire Bhugon

RMS Approved: LR, MR, HR, HC (Auto
and Manual)

OLDER DRIVER ASSESSOR



Tel: 02 444 66861 Mobile: 0418 654 572 Email: desdschool@bigpond.com

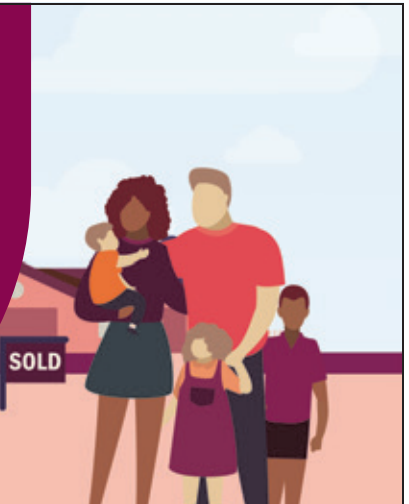
Same house, fresh start

First home, second home, refinancing or renovating, you'll get everything you need and more with a Bendigo Complete home loan.

Come home to a low rate loan.

Chat to a home loan specialist today or search Bendigo Bank Home Loans.

 Community Bank · Nowra & District 02 4422 7574



 **Bendigo Bank**

Terms and conditions, fees, charges and lending criteria apply. All information including interest rate is subject to change without notice. Full details available on application. Credit provided by Bendigo and Adelaide Bank Limited ABN 11 068 049 178 Australian Credit Licence 237879. (1676246-1704263) OUT_13120216 , 10/03/2022



Vanessa Middleton
Licenced Real Estate Agent
0492 945 367
vanessa.middleton@ljhooker.com.au
nowra.ljhooker.com.au

 **LJ Hooker**

Vanessa is a well known face in our community, a **local of Callala for 28 years** and working locally in real estate for the past **17 years** with extensive knowledge and insight into the local market. Her dedication to customer service, innovation, honesty and openness have been the cornerstones of Vanessa's record of success over many years. Known for her friendliness, understanding, enthusiasm & strong negotiation skills.

A consistent number of repeat referrals is a testament to her expertise.

If you are looking for a local in real estate for buying or selling contact me today.

Happier, healthier pets

South Coast Veterinary Services is your local, independent and exclusive veterinary care provider.

Our complete range of in-home and mobile pet services take the stress out of trips to the vet ... for happier, healthier pets.



SCVS

South Coast
Veterinary
Services

Book a visit, manage prescriptions and pay online. Get in touch for more details.

Dr. Glynis Kuipers

0412 319 110

office@southcoastvet.com.au

www.southcoastvet.com.au