

Callala Bay NEWS

April 2023

Issue 114-2023

Monthly Magazine from the Callala Bay Community Association Incorporated




ANZAC
= DAY =

LEST WE FORGET

*The Callala Bay NEWS proudly supports your local community
by helping to fund projects that benefit all residents.*

Consider supporting us by subscribing for a small yearly fee.

Contact: editor.cbcanews@gmail.com



ATB GARDENS YARDS + TREES

All aspects of garden, yard & property maintenance

- Lawn Mowing • Irrigation • Fertilising • Aerating
- Tree Work • Landscaping • Hedging • Mulching
- Rubbish Removal • Domestic & Holiday Rental Cleaning
- High Pressure Water Cleaning • Garden & Yard Make Overs



• Commercial • Domestic • Rural Properties

0415 732 801

ABN: 16 821 580 073

andrew@atbcontractors.com.au | www.atbcontractors.com.au



Enrolment for children 2 to 5 yrs
 Open 8am – 4.30pm
 University & TAFE trained teachers
 ‘School Readiness’ curriculum
 Fee rebates available to eligible families

Awarded ‘Exceeding National Quality Standards’ by the NSW Department of Education and Communities.

For further information please call us on **4446 6089**



first national
REAL ESTATE

Callala

4446 4313



Callala First National has been servicing the local area for more than 19 years and continues to strive to provide a service above and beyond our clients expectations. If you are considering selling or renting your property contact our friendly team on 4446 4313 or drop into our office at 58 Boorawine Terrace, Callala Bay.
www.callalafirstnational.com.au

CALLALA BAY NEWS

*A monthly newsletter of the
Callala Bay Community Association Inc.*

ABN: 68 031 980 561

www.callalabaycommunityassociation.com

Email: admin@callalabaycommunityassociation.com

PO Box 14 Callala Bay 2540

President

Anna Gardner

Vice President

John Fowler

Secretary

Melissa Saunders

Treasurer

Kate Chapman

Minutes Secretary

Jacinta Flattery-O'Brien

COMMITTEE MEMBERS

Merry Dickins

Morris Dickins

James Morris

Public Officer/CB News Editor

Gary Chapman

INDEX

Culburra Beach & Districts Men's Shed	Pages 4-5
Bushcare	Page 6
From the President.....	Page 8
Emergency Contacts.....	Page 12
Bus Timetable	Pages 16-17
Notes from the Medical Centre	Page 22
Callala Community Garden ...	Pages 24-25
Culburra Beach & District Garden Club.....	Page 28
Community Contacts.....	Page 34

Note from the Editor:

The CBnews proudly supports our community, consider subscribing for a small yearly fee.

Please contact us with any local issues or concerns with the intention of having it published.



Callala Gallery

15 Callala Beach Road, Callala Beach

Artworks by **Local Artist Roslyn Chatham** in Oil, Acrylic, Watercolour, Pastel, Mosaic, Mixed Media, Resin Work.

Landscapes, Seascapes, Local Scenes, Fantasy Art, Portraits, Commissions.

Open by Appointment Only

Phone: 44465770. Mobile : 0407465770

Email : Roslyn.chatham@bigpond.com

Callala Gallery on Facebook



Scott Horsburgh

Ph: 4446 6544

18/55 Emmett Street
Callala Bay 2540

**Your Local Butcher
The Meat Specialist**



USE, LEARN & SHARE SKILLS



CULBURRA BEACH & DISTRICTS MEN'S SHED



CALL US ON
0499 452 095

Culburra Beach & Districts Men's Shed

It's been a busy few weeks lately at the shed with quite a few significant improvements internally to the workshop environment.

Our lighting levels and electrical reticulation have been upgraded, thanks to a NSW Government grant, as reported last month. These improvements, secured by our local Member, Shelley Hancock, make a significant contribution to the ambience and safety of the Shed for all members and visitors.

In other changes, we have upgraded our storage facilities for flammable materials through the acquisition of steel cabinets. Our solvents, paints, lacquers, oils and varnishes are now safely housed, with minimal dispersal of volatile odours and improved fire safety. At the same time, we have carried out a major clean-out of surplus materials and rubbish to reduce clutter throughout the Shed. Of course, this is an ongoing challenge, competing with the natural "just in case" thinking of most of the guys.

We've also re-arranged the Shed layout to provide a few extra work benches for new members. There are still shared work areas for machinery and equipment, but each individual can now enjoy their own personal work space.

Finally, the Shed is now on-line! Thanks to a grant last year from the Australian Men's Sheds Association (AMSA), we now have internet access in the office, email connectivity, and wireless capacity throughout the Shed for all members. This takes a load off our Committee members who hitherto carried out their roles from home.

We reported last month about the importance of product sales to provide cash flow for the purchase of raw materials and tools, plus ongoing operational expenses. The March Callala Markets sales were excellent and we look forward to even better results at Callala on Easter Saturday 8 April.

Our native bee and insect hotels continue to garner great support, both from keen gardeners and those wishing to provide habitat for native insects. Our cheese, charcuterie and cutting boards in Australian native hardwoods are also proving very popular.



Cheese or Charcuterie Boards



Large bee/insect hotel

We'll also be at the new Culburra Beach Markets on Sunday 2 April at the Community Hall behind the War Memorial. It is expected that these markets will now operate continuously, on the first Sunday of each month, and we're pleased to be part of their re-emergence.

Come and visit us at the Callala or Culburra Beach Markets to check out our full range of nest boxes and other timber craft. Or just call in for a chat and see what the Shed can offer you.

Follow us on Facebook, or join our Facebook group, to stay up to date on products, events and other items of interest. Contact us through Facebook or via email to CBDMs1@outlook.com or phone us on 0499 452 095

JERVIS BAY FILM TRANSFERS

Records



Cassettes



Onto
CDs



VHS movies



onto DVDs

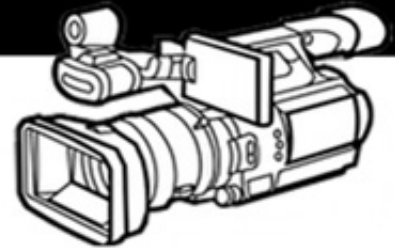


8mm Films onto USBs
Convert CDs to Mp3s
Scan Slides onto USBs

Call: 0401076338

jervisbayfilmtransfers.com.au

Wedding Videographer



**We Build
Corporate
Websites**

YOUR AD HERE

Advertise Your Business With The **CBnews** Today!

Very Affordable Rates For All Businesses!

Contact the Editor for more info

editor.cbcanews@gmail.com

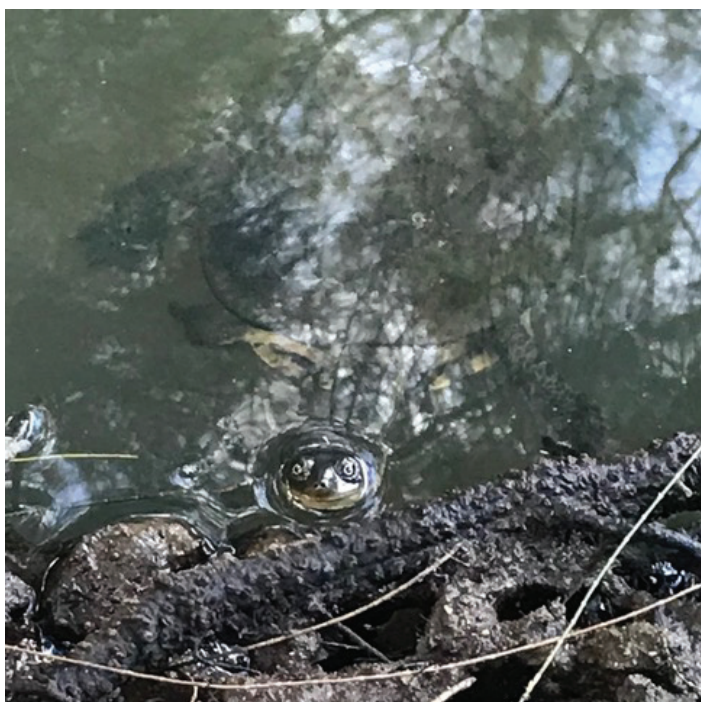
The Callala Bay News Publication is proudly funded by the Callala Bay Community Association with the help of our local business sponsors

Bushcare

Areas worked by Callala Bush Care over the past month:

Callala Creek Boardwalk - we've worked around the start of the boardwalk and Council Bush Regeneration staff have helped out by cutting back rushes which were hanging over/growing over the boards and impeding safe walking.

Lackersteen St site both removing invasive Buffalo Grass and the seemingly never-ending task of digging out Veldt Panic Grass. I have to say, even though I do Bush Care for my own satisfaction, the bonus when working around the Lackersteen St site is the encouragement offered by local residents. Now while it's gratifying to be thanked by people, recently I had the wonderful experience of feeling I was being thanked by a reptile! It was late one afternoon and I was digging out weeds along the steep bank along the storm water drain near the STOP sign. I became aware of being watched. When I raised my head I was delighted to see a Long Necked Turtle paddling towards me, its eyes focused on mine. The turtle came as close as it could to me and stayed there while I finished my work, and then when I moved to the other side of the drain, the turtle swam over there and stayed close to me. I'd love to know why the turtle was so curious about me. Oh, and to me, it's a Long Necked Tortoise, but apparently scientifically, they're now classed as Turtles. You can decide whether you think it's a turtle or tortoise, see photo below.



Boorawine Creek Reserve, tackling what are classed as 'secondary weeds' like paspalum, Paddy's Lucerne, Parramatta Grass, Pennywort etc plus the Umbrella Sedge mentioned in earlier columns.

Asset Protection Zone tree removal - if your property backs onto Boorawine Creek Reserve - go to the Council website and type 'Bush Fire Mitigation' in the search bar. Follow prompts to see if vegetation near your property is going to be removed. The other thing you can do is look at the trees in the Reserve near your property and the ones with red dots sprayed on them are going to be removed, the ones with red Ts sprayed on them are going to be trimmed. Apparently the Council believe they are obliged to do this work under NSW Bush Fire regulations. The SCC site allows you to question work near your property.

Environmental vandalism - poisoning reported of mature wattles at end of Mitchell Rd and angophora saplings next to the Tree Vandalism site sign.

If you have Senna/Easter Cassia growing in your garden - the yellow flowers are out now and green pods starting to form - please remove this weed. If you need help killing or removing, please phone me and I can assist. The best replacement is our golden flowered national emblem, wattle!

Any queries about information or opinions in this column, my [Diana] phone number is: **0419 531 902**. Our Council contact is Michael Smith, ph **4429 3592** or Michael.Smith@shoalhaven.nsw.gov.au.




ANZAC DAY 25 APRIL 2023

The Callala Beach RSL Sub-branch is commemorating ANZAC DAY at Club Callala, Callala Beach Road on Tue 25 Apr 23, commencing at 10:00am. All are welcome to attend, and a snack lunch will be provided after the Ceremony in Club Callala.

Please note: if you are planning to attend, please be seated no later than 9:45am.



Website Design • Graphic Design
Printing • Logo Design

 **0414 785 776**

 **info@scottmorgan.com.au**

 **scottmorgan.com.au**



Callala Bay
Open 7 Days A Week
Market-Fresh Fruit and Vegetables
Lotto Newspaper ATM

Ph: 4446 4811

It Pays to Shop Independent

Located in Bayview Plaza, 55 Emmett Street, Callala Bay

How the locals like it.

From the President

President's Report CBCA Annual General Meeting 8 March 2023

Since the last AGM the CBCA has been active, ably led by our hardworking Executive Committee. We have held 8 General Meetings throughout the year, with the Executive Committee meeting on 9 occasions. Much of our time is spent following up matters with Shoalhaven City Council and keeping the community informed of actions the Council is taking.

At CBCA General Meetings, to which all interested community members are invited, attendees have an opportunity to hear directly from our Ward Councillors - usually an update from Council meetings, and responses to questions previously raised with them by members and the CBCA Executive. In addition, we have structured the meetings to enable questions from the floor to Councillors, who often stay to engage informally over a cuppa. Their commitment to attending when they can is appreciated, as we understand that they have many demands on their time, not the least of which are their 'day jobs'.

At each of our meetings in the past twelve months we have had a guest speaker which gives attendees the opportunity to dig a little deeper into a topic or issue. These have included: a speaker from the Callala Bay Public School who told us about the sensory garden they were planning for the school grounds; different Council officers talking about their areas of responsibility such as pathways, waste management, the Coastal Management Program, potholes and the Community Information Hub, as well as the RFS and others.

In addition, we have participated in joint sessions with the Callala Beach Progress Association covering topics such as the coastal management community feedback session, a Meet the Candidates session in relation to upcoming State Election, a preparatory session with Duntroon representatives about their leadership training program to held in the area this month and last April an afternoon presentation on the Shoalhaven District Memorial Hospital redevelopment. The next planned event is a tour of the new waste facilities at West Nowra on March 16, 2023. There are a few spots left so please let the Secretary know if you wish to be included.

Once again, the CBCA delivered a great Breakfast on the Bay on Australia Day with over 250

attendees, a Citizenship Ceremony, entertainment and a free breakfast supplied by our local RFS. This event could not take place without the hard work of volunteers from the CBCA Executive (led by John Fowler and Jim Townshend) and the RFS, and their friends and relatives! In the lead up to the event, we ran a raffle with amazing support from our local businesses (and individuals) who donated a great selection of prizes. Donors included: Club Callala, Callala Bay Pharmacy, Callala Family Butcher, Callala IGA, Dollarz Value, Ray Plevey and Rhonda Green. Funds raised have helped the RFS and the local soccer club. We also held two sausage sizzles in early January which were a great hit with locals and visitors alike. Thanks to Remos Bakery for the donation of bread and to Scott from our local butcher who provided sausages at a great rate. Many visitors told us that they loved the community spirit which was on show during these events and some even said that this was the kind of community in which they wanted to live.

The Callala Bay Newsletter is one of the main ways we connect with the community, thanks mainly to the advertisers whose purchase of space keep the presses running. Over the year, we have tried to include a wide- variety of subjects, as well as summaries of CBCA meetings and stories on some of our locals. This has been ably coordinated by James Morris who is also chief deliverer of hard copies. James is always looking for 'copy' so in the next 12 months send him your ideas, stories and photos.

I would like to thank the members of the Executive Committee who gave their time, ideas and snacks to keep the CBCA thriving. Thank you to John Fowler, James Morris, Gary Chapman, Jacinta Flattery-O'Brien, Fran Shiel, Chris Byron, Kate Chapman, Mark Bennie and Geoff Carne. Special thanks to our Secretary John Byron who handled all of the paperwork, letters, follow-ups and meeting agendas. His will be hard boots to fill. It has been great working with you all. I have appreciated the support you have provided to me and the dedication you have shown to the tasks you have undertaken.

This is my final Annual Report as President. It has been a privilege to have served in this role over the past few years. I wish my successor all the best for the future. And I encourage everyone in Callala Bay to take an active part in the functioning of the Callala Bay Community Association. It's your Association and it's your community.

Sue Chapman



Having problems with your computer?

Hayton.Biz IT

Local computer support & service.

Onsite IT & computer support for business and home users.

Experienced technicians, same day service, No call out charge for the local area* & competitive rates. Laptop repairs/servicing also undertaken.

- Computer repairs
- General PC report
- Computer servicing
- General PC advice
- Internet problems
- Email setup
- Virus/malware removal
- Network configuration
- Domain registration
- Server installation
- Server support
- Backup configuration

(02) 4423 3857

Call Today



GP JAMES CLEANING SERVICES

The Royal Treatment

Fast Reliable & Trustworthy

*Specialist in Holiday home cleaning

* Linen Hire and Laundry Service

*Domestic and Office Cleans

Bond and Rental Cleans

Fully Insured



0402576859 0244465000 gpjamescleaning@gmail.com

Culburra Beach Orient Point Men's Shed Inc.

The Shed by the Lake

Location: Old Scout Hall Cnr West Crest & Wollumboola Lane

NEW MEMBERS WELCOME

You are invited to join the Longest Established Men's Shed in Culburra, learn new skills and bring your own, come and enjoy the company of our friendly members and participate in a variety of activities

We are open 8:30am - 1pm Tuesday, Wednesday & Thursday

All enquiries:

John Castellan: 0498 023 781

Max Ford: 0403 204 847

Do you know about the Community Information Hub?

Are you a community-based organisation?

Are you planning on holding a community-based event?

Did you know you can advertise your group or event on the Community Information Hub (the Hub) at the Callala Community Centre, for free?

All you have to do is go to the Hub, wait for the appropriate screen and then log in via the QR code. This will connect to the Council Media Group and you can send them your message.

If you want to keep current with what's happening in Callala, what events or activities are being held in the area, as well as current weather and fire ratings specifically for our community, check the Hub – you will be surprised what information is freely available.

Have a look at the Community Information Hub



Medal found



This medal was recently found in the Callala area.

If you are the owner, please call:
0414 652560 to claim possession.



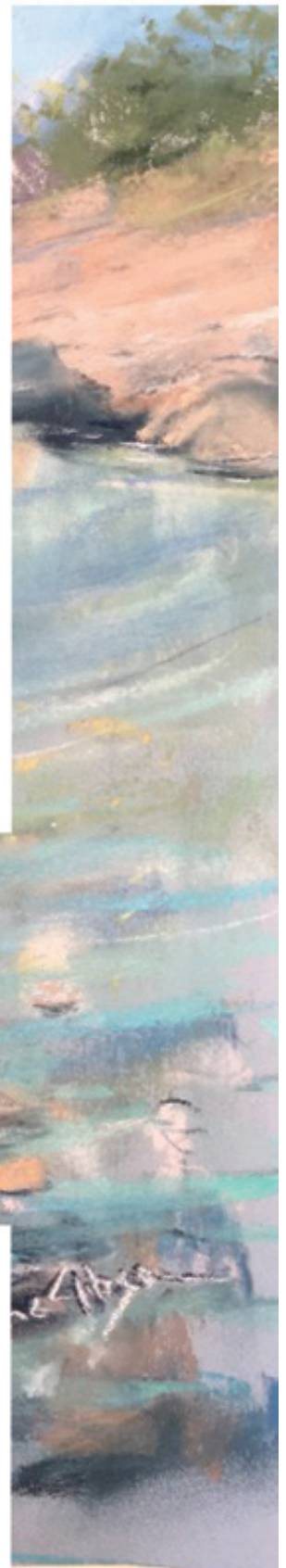
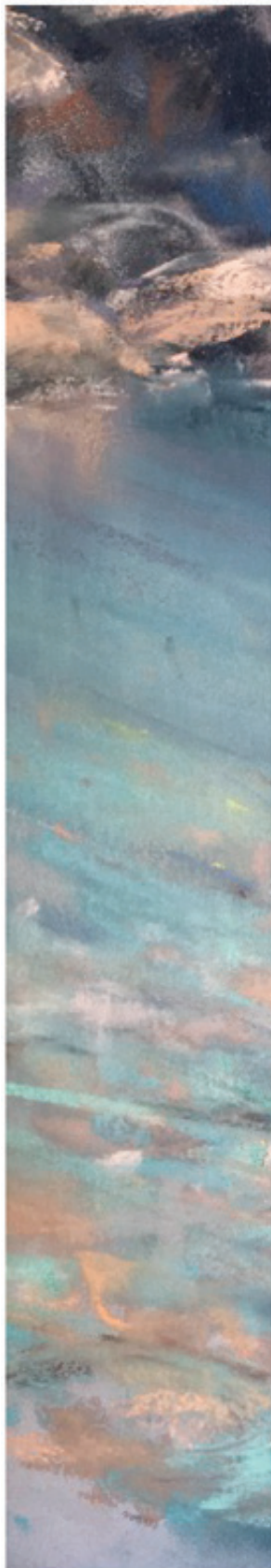


CURRARONG ART TRAIL

FIRST SATURDAY OF EACH MONTH
10AM - 2PM

MEET THE ARTISTS IN THEIR STUDIO AND EXPLORE
WONDERFUL ART PRODUCED IN CURRARONG

BRING YOUR FAMILY AND FRIENDS IT'S FREE



FOR MORE INFORMATION CONTACT
CURRARONGARTTRAIL@GMAIL.COM



CHECK OUR WEBSITE
WWW.CURRARONGARTTRAIL.COM.AU
FOR ART TRAIL MAP, ARTIST
LOCATIONS AND DETAILS

SPONSORS

Shoalhaven
SOUTH COAST - NSW



CURRARONG ARTS & CRAFTS

ClarendonHomes

 CURRARONG | COMMUNITY ASSOCIATION



Claire Graham



Emergency Phone Contacts

Situation/Service	Phone Number	Website
Injury or Health Crisis	000	ambulance.nsw.gov.au
Motor Vehicle Accident	000	police.nsw.gov.au
Police	000	police.nsw.gov.au
Police – Non Emergencies	131 444	police.nsw.gov.au
Police Crime Stoppers	1800 333 000	police.nsw.gov.au
Household Fire / Hazmat	000	fire.nsw.gov.au
Bushfire	000	rfs.nsw.gov.au
Shoalhaven RFS District Office	4424 4424	rfs.nsw.gov.au
Bushfire Survival Plan	-	rfs.nsw.gov.au
Bush Fire Information Line	1800 679 737	-
Flood, Storm and weather warnings	-	bom.nsw.gov.au
Storm / Flood	132 500	ses.nsw.gov.au
Power Outages	131 003	endeavourenergy.com.au
Main Road Closures	132 701	livetraffic.com
Local Road Closures	1300 293 111*	shoalhaven.nsw.gov.au
Shoalhaven City Council	1300 293 111	shoalhaven.nsw.gov.au
Shoalhaven City Council After Hours	4421 3100	shoalhaven.nsw.gov.au
Shoalhaven Hospital	4421 3111	-
Milton Hospital	4455 1333	-

If you are **deaf** or have a **speech** or **hearing impairment** dial **106** for the Text Emergency Relay Service

Useful Apps & Websites

Visitors to the area can download the following free mobile apps to stay informed of the latest advice and information in the event of an emergency.

Emergency+ App

The Emergency+ app is a free app developed by Australia's emergency services, Government and industry partners.

The app uses GPS functionality built into smart phones to help a Triple Zero (000) caller provide critical location details required to mobilise emergency services.



emergencyapp.triplezero.gov.au

Other Helpful Apps & Websites



Fires Near Me NSW



Floods Near Me



Weather Zone



COVID Safe



BOM



Marine Rescue



Live Traffic



Facebook



Twitter



DISASTER DASHBOARDS

shoalhaven.disasterdashboards.com/get-ready/overview



Your new CBCA Committee

At the Annual General Meeting held on Wed 8 Mar 23,
a new Committee was elected and comprises:

Chair	Annan Gardner
Secretary	Melissa Saunders
Vice Chair	John Fowler
Treasurer	Kate Chapman
Minute Secretary	Jacinta Flattery-O'Brien
Committee Members	Merry Dickins Morris Dickins Gary Chapman
Public Officer & CB News	James Morris

Thanks to the outgoing Committee for their diligence and hard work over the past two years.

ANGLICAN CHURCHES

of Culburra Beach | Callala | Currarong

Callala Church Service - 5pm Sunday

All Welcome | 4:30pm Afternoon Tea | Kids Church

St Marks, 2 Hunter Street, CALLALA BAY

Caterpillar's Playgroup - 9:30am Friday @ Culburra Beach Anglican

Kids Club - Friday Afternoon @ Callala Bay Anglican

289 Youth Group - Friday Evening @ Callala Bay Anglican

For more information: Rev. Paul McPhail
m: 0414 616 860 e: culburra.anglican@gmail.com
www.culburraanglican.org.au

Peter Rose EyeQ Optometrists

Visit eyeq.com.au for convenient online bookings

59 Kinghorne Street, Nowra
4421 4511



Peter Rose



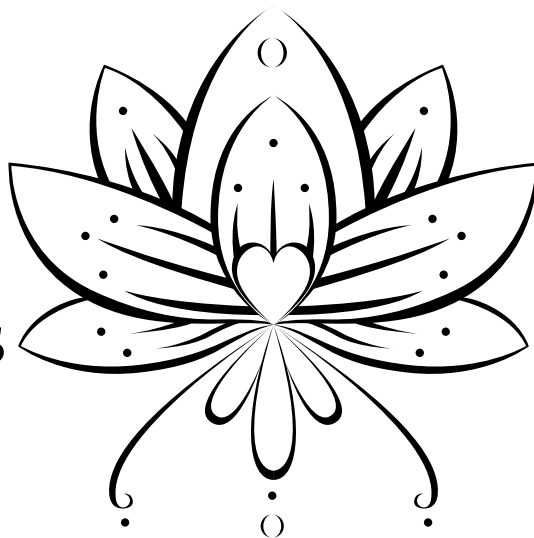
Robert Rose

EyeQ
OPTOMETRISTS
your local
experts in eyecare

Callala Yoga & Pilates

**CLASSES
ON NOW**

**ALL
AGES/ABILITIES
WELCOME**



**FIND
TIMETABLE
ON OUR
FACEBOOK
PAGE**

FACEBOOK.COM/CALLALAYOGA
PH: 0422433159 INSTA: @CALLALAYOGA



Pottenger & McGhee Solicitors
Nowra

Conveyancing | Wills & Estates | Business Law | Leases

We look forward to meeting you and helping
you with your legal needs.

Level 1, 25 Kinghorne Street, Nowra Phone 02 4421 6166

Email: pbetts@potmac.com.au

If you can't come to us, we can come to you!



*Where the
Beach & Bay
come to play!*

GOLF COURSE

Information & bookings
callalagolf@bigpond.com
Open Every day (02) 4446 5313 opt 2
(Check for closures during wet weather)

FRIDAY

Fitness Exercise
Class from 10:30am



\$14 Lunches Monday to Friday.

TUESDAY

\$23 RUMP Night (Dine-in only).

WEDNESDAY

\$18 Chicken Schnitty Night (Dine-in only).

THURSDAY

\$20 Pizza Deal (Dine-in only).

RAFFLES

THURSDAY

Bowlers Extensive Raffle from 6pm.
Members Badge Draw!

FRIDAY

Meat Mart - Best value Friday night in town - Meat Trays & vouchers valued @ over \$1,000 – Tickets on sale 6pm
Draw commences approx 7pm.

SATURDAY

LIVE MUSIC EVERY WEEK!

Fisho's Raffle from 12 noon to 1:30pm

SUNDAY

Meat & Seafood Raffle - Tickets 4pm - Drawn 5pm
Members Badge Draw!
Fisho's Weigh In – 2pm 4th Sunday each month.

BEACH & BAY
STAY CALLALA

MOTEL NOW OPEN!

ENQUIRE AT:

accommodation@clubcallala.com.au

MONDAY - Close @ 7pm.

TUESDAY

MEMBERS Happy Hour 4 - 6pm.

Free Trivia – 6:30pm Start.

WEDNESDAY

NPL Poker – \$12 Entry -

Includes 2 Lifelines - 7pm start.

All games are sit & go – 10 per sit & go.

THURSDAY

Bingo – Eyes down at 11am

LAST SATURDAY EACH MONTH

Mega Meat Raffle + 2nd Chance Draw =

5 x \$100 in points to be won +

BONUS MEMBERS BADGE DRAW!

BOWLS

Monday- Indoor 12 noon.

Wednesday – Callala Mixed Social Bowls.

Names in by 12:30pm for 1pm start.

Every day – Barefoot Bowls

\$10 per person – Everything supplied.

Kids 12 & under play for free.



Phone: 02 4446 5313

43 Callala Beach Road, Callala Beach

Courtesy Bus available 7 days – call Club to book.

www.clubcallala.com.au



Nowra Dance for Cancer held at Callala Bay

David Ellerington is one of the dancers chosen to take part in the Stars of Nowra Dance for Cancer 2023. Twelve local people were chosen and partnered with twelve 12 professional dancers and a live performance will take place at the Shoalhaven Entertainment Centre on 27 May 23 in front of more than 500 people which was a sell-out in 15 minutes of presale.

David's aim is to raise \$10,000 for the NSW Cancer Council. He also advised "All proceeds from my fund-raising go to the local community to help local cancer patients to attend and receive treatment."

David's first fundraiser was held on Sat, 18 Mar 23 and was a Spanish Paella evening at the Callala Community Centre.

Seventy people attended this family event, priced at \$40 per adult and \$20 per child with food and drink supplied. David used local and national connections for prizes for the evening and a major prize was donated by Jayco Corporation from Melbourne.

The night was a great success and many of those attending asked David if he would hold similar events in the future.

The Spanish Paella evening raised \$3150 towards the target of \$10,000 – a really great effort.





WELCOME to the Callala Community Centre, conveniently located opposite the shops in Emmett St, Callala Bay.

We are one part of the Shoalhaven Community Information Network (SCIN). Our technology has been upgraded to include solar panels, a storage battery, and satellite communications to provide an independent, continuous, communication solution with the Nowra Emergency Centre.

The information can be seen on the screens located at the Centre.

An audio-visual system has been installed in the Centre offering flexible and comprehensive facilities, including;

- **blue tooth; computer connectivity; the ability to operate DVDs and CDs and play personal audio-visual files from a USB drive or SD memory card.**

If you want to have a wedding; memorial service; business conference; group gathering or family reunions the Callala Community Centre is well worth considering.

Our facilities include

- **A well-equipped kitchen; air conditioning; raised stage and off-street parking, and**
- **Crockery, cutlery and glasses and seating for up to 120 people**

**For all hiring enquiries contact Cynthia on 0412 121 737
or email cynirwin974@gmail.com**

Follow us on Facebook at Callala Community Centre.

Route

120



Currarong, Callala Bay, Callala Beach, Myola to Nowra and Bomaderry

Departs	School Days		Monday to Friday		Saturday and School Holidays		PM
	AM	AM	AM	PM	AM	AM	
Currarong	♂		♂	♂	♂	♂	♂
Crookhaven Pde	N/A	7.15 T	8.25 T		8.00		
Yalwal St	N/A	7.16 T	8.26 T		8.01		
Tennis Court	N/A	7.17 T	8.27 T		8.02		
Progress Hall	N/A	7.18 T	8.28 T		8.03		
Cambe & Nowra Rds	N/A	7.20 T	8.30 T		8.05		
Callala Bay							
Sydney Ave	6.04	7.35 T	8.47	10.10	8.20	10.10	1.45
Boorawine Terrace	N/A	7.30 T	8.40	10.13	8.23	10.13	1.48
Emmett Street Shops	5.58	7.30 T	8.46	10.16	8.26	10.16	1.53
Callala Public School	N/A	7.35 T	8.45	10.17	8.27	10.17	1.54
Lackersteen and Emmett	6.02						
Callala Beach / Myola							
Queen Mary Street	N/A	7.15 T	8.15	10.20	8.31	10.20	1.58
Catherine St Myola	N/A	7.20 T	8.20	N/A	8.36	N/A	N/A
Sir Henry Crescent	N/A	7.22 T	8.23	10.23	8.40	10.23	2.02
Callala Beach Shops	5.51	7.25 T	8.25	10.25	8.42	10.25	2.04
Watts and Lennox St	N/A	7.27 T	8.28	10.28	8.45	10.28	2.07
Mayfield							
Mayfield		7.40 T					
Stewart Place Nowra	6.43	8.20	9.20	11.00 #	9.20	11.00 #	2.55
Bomaderry Rail	6.33	8.15	9.30	11.10 #	9.30	11.10 #	2.40
Nowra Tafe		8.20	9.32				
Stocklands Nowra	N/A		9.40	#	9.40	#	2.50
Train Departs Weekdays	6.43	8.17 & 9.20	10.00*	11.23 & 12.00pm*	10.00*	11.23 & 12.00pm*	16.12
Train Departs Saturdays					10.31	12.29	16.33

* Bus Service 737 Bomaderry Station to Kiama Station

T Transfer at Shoalhaven High School for Nowra and Bomaderry

Drops only as Required.

SERVICES DO NOT OPERATE SUNDAYS AND PUBLIC HOLIDAYS

T Transfer at Callala School for Nowra and Bomaderry

Route

120

Nowra and Bomaderry to Callala Beach, Myola, Callala Bay and Currarong



	Monday to Friday		Monday to Friday		School Days		Saturday and School Holidays		PM
	AM	PM	PM	AM	AM	PM	AM	PM	
Train Arrives Weekdays	8.40* & 9.15	11.40* am & 12.2	1.40* & 2.17				8.40* & 9.15	11.40* am & 12.27	1.40* & 2.17
Train Arrives Saturdays							8.19	12.21	2.19
Departs	♂	♂	♂				♂	♂	♂
Stewart Place Nowra	9.20	12.20	2.55				9.20	12.20	2.55
Bomaderry Rail	9.30	12.32	2.40				9.30	12.32	2.40
Nowra Tafe	9.32	12.34		3.30	S473				
Stocklands Nowra	9.40	12.40	2.50				9.40	12.40	2.50
Mayfield				3.55					5.34
Callala Bay									
Callala School	10.17		3.35				10.17		
Sydney Ave	10.10		3.43				10.10		#
Boorawine Terrace	10.13		3.40				10.13		N/A
Emmett Street Shops	10.16		3.35				10.16		#
Callala Beach									
Queen Mary Street	10.20		3.46 T				10.20		N/A
Catherine Street Myola	N/A		3.51 T				N/A		N/A
Sir Henry Crescent	10.23		3.55 T				10.23		N/A
Callala Beach Shops	10.25		3.45 T				10.25		#
Watts, Lennox Road Loop	10.28		3.42 T				10.28		N/A
Currarong									
Cambe & Nowra Rds			3.50 T						N/A
Progress Hall			3.53 T						N/A
Tennis Court			3.55 T						N/A
Yalwal St			3.57 T						N/A
Crookhaven Pde			4.00 T						N/A

* Bus Service 737 Kiama Station to Bomaderry Station.

T Transfer at Callala Bay for Callala Beach, Myola and Currarong.

Drops as Required.

T Transfer at Callala Bay for Currai S473 Bus for Callala Bay, Callala Beach, Myola and Currarong.

SERVICES DO NOT OPERATE SUNDAYS AND PUBLIC HOLIDAYS.



Callala Bay Pharmacy

2/55 Emmett Street, Callala Bay 2540 Ph: 4446 4251

Hours: Mon-Fri 9am-5.30pm; Sat 9am -12.30pm

Friendly, professional service

- Diabetes Australia supplies • Baby weighing • Gift lines
- Blood pressure monitoring • Medication packing

FREE delivery every Thursday to Callala Bay, Callala Beach and Currarong

Dr John C Wright B.V.Sc.

CULBURRA VETERINARY CLINIC

7 Weston Street, Culburra Beach

9am-11am weekdays

4-6pm Mon, Tue, Thurs

4-5pm Wed, Fri

10am-12pm Sat

CALLALA VETERINARY Consulting Room

22 Emmett Street Callala Bay

1-3pm weekdays by appointment

Please phone: **4447 3851** for appointments, enquiries or after hour calls



E & S Painting Services

- Interior & Exterior Painting
- Friendly Local Service
- Excellent Rates
- Quality Assured

M: 0422 560 696 H: 4446 5056

Graham Worts

The New South Wales State Election

is to be held on Sat 25 Mar 23.

Did you know Callala Bay and Beach are in the State District of South Coast?

There is a **'Meet the Candidate'** event at the
Callala Beach Progress Hall
on **Monday 20th Feb 23**
Commencing at 7pm

If you have a burning issue or want to find out what a candidate says he/she will do to represent the Callala area, have your questions ready and come to the meeting.



ABN: 40 132 674 769

LEAVES AWAY PTY LTD trading as
**SHOALHAVEN
GUTTER CLEANING**

COMMERICAL & RESIDENTIAL
FULLY TRAINED FULLY INSURED

0490 083 275
reliability, quality, value

shoalhavenguttercleaning@gmail.com



ADVERTISEMENT

On Your Side.

I am your representative in the Australian Parliament. I can help with issues like Medicare, Centrelink, aged care and pensions, the NDIS, Veterans' Affairs and community grants.

I can also arrange special birthday and anniversary messages, and information for pensioners and seniors. You can contact me on 4423 1782.



Fiona Phillips

 **FIONA PHILLIPS MP**
FEDERAL MEMBER FOR GILMORE

Authorised by Fiona Phillips, ALP, 3/59 Junction Street Nowra

☎ (02) 4423 1782
📍 3/59 Junction Street Nowra NSW 2541
📍 1/6-8 Orient Street Batemans Bay NSW 2536

✉ Fiona.Phillips.MP@aph.gov.au
📱 Fiona Phillips MP 📧 @fiboydphillips
🌐 FIONAPHILLIPS.COM.AU

Notes from the Medical Centre

Callala Medical Centre is ready for another round of COVID 19 booster vaccines. As of 13 Mar 23, people over the age of 18 who are able to have another COVID 19 booster vaccine. Children between 5-17 who are of high risk with significant medical illnesses are also eligible for a booster vaccine. However, there is just one small detail to note; it is advisable to wait 6 months from your last booster vaccine or last COVID 19 infection prior to your booster shot.

At Callala Medical Centre, we have considered which one to offer as our booster vaccine and have opted for the Pfizer BA .4-5 as our preferred booster, as it covers the most recent mutations/strains.

Just like previous Pfizer vaccines, there is a minor consideration of increased heart comorbidities especially in those with recent (< 3 months) history of cardiac events. If you have any concerns, please discuss with your regular GP prior to your having a booster vaccine.

We are running a clinic (by appt) every day, if you are interested, so please contact your friendly team at Callala Medical Centre, Cheers to all, Doris Carpenter 44465631.

Be happy and healthy
Dr Zhou

Berry skate park and pump track

Berry's highly anticipated skate park and pump track at Boongaree will be officially launched in April with an opening event.

The new skate park is now open for use, alongside the new cricket nets and netball courts. The pump track will remain closed for the next few weeks until all construction and is complete.



Shoalhaven Mayor Amanda Findley said the Boongaree skate park and pump track have been designed to a technical standard suitable to host competitions and as a training venue for skateboarding and BMX riding.

“With these extreme sports now part of the Olympics, this is a great venue for training future elite athletes,” she said.

“There’s a lot of fine detail that’s gone into designing, planning and building these facilities to make them functional and stunning,” Cr Findley said.

One of these innovations is a new resilient, low maintenance turf that doesn’t require mowing that’s been installed around the pump track that will reduce maintenance costs and keep the area green all year round.

For more information about the project, and to subscribe to receive updates, visit the Boongaree Get Involved website.

<https://getinvolved.shoalhaven.nsw.gov.au/berry-district-park>

YOUR AD HERE

Advertise Your Business With
The **CBnews** Today!

Contact the Editor for more info
editor.cbcanews@gmail.com





Vinnies

CALLALA BAY

SHOP

- **High quality second-hand items**
- **Clothing, bric-a-brac, books, linen, beach towels, toys, games, DVDs, jewellery and much more!**

VOLUNTEERS NEEDED

**YOUR TIME IS THE MOST VALUABLE
GIFT YOU CAN GIVE.**

For details of how you can help,
visit www.vinnies.org.au or pop into the shop
for an application pack.

Find us at: **59 Emmett St, Callala Bay**

Opening hours: **Monday to Friday - 8.30am to 4pm,**
Saturdays - 8.30am to 2pm (during summer/peak times only)

**We welcome donations of non-bulky items during opening
hours. For pickups, please call 4421 7244.**



CALLALA COMMUNITY GARDEN

52 EMMETT STREET CALLALA BAY,
OPPOSITE THE SHOPS.

OPENING:

Tuesday, Thursday & Friday Mornings from
8.30 till lunch time
1st and 3rd Sundays 9am till lunch time
2nd Saturday each month. Produce Stall 8am
until Noon.

**OTHER TIMES IF YOU SEE US IN THE
GARDEN PLEASE DROP BY**

OR

**CHECKOUT CALLALA COMMUNITY
GARDEN FACEBOOK PAGE TO KEEP UP**

OR

callalacommunitygarden@gmail.com

WHATS HAPPENING:

1. Saturday 1st April 2023 - 2pm GENERAL MEETING and Speaker
2. **31st March and 28th April will be our Family Fun Friday Mornings.** Morning Tea will be provided. It's for all the community not just members. Bring the little ones AND the family.
3. **Easter Saturday 8th APRIL 2023 PRODUCE STALL**

Come and meet the team and pick up some VERRRY fresh produce from the garden. We pick it at your request. (Cannot get fresher than that) Local honey, jams, pickles and cakes available also. A selection of potted plants and seedlings, including succulents and bromeliads.

SPECIAL EVENTS

Guest speaker

Topic:- Seed Saving

Talk by horticulturalist Jane Mowbray at our General Meeting on 1st April. 2pm at the Garden (All community Welcome)

**MARCH 2023 NEWSLETTER
52 EMMETT STREET CALLALA BAY,
OPPOSITE THE SHOPS.**

CONTACTS:-

Victoria Maudson: 0424 590 105

Gail Fitzgerald: 0412 930 080

Megan Hodges: 0433 668 453

Robyn Hannan: 0417 259 392

HOT NEWS

Great news from our compost making crew. We are now able to create enough 'aged compost' to keep our garden beds topped up all year round. The adage, 'variety is the spice of life' definitely applies to composting. When we started on our composting journey there was reluctance to use lawn clippings in our compost mix, because of our concern about the risk of weed seeds. However, over this past summer, thanks to two very lawn proud gents, we have been able to use theirs and boost our compost quality and production. Some days the special compost thermometer has displayed the interior of our "Add To" bay at nearly 70C!

We have also been collecting all the waste coffee grounds from Remo's which again has boosted the quality of our compost brew. Our members have twigged that we appreciate their twigs - garden pruning - which can be run through our trusty large mulch machine. They provide a necessary coarser additive to the compost mix. Also, it continues to benefit from the mulched fruit and vegetable waste from the IGA.

Given that it is Autumn now, we have just planted out some cabbage seedlings. A generous layer of compost went into the garden bed before the seedlings were carefully planted. Looking at the little cabbage plants so ready to thrive, surrounded by a rich supply of compost, our regular gardeners were reminded that it takes a community to make a Community Garden!

VISITORS

We enjoyed a really interesting talk from Fiona Schreuss from Shoalhaven City Council on RESOURCE RECOVERY and Recycling and future processing plans for our Waste.

Cauliflower Cabbage and broccoli on their way too

WHAT'S GROWING?

Snow peas and sugar snaps are bursting through



WHAT'S NEW?

A huge thanks to our bed building crew, who constructed a new bed where the Scots team cleared the old one.

HARVEST

Eggplants, radishes, capsicums, chillies and herbs all doing really well.



YOUR AD HERE

Advertise Your Business With
The **CBnews** Today!

Contact the Editor for more info
editor.cbcanews@gmail.com



Callala OOSH By Katie

Callala Before and Afternoon Care for school-aged children by qualified and caring staff.

For information please call Katie-

0419917793 or 0427976669

email: callalaooshbykatie@gmail.com

Crookhaven Mechanical Repairs



4447 5845

FREE Pick - Up Callala - Bay - Beach - Myola

We Can Service Your NEW Car AND Protect YOUR Warranty

Major Trip Prep - Suspension Upgrades - Bullbars - Accessories



ARC-AU21881



MVRLic35947

crookhavenmechanical.com.au

The Point Gallery Craft

76B Greenwell Point Road Greenwell Point NSW 2540

Extensive Art and Craft Made in the Shoalhaven
Exhibition space available on a calendar month basis

Tourism Ambassador for the Shoalhaven

Normal opening hours 10am-4pm Friday - Monday ur

COVID Hours 11-3 Friday, Saturday & Sunday

For further information

Contact: 0400998610 or 0418249148



Thinking of having a function or meeting in . . .



Why not have a look at the Callala Community Centre?

There is table seating for 110 with crockery and cutlery and a modern kitchen.

The centre is airconditioned and has state-of-the art audio visual capability for presentations, training and other entertainment included as part of the hire fee.

Car-parking is adjacent to the Centre and the Callala shops are opposite the Centre.

The Centre has grass surrounds, giving you the option of outdoor training as well as indoor.

If you have an exercise or social group or are looking for a place to hold your next celebration, call Cynthia on **0412 121 737** for enquiries. You can also look for us on **Facebook**

FREE

Pre-Loved Clothing & Book Stall

First Saturday of the Month
at the

Callala Community Centre

9.30am to 12.00 NOON

Clothes in good condition can be dropped off at the stall (on the day only). If clothing can be delivered by 10am; this will allow them to be displayed.

Sponsored by the Anglican Church, Callala

Culburra Beach & District Garden Club Inc.

Hello everyone, We went “green” for our AGM this month. As it occurred the day after St Patrick’s Day, members were asked to wear green, have a display of green foliage and bring in a frog or two. It seems that many love and collect frogs – we had ceramic ones, a lovely jade one ,a garage sale bargain metal frog, fluffy toy ones and even one with wings bought from an op shop. Our treasurer brought in a pot which rested on decorative frog feet. Did you know that frogs represent wealth, abundance, ancient wisdom, rebirth, and good luck?

President Bev welcomed guest speaker Fiona Schreurs from Shoalhaven Council. Fiona has been to our club before, but it is always good to catch up with her. She works in the Waste Services Section and we were interested in asking her if the council was introducing a green bin like other councils have adopted. Fiona said that there will not be another bin and she explained the reasons- it would mean extra trucks on roads, another waste depot would need to be built and in the Shoalhaven area there are 60,000 households from Berry to Ulladulla which is a large undertaking if we were to get this bin. Fiona explained that latest technology has been developed in Poland which is a better option for us and we won’t require the green bin. Fiona also explained what items should be put in the yellow recycling bin and what needs to go in the red bin. Members asked many questions about recycling and Fiona recommended that we do one of the Council run tours at West Nowra Depot. We thanked Fiona for taking the time to visit us again and we may take her up on the visit to the depot.

A part of the meeting we enjoy is Q/A where members bring in a plant that they want identified or it could be a garden problem. One of our visitors brought in the ribbon or tapeworm plant- botanical name Homalocladium Platycladum. I had this plant in the garden, but it just grew too big. It was one of those plants though where people said “what is that ?”

Homalocladium Platycladum or Ribbon/ Tapeworm Bush is an amazing plant nevertheless

as it has no leaves; instead it is made up of stems resembling the shape of ribbon. This plant is from the Soloman islands and it’s an odd member of the rhubarb family. Even though it doesn’t create leaves, it does have tiny white to pink flowers on the edges of these ribbon- like stems. It grows very quickly, likes full sun and can be grown in a pot. It enjoys regular watering and feeding and will grow in ordinary well drained soil.



We meet on the 3rd Saturday from Feb. – November 1.30pm at Culburra Anglican Church, Penguin Head Rd, Culburra Beach. Please bring your own cup/ mug for afternoon tea. Membership fee is \$20 annually. Membership fee is \$20 annually.

**Cheers to all and happy gardening,
Doris Carpenter 4446 5631**



Australian troops returning home from Afghanistan

The Anglican Parish of Culburra Beach

Anglicare Op Shop

Shop 3/4 Weston Street, Culburra Beach

Opening Hours:

Mon-Fri 9am - 4pm

Sat. 9am-12pm

** Closed Public Holidays*

Clothing, bric-a-brac, books, toys, linen, games, DVD'S, jewellery and more.

EFTPOS available

Saleable Goods are most welcome, but we can't accept furniture, white goods, mattresses, encyclopedias, computer ware and videos.



You can drop goods at shop or in charity bin situated at Culburra Anglican Church, Penguin Head Rd, Culburra.

If you would like to volunteer, please contact
Manager Neroli McCusker:
4447 4084 (Shop) or 0401 466 590

Priority Actions for the Callala Bay Community

The CBCA meets regularly with members of the community to discuss issues that are of importance to them. At a meeting held on 8 Mar 23 a final list was developed. As a result, the following are areas of focus for the community on which we would appreciate action. We understand that Shoalhaven City Council has limited resources and we do not expect that all these matters can be addressed immediately. We would however, request that the community's views be considered when SCC develops budgets for or undertakes works in our village. In addition, they should be front of mind for Council officers when preparing works plans.

In priority order, these are the matters of importance as determined by the community:

1. **Sheaffe St path** from Lackersteen St to the beach front. This has been a priority for many years and has been the subject of petitions to Council. The completion of this path, including appropriate parking bays and turning circle, is essential for the safety of locals and visitors alike.
2. **Wowly Creek facilities** – this is a heavily used area which requires permanent toilet facilities to stop people using the surrounding bush; tables and chairs for families who come to the area with children for the day, including a picnic shelter. This has also been raised with Council on many occasions, with SCC recognising the need for a toilet by the provision of a porta-loo in peak season. A porta-loo is not a permanent solution. We recognise Wowly Creek as a significant natural space; an appropriate toilet facility which protects it should be a priority for SCC.
3. **Permanent beach access, including appropriate access for people with mobility issues** – we understand that the Open Coast part of the Coastal Management Program is considering beach access generally, and we have previously put in submissions to that program. We want to remind Council that this remains a very high priority for the community on which little progress has been made over many years. There have been some 'stop gap' measures put in place however in all cases the beach has been eroded and any temporary measures have disappeared.
4. **Foreshore path to be made fully accessible** -the path is a great asset and is heavily used by walkers and cyclists. However it is not an accessible asset in its entire length because the section near the Sailing Club has a long set of stairs. A ramp or similar needs to be available so that users with mobility issues, wheelchairs and mobility scooters do not have to back track to get down to the beach and picnic area or go back and drive to Marine Parade to continue their walk.
5. **Permanent solution to beach erosion**- we understand that there are many interested parties involved in this matter, but it is important that Council advocates strongly for this with the relevant bodies on behalf of our community. Community members are very concerned about the loss of important trees along the foreshore due to constant erosion of the bank. There will be increasing severe weather events and action needs to be taken now to prevent serious loss of foreshore, parks and vegetation.
6. **Stairs to the rock pool at the end of Chapman St** -this is a very popular swimming area as it is a natural rock pool and is protected from swells and winds. The stairs have been unusable for more than a year. They need to be replaced as soon as possible and before a serious accident occurs as people are trying to access it down the face of the cliff. We have included this in our response to the CMP but action is needed now.
7. **Extension of footpath along Emmett St to Callala Beach Rd, and along Callala Beach Rd**- as more families move into the area, children need to have a safe way of walking/riding to school; recreational bike riders need a safe route to ride on as the road is narrow and unsuited for bicycles and we would like to encourage visitors to walk to the shops and Club Callala. Paths are a critical piece of infrastructure in a village like ours.

8. **Improved curb and guttering/drainage in the village**- recent rains have clearly indicated the lack of adequate drainage in parts of our village. Streets have remained waterlogged for months which is not only a problem for parking along those streets, walking and pushing prams etc, the water laying along roads is a breeding ground for mosquitos. We request a review of the worst affected areas in the first instance so that action can be taken in a thoughtful, planned manner to start addressing this issue.
9. **Lighting for Silkwood Walk** – the path between Callala Bay and Benton Sands has no lighting. It is used summer and winter and is particularly problematic when it is dark so early in winter. People who want to exercise or walk their dogs after work in winter or at night in summer need to be able to see where they are going and to avoid hazards. This could be good project for demonstrating the use of solar lighting.
10. **Improvements to public toilet facilities in village centre** – visitors are always surprised at the lack of adequate public toilet facilities near the shopping centre and skate park. We have had numerous reports of people simply going to the toilet behind the Community Centre which is both unhygienic and unreasonable. The Community Garden is also used as a toilet facility. The CBCA has approached the shopping centre managers to improve the toilet facilities there with limited success. If the Council wishes to market the Shoalhaven as a great tourist destination, then fundamental infrastructure like public toilets is essential.
11. **Upgrade of boat ramp** – this has been a longstanding issue and has been raised in many different forums without success. We recognise that there are many departments and agencies involved in the boat ramp development, but we encourage Council to take an active part in advocating for the community while considering its value as a tourist attraction. This also applies to the provision of adequate parking to respond to the potentially increased use of the ramp if it is upgraded. People living in the streets around the entrance to the boat ramp are frequently negatively impacted by boat trailer parking.
12. **Removal of dinghies to enhance park facilities along the foreshore** -the removal of dinghies from the foreshore near the boat ramp, playground and picnic facilities is essential. They are an eyesore, prevent people from using the trees for shade and make it impossible for council staff to maintain the area adequately. They are also a haven for vermin including snakes. No dinghies should be permitted in the area unless they are stored in appropriate facilities such as purpose- built racks or enclosures that do not impinge on the parkland.
- The CBCA will continue to work with the Callala Bay community to ensure their needs are being raised with Shoalhaven City Council. Other matters may be raised over coming years; however, Councillors and Council Officers should take this document as the community's strategic focus. Most items have been raised regularly since the 2013 Callala strategic plan. So, it is time that Council includes these key actions in any of its planning and budget processes.





Callala Bay Progress Hall and Tennis Court



Looking for a venue with history and charm?

Available for both casual and regular hire

Newly renovated, reasonable rates

Bookings Ph: 444 64 313

75 Boorawine St, Callala Bay

Regular Community Users

Dru Yoga: Monday (2:45pm)
Craft Group: Tuesday (10am)
Folk Dance: Tuesday (2pm)
Subud: Monday and Thursday (7:30pm)
Yoga: Thursday (9:30am)
Advanced Tai Chi: Saturday (8am)

Lyn ph 0419427574
Yvonne ph 444 66 280
Maureen ph 444 66 550

Anna ph 0405 102 234
Jenny ph 04477 43179

Tennis Lessons: Saturday (midday)

Daisy 0490 537 551

<https://callalabayprogresshall.weebly.com/>



COMMUNITY CONTACTS

Emergency Police Fire Ambulance: 000

Nowra Police Local Area

Command: **4421 9699**

Crime Stoppers: **1800 333 000**
(anonymous reporting)

Police Assistance Line: **131 444**
(non emergencies)

State Emergency Service: **132 500**

Jervis Bay Marine Park: **4441 7752**

Callala Doctor's Surgery: **4446 5350**

Shoalhaven City Council

General enquiries, business hours: **4429 3111**

Emergencies and after hours: **4421 3100**

Justices of the Peace

Howard Duncan: **4446 6535**

Robyn Hannan: **4446 4428**

Rev Sue Fisher: **0406 815 449**

Jill Lower: **4446 6281**

Dallas McMaugh: **0400 189 875**

Lorraine Taylor: **4446 5117**

Culburra Beach & District Garden Club

We meet every 3rd Saturday of month
Feb-Nov at 1.30pm

Venue: Culburra Anglican Church
Penguin Head Rd, Culburra Beach.

For more details contact

Doris Carpenter: **4446 5631**

Culburra & Districts Community Health Service

Visit the Op Shop and pick up a bargain!
Proceeds help maintain the Medical Bus that transfers people to Nowra for medical appointments from Greenwell Point, Culburra Beach, Callala Bay & Beach, Currarong and Myola.

Please contact Culburra Pharmacy on **4447 2382** to arrange transport.

Culburra Beach & Districts Men's Shed

Every Monday and Wednesday from 9am to 1pm, beside the Banksia Community Hall, Fred Evans Lane, Culburra Beach (IRT entry).

More details contact Ray Sutton:
0499 452 095

Culburra Beach Orient Point Men's Shed Inc.

Location: Old Scout Hall Cnr West Crest & Wollumboola Lane

Open 8:30am - 1pm Tuesday, Wednesday & Thursday

All enquiries:

John Castellan: **0498 023 781**

Max Ford: **0403 204 847**

DISCLAIMER

The Publisher, known as Callala Bay Community Association Incorporated, does not accept any responsibility or liability in any way whatsoever with regard to any of the paying advertisers contained in this newsletter. Additionally the views and comments of all reports submitted are the responsibility of the person/organisations submitting same, including those from SCC (Shoalhaven City Council), which are usually copied verbatim from correspondence and are included for your information. The reports do not necessarily reflect the views of the Publisher.

Truck & Forklift Driving School

Desire Bhugon

RMS Approved: LR, MR, HR, HC (Auto
and Manual)

OLDER DRIVER ASSESSOR



Tel: 02 444 66861 Mobile: 0418 654 572 Email: desdschool@bigpond.com

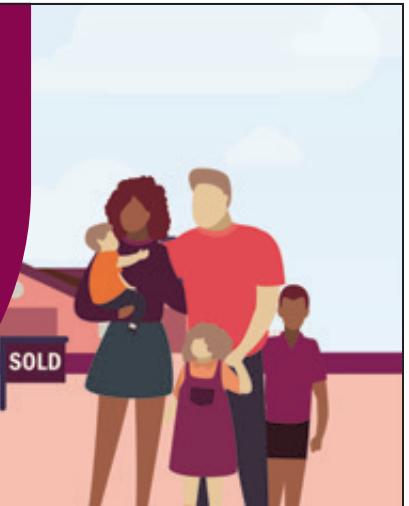
Same house, fresh start

First home, second home, refinancing or renovating, you'll get everything you need and more with a Bendigo Complete home loan.

Come home to a low rate loan.

Chat to a home loan specialist today or search Bendigo Bank Home Loans.

 Community Bank · Nowra & District 02 4422 7574



 **Bendigo Bank**

Terms and conditions, fees, charges and lending criteria apply. All information including interest rate is subject to change without notice. Full details available on application. Credit provided by Bendigo and Adelaide Bank Limited ABN 11 068 049 178 Australian Credit Licence 237879. (1676246-1704263) OUT_13120216 , 10/03/2022



Vanessa Middleton
Licenced Real Estate Agent
0492 945 367
vanessa.middleton@ljhooker.com.au
nowra.ljhooker.com.au

 **LJ Hooker**

Vanessa is a well known face in our community, a **local of Callala for 28 years** and working locally in real estate for the past **17 years** with extensive knowledge and insight into the local market. Her dedication to customer service, innovation, honesty and openness have been the cornerstones of Vanessa's record of success over many years. Known for her friendliness, understanding, enthusiasm & strong negotiation skills.

A consistent number of repeat referrals is a testament to her expertise.

If you are looking for a local in real estate for buying or selling contact me today.

Happier, healthier pets

South Coast Veterinary Services is your local, independent and exclusive veterinary care provider.

Our complete range of in-home and mobile pet services take the stress out of trips to the vet ... for happier, healthier pets.



SCVS

South Coast
Veterinary
Services

Book a visit, manage prescriptions and pay online. Get in touch for more details.

Dr. Glynis Kuipers

0412 319 110

office@southcoastvet.com.au

www.southcoastvet.com.au