

Callala Bay NEWS

December 2024

Issue 134-2024

Monthly Magazine from the Callala Bay Community Association Incorporated

**Merry
Christmas
& HAPPY NEW YEAR!**



*The Callala Bay NEWS proudly supports your local community
by helping to fund projects that benefit all residents.*

Consider supporting us by subscribing for a small yearly fee.

Contact: editor.cbcanews@gmail.com



ATB GARDENS YARDS + TREES

All aspects of garden, yard & property maintenance

- Lawn Mowing • Irrigation • Fertilising • Aerating
- Tree Work • Landscaping • Hedging • Mulching
- Rubbish Removal • Domestic & Holiday Rental Cleaning
- High Pressure Water Cleaning • Garden & Yard Make Overs



• Commercial • Domestic • Rural Properties

0415 732 801

ABN: 16 821 580 073

andrew@atbcontractors.com.au | www.atbcontractors.com.au



Enrolment for children 2 to 5 yrs
Open 8am – 4.30pm
University & TAFE trained teachers
'School Readiness' curriculum
Fee rebates available to eligible families

Awarded 'Exceeding National Quality Standards' by the NSW Department of Education and Communities.

For further information please call us on **4446 6089**



first
national
REAL ESTATE

Callala

4446 4313



Callala First National has been servicing the local area for more than 19 years and continues to strive to provide a service above and beyond our clients expectations. If you are considering selling or renting your property contact our friendly team on 4446 4313 or drop into our office at 58 Boorawine Terrace, Callala Bay.
www.callalafirstnational.com.au

CALLALA BAY NEWS

*A monthly newsletter of the
Callala Bay Community Association Inc.*
ABN: 68 031 980 561
www.callalabaycommunityassociation.com
Email: admin@callalabaycommunityassociation.com
PO Box 14 Callala Bay 2540

CBCA Inc COMMITTEE

President

Morris Dickins

Vice President

Scott Horsburgh

Treasurer

Julie Morris

General Secretary

Jacqueline York

Minutes Secretary

Merry Dickins

COMMITTEE MEMBERS

Jacinta Flattery-O'Brien

Gary Chapman OAM

Sue Chapman

Melinda Listing

Kate Hartnett

Robert Hartnett

Sharron Horsburgh

Public Officer/CB News Editor

James Morris

Note from the Editor:

The CBnews proudly supports our community, consider subscribing for a small yearly fee.

Please contact us with any local issues or concerns with the intention of having it published.

INDEX

Culburra Beach & Districts Men's Shed	Page 4-5
From the Committee	Page 6
Emergency Contacts	Page 12
Callala Community Garden	Pages 14-15
Callala Markets	Page 20
From the Doctor	Page 22
Culburra Beach & District Garden Club	Page 24
Bushcare	Page 35
Community Contacts	Page 42

MR MIKE SPARKLE BRIGHT

ABN: 50 534 685 256

Professional Window Cleaner



All Types of windows cleaned including Fly Screens, Window & Door Frames Tracks and Runners

We can offer our customers Solar Panel Cleaning (*single story only*)

Very Reliable • Free quotes

Ring Mike on:

0406 467 026 or 02 4446 6684



Scott Horsburgh

Ph: 4446 6544

18/55 Emmett Street
Callala Bay 2540

**Your Local Butcher
The Meat Specialist**



USE, LEARN & SHARE SKILLS



CALL US ON
0494 055 329

**CULBURRA BEACH &
DISTRICTS MEN'S SHED**

FIND US BEHIND THE POLICE STATION.

Culburra Beach & Districts Men's Shed

We apologise for not making it to Callala Markets last month. Unfortunately, we were short of staff for the stall due to illness and holiday commitments.

Our "Fix it Monday" program on the first Monday of each month continues to successfully undertake minor repairs and special orders for local residents. Bring in that broken chair or family heirloom and we'll endeavour to bring it back to life. Our welding bay is also available to assist with repairs to metal and steel items.

And we don't just do repairs. We're always open for 'special orders' and recently completed a custom umbrella stand in recycled white mahogany and spotted gum hardwood. It's very rewarding to see these timbers repurposed and brought back to useful life.



Umbrella Stand

We'll be at the Callala Markets on Saturday 14 December, from 8am 'til 1pm for those last-minute Christmas gifts. Come along and check out our range of timber craft and nestboxes for your backyard buddies. Or just call in for a chat and see what the Shed can offer you.

The Shed is open for door sales on Mondays and Wednesdays from 8.30am to 1.00pm, so feel free to call in and peruse our full range of nestboxes and native bee hotels for your backyard buddies. We also carry a wide range of other craft for the home or kitchen, including items too large to transport to the Markets.

Follow us on Facebook or join our Facebook group to stay up to date with news and events. You can contact us through Facebook, via email to CBDMS1@outlook.com or by phone on 0494 055 329.



Tai Chi & Qigong for Health

Callala Beach Community Centre

Tuesdays 11:30am

To Book contact:

Joanne

0416 271 408

- Feel the flow of vitality -

To all our readers and subscribers, we wish you a wonderful Christmas and a rewarding and enjoyable new year



FirstLine Holistic Therapies

At FirstLine Holistic Therapies we specialise in alternative healthcare, using safe and effective natural medicines. We also offer a personalised Lifestyle Medicine Program for heart disease, diabetes, and cancer.

Gastro-Intestinal Health • CardioMetabolic disease
Men & Women's Reproductive Health • Mood disorders
Skin conditions • Fatigue/stress & sleep problems

Serving the Shoalhaven area.

Telehealth appointments also available.

Located at 132 Junction St. Nowra.
(inside Nowra Medical & Skin Centre)

Phone: 0407 489 063

Email: johntylor@multicitymedical.org

Notes from the CBCA Meeting held Wed 13 Nov 24

The meeting discussed:

- Repairs to the stairs to the rock platform at the end of Chapman St and Council's response indicated that Council has obtained some grant funding from the NSW Government Disaster Recovery Program. The engagement process is expected to conclude in November. Full funding for construction delivery is not yet confirmed.
- Repairs are also to be undertaken on stairs to the rock platform opposite 7 Marine Parade and stairs to the foreshore at Callala Creek. Those repairs might be completed by the end of the year.

Working Group Reports:

- Christmas Lunch-
A cold Christmas Lunch will be provided to eligible Callala residents who register their interest at the LPO. Signs advertising the event are displayed in local shops, together with information folders. Support from the Callala Community and businesses has been excellent.
- Breakfast by the Bay Australia Day-
Arrangements regarding catering of food (by RFS) and entertainment have been completed. Final arrangements are to be confirmed with the Council.
- Callala Bay School Art Project:
This will be part of the Community Centre Christmas Event. CBCA will assist the Project with supply of materials (paper etc.) Sandra McKenzie-Clark is the coordinator of the art event, which will be oriented to children. The event will also feature Santa, a school choir and a hot rod display.
- January Sausage Sizzles:
The dais at the shopping centre has been booked for 4, 11 and 18 Jan 25.. Volunteers are needed to help.

- Sheaffe St Path : see separate article
- Proposed Special Rates Variation:
Feedback surveys had been completed where alternative variations of no change, an 8% rise or 12% rise were proposed. The meeting was advised the survey can be done on-line, and it was further suggested that our members be encouraged to participate via Council's "Get Involved" page.
- Wowly Creek:
Council referred to their policy document "Community Infrastructure Strategic Plan" (CISP) and stated that Wowly Creek is identified as a "local level park" and that "provision of amenities within local parks is not recommended under the CISP". The CISP (2018) and a park typology classification called "Local Level Park" does not appear in that document.

Members present at the meeting felt that further clarification should be sought from Council, particularly regarding the classification of typology of Wowly Creek Park and infrastructure allowable in that park.



Callala Gallery

15 Callala Beach Road Callala Beach

Open 10am to 3pm

Week Days & Weekends

Weekly classes in H2O Oils, Acrylics, Watercolours, Pyrography, Mixed Media, Mosaics & Clay Sculpting.

Workshops by appointment.

Artworks for sale by local Artists.

We do take Commissions & have a lay-by agreements.

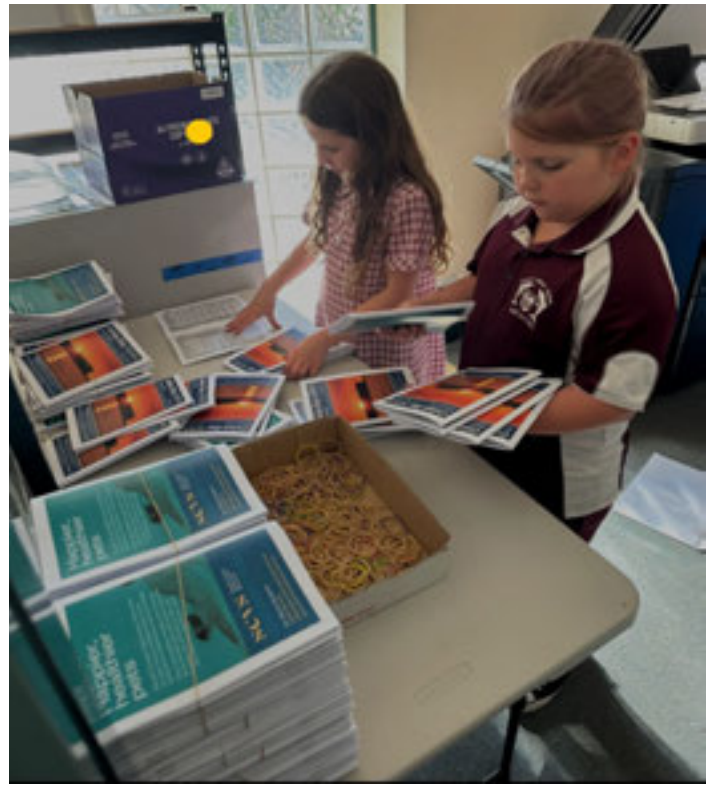
Ph: 4446 5770 Mob: 0407 465 770

www.artclassesnowra.com

Callala Gallery on Facebook

The Newsletter - Did you know?

- The Newsletter content is provided by a large coterie of dedicated community members from the Callala and Culburra areas;
- 460 copies are produced and over 300 are distributed to the Callala shops, Club Callala, Culburra, and Nowra. Copies have been found in far-flung suburbs of Sydney and Canberra;
- Some are delivered to local homes and woe betide if it is not there by month's end;
- The photo below shows some of the 'special workers' from Oosh who (willingly) assemble Newsletters ready for delivery, and finally
- Thank you to the Community for your assistance with this important contribution.



Peter Rose EyeQ Optometrists

Visit eyeq.com.au for convenient online bookings

59 Kinghorne Street, Nowra

4421 4511



Peter Rose



Robert Rose

EyeQ
OPTOMETRISTS
your local
experts in eyecare

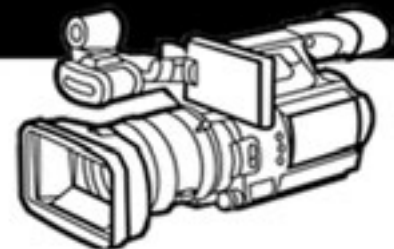
JERVIS BAY FILM TRANSFERS



Call: 0401076338

jervisbayfilmtransfers.com.au

Wedding Videographer



**We Build
Corporate
Websites**

FIONA PHILLIPS MP

Federal Member for Gilmore


I'm here to help with issues like Medicare, Centrelink, aged care and pensions, the NDIS, Veterans' Affairs and community grants. I can also arrange flags, and special birthday and anniversary messages.

Please let me know how I can help you.

 (02) 4423 1782

 Fiona.Phillips.MP@aph.gov.au

 fionaphillips.com.au

 3/59 Junction St Nowra NSW 2541 &
1/6-8 Orient St, Batemans Bay NSW 2536



Authorised by Fiona Phillips MP, Nowra.



ANGLICAN CHURCHES of Culburra Beach | Callala | Currarong

Callala Church Service - 5pm Sunday
All Welcome | 4:30 pm for afternoon tea
St Marks, 2 Hunter Street, Callala Bay



Please contact us for more information or visit our web site.

p: 02 4447 3277

e: office@culburraanglican.asn.au

www.culburraanglican.asn.au

Growth Group Bible Studies
Contact us for times and locations

Caterpillar's Playgroup
9:30am Friday @ Culburra Beach Anglican

289youth
Friday Nights @ Culburra Beach Anglican



Having problems with your computer?

Hayton.Biz IT

Local computer support & service.

Onsite IT & computer support for business and home users.

Experienced technicians, same day service, No call out charge for the local area* & competitive rates. Laptop repairs/servicing also undertaken.

- Computer repairs
- General PC report
- Computer servicing
- General PC advice
- Internet problems
- Email setup
- Virus/malware removal
- Network configuration
- Domain registration
- Server installation
- Server support
- Backup configuration

0422 599 305

Call Today

Culburra Beach Orient Point Men's Shed Inc.

The Shed by the Lake

Location: Old Scout Hall Cnr West Crest & Wollumboola Lane

NEW MEMBERS WELCOME

You are invited to join the Longest Established Men's Shed in Culburra, learn new skills and bring your own, come and enjoy the company of our friendly members and participate in a variety of activities

We are open 8:30am - 12:30pm Tuesday, Wednesday & Thursday

All enquiries: 0498 023 781

www.culburra-beach-mens-shed.org.au

Facebook: Culburra Beach Orient point Men's Shed <https://www.facebook.com/cbopmshed>



CLUB HOURS

Mo: 10AM - 7PM
Tu: 10AM - 9PM
We: 10AM - 10:30
Th: 10AM - 10:30
Fr: 10AM - 10:30
Sa: 10AM - 10:30
Su: 10AM - 9PM

43 Callala Beach Road, Callala Beach
02 4446 5313 clubcallala.com.au
generalmanager@clubcallala.com.au

accommodation now available at:



31 Callala Beach Road, Callala Beach
02 4446 5313 or 0460 543 859
beachandbaystay.com.au



for information & bookings, call us on
02 4446 5313 (option 2) or contact
callalagolf@bigpond.com
open every day pending weather



Lunch Service:
Every Day From
12:00PM - 2:30PM
Dinner Service:
Tuesday to Sunday
5:00PM ONWARD
Monday (Pizzas Only)
5:00PM - 7:00PM

**\$15 Lunch Specials
EVERY DAY**

Tuesday \$23 Rump Steak Night
Wednesday \$18 Chicken Schnitzel Night
Thursday \$20 Pizza Night
Saturday \$15 Club Beef Burger Lunch Special
Sunday Roast \$20 Lunch & Dinner

ALL WEEKLY SPECIALS DINE-IN ONLY

TUESDAY:

Happy Hour from 4PM - 6PM
Social Darts from 5PM
Trivia starting 6:30PM

THURSDAY:

Bingo from 11AM
Happy Hour from 5PM - 7PM
Pool Competition - rego from 6:30PM, starts 7PM
Member's Badge Draw 6:30PM, 7:15PM, 7:45PM

SATURDAY:

Live Entertainment Every Week
LAST SATURDAY OF MONTH:
Second Chance Draw & Members Badge Draw

SUNDAY:

Fisho's Weigh-In on 4th Sunday at 2PM

Callala RSL Country Fishing Club



Callala Beach Road, Callala Beach 2540

MONDAY:

Indoor Bowls - from 12PM

TUESDAY:

Veterans Golf - from 7:30 to 1PM

WEDNESDAY:

Callala Mixed Social Bowls - from 12PM

Ladies' Golf - from 8:30 to 1PM

FRIDAY:

Fitness Class - from 10:30AM

SATURDAY:

Mixed Golf Comp - from 7:30 to 1PM

EVERY DAY:

Barefoot Bowls \$15 per person,
includes equipment hire
kids aged 12 & under play for free

THURSDAY:

Bowls Raffle - tickets sold from 6PM

Bowls Schooner Draw - from 7:45PM

FRIDAY:

Mega 50 Meat Tray Raffle -
tickets sold from 6PM, drawn 7PM

SATURDAY:

Fisho's Raffle -
tickets sold from 12PM to 1:30PM

LAST SATURDAY OF MONTH:

Meat Tray Raffle -
tickets sold from 6:30, drawn 7PM

SUNDAY:

Meat & Seafood Raffle -
tickets sold from 4PM, drawn 5PM

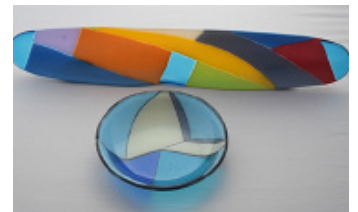
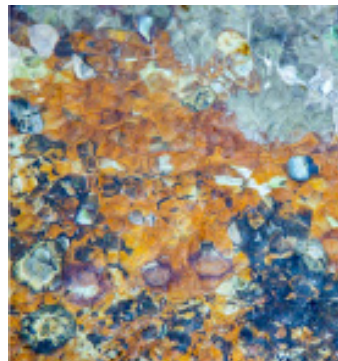
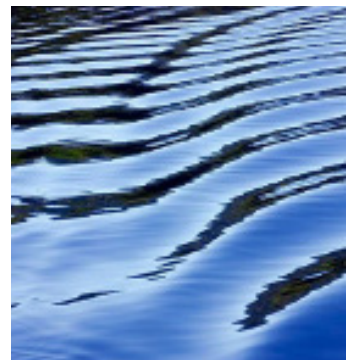
**COURTESY BUS AVAILABLE FOR A GOLD COIN DONATION
SERVICING CALLALA BAY, CALLALA BEACH, AND MYOLA
MONDAY TO SATURDAY FROM 4PM, SUNDAYS FROM 3:30PM**



CURRARONG ART TRAIL

currarongarttrail.com.au

first Saturday of every month
10am - 2pm



Emergency Phone Contacts

Situation/Service	Phone Number	Website
Injury or Health Crisis	000	ambulance.nsw.gov.au
Motor Vehicle Accident	000	police.nsw.gov.au
Police	000	police.nsw.gov.au
Police – Non Emergencies	131 444	police.nsw.gov.au
Police Crime Stoppers	1800 333 000	police.nsw.gov.au
Household Fire / Hazmat	000	fire.nsw.gov.au
Bushfire	000	rfs.nsw.gov.au
Shoalhaven RFS District Office	4424 4424	rfs.nsw.gov.au
Bushfire Survival Plan	-	rfs.nsw.gov.au
Bush Fire Information Line	1800 679 737	-
Flood, Storm and weather warnings	-	bom.nsw.gov.au
Storm / Flood	132 500	ses.nsw.gov.au
Power Outages	131 003	endeavourenergy.com.au
Main Road Closures	132 701	livetraffic.com
Local Road Closures	1300 293 111	shoalhaven.nsw.gov.au
Shoalhaven City Council	1300 293 111	shoalhaven.nsw.gov.au
Shoalhaven City Council After Hours	4421 3100	shoalhaven.nsw.gov.au
Shoalhaven Hospital	4421 3111	-
Milton Hospital	4455 1333	-

If you are **deaf** or have a **speech** or **hearing impairment** dial **106** for the Text Emergency Relay Service

Useful Apps & Websites

Visitors to the area can download the following free mobile apps to stay informed of the latest advice and information in the event of an emergency.

Emergency+ App

The Emergency+ app is a free app developed by Australia's emergency services, Government and industry partners.

The app uses GPS functionality built into smart phones to help a Triple Zero (000) caller provide critical location details required to mobilise emergency services.



emergencyapp.triplezero.gov.au

Other Helpful Apps & Websites



Fires Near Me NSW



Floods Near Me



Weather Zone



COVID Safe



BOM



Marine Rescue



Live Traffic



Facebook



Twitter



DISASTER DASHBOARDS

shoalhaven.disasterdashboards.com/get-ready/overview



Boomerang Bags

Boomerang Bags Callala Bay Callala Beach and Myola turn 7 years old and it is good to see where it all started.

We launched suppling Bags at the local shopping centre in November 2017 with a total of 600 bags and our amazing BB Family have made and distributed just over 10,000 bags in 7 years.

Every month our volunteers meet at the Callala Beach Progress Hall. We have 15 regulars, and many turn up with arm loads of bags they have sewn at home and then sew up a storm on the day.

The BB group also sews for the Shoalhaven Cancer Centre providing bags for patients.

We want to thank Shoalhaven City Council who fund our hall hire for the sewing bees, IGA Callala Bay who provide us with milk and biscuits and all the local shops that have our bags for everyone to take and collect the donations. We love seeing people using our bags and hope they give you years of use.

Do you have any fabric you would like to donate, or even a Sewing machine you have sitting in the cupboard you no longer use - we can always put them to good use. Do you want to join us to help stop plastic bags?

Contact Kay on 4446 5974 to get all the information or follow us on our Facebook page –Boomerang bags Callala Bay Callala Beach and Myola

Helping to create a plastic free Callala one Boomerang bag at a time...



The other day I bought a thesaurus, but when I got home and opened it, all the pages were blank. I have no word to describe how angry I am.

Crookhaven Mechanical Repairs



4447 5845

FREE Pick - Up Callala - Bay - Beach - Myola

We Can Service Your NEW Car AND Protect YOUR Warranty

Major Trip Prep - Suspension Upgrades - Bullbars - Accessories



ARC-AU21881

crookhavenmechanical.com.au

MVRLic35947

Contacts:

- Victoria Maudson 0424 590 105 • Gail Fitzgerald 0412 930 080 • Megan Hodges 0433 668 453

NOVEMBER NEWS

In the last two weeks we have had three separate visitor sessions. All were such a pleasure to host.

Shoalhaven High School

Last Monday was such a fun day at the Garden! We welcomed seven energetic high school students from Shoalhaven High School who'd come to investigate the CCG. They were accompanied by two teachers. First up, a quick tour of the garden, where many plants were recognized. Pleasingly, quite a few of the students had experienced growing vegetables. Then to work – two beds of potatoes were harvested in quick time, giving us a few more kilos to sell at our market and a fantastic bundle of baby carrots, some of which, after a quick wash, were eaten. Couldn't get anything fresher! Of course, they did spy the strawberries and many of those were consumed as well. Harvesting of crops had a great appeal to the students – perhaps not so much, the worm farms and compost bays. Many preferred not to interact with the little wrigglers. What next? Well, there's watering, but that's a bit dull. Why not help us shovel soil and fill up a boat. Yes please. So, they shovelled, pushed barrows, lifted trolleys and topped up the last of the boats in no time. Thanks kids, your hard work was very much appreciated and helped us tremendously. We loved having you and would welcome you back any time.



CHRISTMAS RAFFLE

Thanks to all who have contributed to and assembled our fabulous raffle prizes, worth well over \$1500. With such a great response from members, we now have 2nd and 3rd prizes. Raffle to be drawn at the Market Day on Saturday 14 December @ noon

We will have a big update next month.



Special thanks go to **Cellarbrations at Callala Bay** for hosting our raffle prize and selling tickets for us. Lastly to the raffle ticket sellers who have sold tickets individually or volunteered their time over at the local shops to sell tickets. With ongoing and increasing costs in running the garden, our fundraising helps us with all we are achieving.

Lyrebird Preschool

We jumped at the opportunity of hosting Lyrebird Preschool this month, as we have someone's Grandchild in attendance there. The children participated in strawberry plant potting, as well as watering, but mainly exploring. There were some tired little people as they left for a trek to the bay for lunch. The feedback we received is that this was one of the most enjoyable and rewarding excursions for the children and the staff alike!



BEDS AND BOATS AREA



Barry and Darryl and the team have done a great job in this area. Thanks for all your plotting and planning, design ideas and practical skills to make them happen. It has been quite a project! The last Working Bee for the year saw them filled and they are now ready for planting. We look forward to seeing the system provide consistent water to the contents over the summer period.

We hope the possum is enjoying the comfort of Barry's best work socks, that it raided from his boots

on his veranda. We know what to get him for Christmas now!

It is lovely to see the new area being enjoyed by members of the community as a place for a cuppa and a chat.

There are always plenty of things to fix in the garden, whatever your skills. Here are the Net Warriors in action. Also, here's a group having a well-deserved lunch after a successful workout. It's not all work and no play you know!

Family Fun Friday

Our regular Family Fun Friday had the biggest number of attendees ever. From our early days of sometimes only having one family being present, to today when we have numerous regularly visiting families and local groups to our morning, it has become a joyful monthly event **Next one is on 29th November 9.30 - 11 am**



WHATS ON

1st December 9am -First Sunday of Month Working Bee in the morning for Christmas Party preparation at the garden from 9am.

Christmas Party 1st December 4pm (for current Financial Members and Sponsors)

7th December – General Meeting at 2pm

14th December Produce Market

15th Dec Sunday – Regular Working Bee
December Fun Friday – **No Fun Friday** due to the "Silly Season"!

January – No General Meeting

Saturday 11th January 2025 - Market Day

Working Bees as per 1st & 3rd Sundays and usual **Tuesday** and **Thursday** mornings for those available in January.

WE NEED MORE VOLUNTEERS Do you have ANY free time that you would like to spend being useful in our Community Garden? No previous experience required!
You don't need to bring gardening know how, just enthusiasm.



Callala Bay Pharmacy

2/55 Emmett Street, Callala Bay 2540 Ph: 4446 4251

Hours: Mon-Fri 9am-5.30pm; Sat 9am -12.30pm

Friendly, professional service

- Diabetes Australia supplies • Vaccinations • Gift lines
- Blood pressure monitoring • Medication packing

Phone: 4446 4251

Dr John C Wright B.V.Sc.

CULBURRA VETERINARY CLINIC

7 Weston Street, Culburra Beach

9am-11am weekdays

4-6pm Mon, Tue, Thurs

4-5pm Wed, Fri

10am-12pm Sat

CALLALA VETERINARY Consulting Room

22 Emmett Street Callala Bay

1-3pm weekdays by appointment

Please phone: **4447 3851** for appointments, enquiries or after hour calls



E & S Painting Services

- Interior & Exterior Painting
- Friendly Local Service
- Excellent Rates
- Quality Assured

M: 0422 560 696 H: 4446 5056

Graham Worts



Vinnies

CALLALA BAY SHOP

- **High quality second-hand items**
- **Clothing, bric-a-brac, books, linen, beach towels, toys, games, DVDs, jewellery and much more!**

VOLUNTEERS NEEDED

**YOUR TIME IS THE MOST VALUABLE
GIFT YOU CAN GIVE.**

For details of how you can help,
visit www.vinnies.org.au or pop into the shop
for an application pack.

Find us at: **59 Emmett St, Callala Bay**

Opening hours: **Monday to Friday - 8.30am to 4pm,**
Saturdays - 8.30am to 2pm (during summer/peak times only)

**We welcome donations of non-bulky items during opening
hours. For pickups, please call 4421 7244.**

Callala Markets

The November Callala Markets were well attended with all vendors reporting lots of interest and sales.

We offer a range of items for sale that are unique to our stall holders. Handmade candles and soaps, wooden plaques & bowls, beautiful handmade pottery, jewellery, crystals, hand knitted baby boots and hats, designer cards, made with love knitted toys and many more. So come along and check out the variety available at your local market.

Saturday 14th December 2024 is your last chance before the holiday season to pick up a special present or gift for someone in the family, friend, schoolteacher, or coach. We'll be there from 8am to 1pm at the Callala Community Centre in Emmett Street, Callala Bay.

Your support of local craft makers and stall holders assists our Markets in supporting the local community. All profits from stall holder fees contribute to future donations. Our local school, Greenwell Point hospital auxiliary, volunteer Fire Brigades, Marine Rescue and other local charities have all been past beneficiaries.

The Callala Community Garden will also be open for visitors on that day. Fresh seasonal produce is always popular, so get there early to check the entire range.



Pottery by Sharon

We always hope for fine weather, but we'll be there - rain, hail or shine. Want to join us? Contact Sandra on 0413 581419.



2nd Saturday
EACH MONTH
42 EMMETT ST,
CALLALA BAY
8:00AM - 1:00PM



The promotional graphic features a circular logo on the left with the text 'Callala Markets' in a blue script font and 'Community focus' in a smaller sans-serif font below it. To the right, the event details are listed in bold blue text: '2nd Saturday', 'EACH MONTH', '42 EMMETT ST, CALLALA BAY', and '8:00AM - 1:00PM'. At the bottom, there are icons for Facebook and Instagram. The background is a light beige color with scattered seashells.





Tennis @ Callala Bay



Fancy a hit?

Located here in Callala Bay, the courts are attached to, and managed by the Callala Bay Progress Hall. They are located at the corner of Wearne and Morton St.

Bring your own rackets and balls!

Ring 444 64 313 to book

Available for casual and regular bookings.

Lessons—call Daisy on 049 053 7551



BUS TIMETABLE - ROUTE 120

Bomaderry-Nowra to Callala Bay, Callala Beach, Currarong & Myola

		MONDAY TO FRIDAY							SATURDAY				SCHOOL HOLIDAYS						
		AM	AM	AM	PM	PM	PM	PM	AM	AM	PM	PM	AM	AM	PM	PM			
OUTBOUND		AM	AM	AM	PM	PM	PM	AM	AM	PM	PM	AM	AM	PM	PM	AM	AM	PM	PM
LOOK FOR ROUTE NUMBER 120 Train Arrives (Bomaderry Rail)		6:17		9:15	12:27	14:17	17:10			8:19	12:21	14:19							
BUS DEPARTS																			
Bomaderry Railway		6:33	--	9:30	12:32	14:40	17:17			9:30	12:32	14:40	--	--	9:30	12:32	14:40	17:17	17:17
Nowra Tafe		--	--	9:32	12:35	--	15:30 S			--	--	--	--	--	--	--	--	--	--
Stewart Place, Nowra		6:43	--	9:20	12:20	14:55	17:24			9:20	12:20	14:55	--	--	9:20	12:20	14:55	17:24	17:24
Stocklands Nowra		--	--	9:40	12:40	14:45	17:34			9:40	12:40	14:50	--	--	9:40	12:40	14:50	17:34	17:34
Shoalhaven High School		--	7:55	--	--	--	--			--	--	--	--	--	--	--	--	--	--
St Michaels School		--	--	--	--	15:00	--			--	--	--	--	--	--	--	--	--	--
Hwy opposite Bunnings		--	--	9:45	12:45	15:10	--			9:45	12:45	15:00	--	--	9:45	12:45	15:00	17:40	17:40
Hwy Pearl Service Station		--	--	9:46	12:46	15:11	--			9:46	12:46	15:01	--	--	9:46	12:46	15:01	17:41	17:41
Mayfield		--	--	--	--	--	15:45 S			--	--	--	--	--	--	--	--	--	--
Sydney Avenue		--	--	10:10	DOR	15:32	16:05 S	17:58		10:10	DOR	DOR	DOR	DOR	10:10	DOR	DOR	17:58	17:58
Boorawine Terrace		--	--	10:13	DOR	--	--	--		10:13	DOR	DOR	DOR	DOR	10:13	DOR	DOR	DOR	DOR
Callala Bay Shops		--	--	10:16	DOR	15:33	--	18:00		10:16	DOR	15:15	--	--	10:16	DOR	15:15	18:00	18:00
Callala Bay Public School		--	--	10:17	DOR	15:34T	16:17T	--		10:17	DOR	DOR	--	--	10:17	DOR	DOR	DOR	--
Queen Mary Street		--	8:12	10:20	DOR	15:46	16:31 S	--		10:20	DOR	DOR	--	--	10:20	DOR	DOR	DOR	--
Catherine Street Myola		--	8:20	--	DOR	15:51	16:35 S	--		--	DOR	DOR	--	--	--	DOR	DOR	DOR	--
Sir Henry Crescent		--	8:27	10:23	DOR	15:56	--	--		10:23	DOR	DOR	--	--	10:23	DOR	DOR	DOR	--
Callala Beach Shops		--	8:29	10:25	DOR	15:44	--	18:05		10:25	DOR	DOR	--	--	10:25	DOR	DOR	DOR	18:05
Wattts & Lennox loop		--	8:32	10:28	DOR	15:42	--	--		10:28	DOR	DOR	--	--	10:28	DOR	DOR	DOR	--
Callala Bay Shops		--	8:45	--	DOR	--	--	--		--	DOR	DOR	--	--	--	DOR	DOR	DOR	--
Fishery Rd @ Merimbula St Currarong		--	7:12	--	DOR	15:56	16:26	--		--	DOR	DOR	--	--	--	DOR	DOR	DOR	--
Crookhaven Pde @ Piscator Ave		--	7:15	--	DOR	16:00	16:25	--		--	DOR	DOR	--	--	--	DOR	DOR	DOR	--



ROUTE 120 Bomaderry-Nowra to Callala Bay, Callala Beach, Currarong & Myola



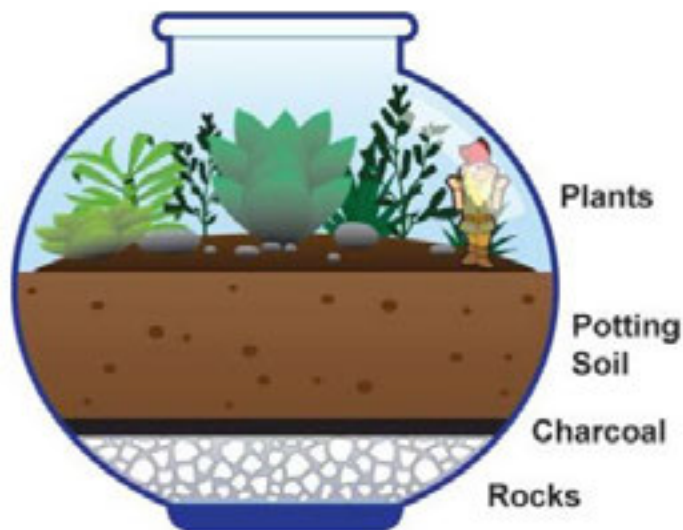
MONDAY TO FRIDAY	WEEKDAYS										SATURDAY				SCHOOL HOLIDAYS						
	AM	AM	AM	AM	AM	AM	AM	AM	PM	PM		AM	AM	PM	PM	AM	AM	PM	PM		
OUTBOUND																					
INBOUND																					
Crookhaven Pde	--	7:15	--	8:25	--	--	16:25	--	8:00	--	--	16:25	--	8:00	--	--	8:00	--	--	--	--
Yalwal Street	--	7:16	--	8:26	--	--	16:24	--	8:01	--	--	16:24	--	8:01	--	--	8:01	--	--	--	--
Tennis Court	--	7:17	--	8:27	--	--	16:23	--	8:03	--	--	16:23	--	8:03	--	--	8:03	--	--	--	--
Progress Hall	--	7:19	--	8:28	--	--	16:22	--	8:04	--	--	16:22	--	8:04	--	--	8:04	--	--	--	--
Currarong Beachside Tourist Park	--	7:20	--	8:30	--	--	16:20	--	8:05	--	--	16:20	--	8:05	--	--	8:05	--	--	--	--
Callala Bay Road @ Sydney Ave		7:32 T	--	8:41	--	--	13:45	15:32	8:20	--	13:45	15:32	8:20	--	13:45	15:32	8:20	--	13:45	15:32	8:20
Callala Bay Public School	--	7:35 S	--	8:45	10:17		13:53	15:35	8:27	--	13:53	15:35	8:27	--	13:53	15:35	8:27	--	13:53	15:35	8:27
Queen Mary Street	--	--	7:15	8:12	10:20		13:59	15:46	8:31	--	13:59	15:46	8:31	--	13:59	15:46	8:31	--	13:59	15:46	8:31
Catherine St Myola	--	--	7:20	8:20	--	--	15:51	15:51	8:36	--	--	15:51	15:51	8:36	--	--	8:36	--	--	--	8:36
Sir Henry Cres	--	--	7:22	8:27	10:23	--	14:03	15:55	8:40	--	14:03	15:55	8:40	--	14:03	15:55	8:40	--	14:03	15:55	8:40
Callala Beach Shops	5:51	--	7:25	8:30	10:25	--	14:05	15:44	8:42	--	14:05	15:44	8:42	--	14:05	15:44	8:42	--	14:05	15:44	8:42
Wattts & Lennox loop		--	7:27	8:32	10:28	--	14:08	15:42	8:45	--	14:08	15:42	8:45	--	14:08	15:42	8:45	--	14:08	15:42	8:45
Callala Bay Shops Emmett Street	5:58	--	7:35	8:46	10:16	--	13:53	15:34	8:26	--	13:53	15:34	8:26	--	13:53	15:34	8:26	--	13:53	15:34	8:26
Boorawine Terrace	--	7:31 S	--	8:40	10:13	--	13:48	--	8:23	--	13:48	--	8:23	--	13:48	--	8:23	--	13:48	--	8:23
Bay Street	--	7:32 S	--	8:41	10:14	--	13:49	--	8:24	--	13:49	--	8:24	--	13:49	--	8:24	--	13:49	--	8:24
Lackersteen & Emmett St	6:02	7:34 S	--	8:43	10:15	--	13:52	--	8:25	--	13:52	--	8:25	--	13:52	--	8:25	--	13:52	--	8:25
Sydney Ave	6:04	7:35 S	--	8:47	10:10	--	17:58	--	17:58	--	17:58	--	17:58	--	17:58	--	6:04	--	6:04	--	6:04
Mayfield Bus Turnaround	--	7:45 S	--	--	--	--	--	--	--	--	--	--	--	--	--	--	--	--	--	--	--
Shoalhaven High School	--	7:55 S	--	9:04	10:40	--	16:10	--	8:55	--	16:10	--	8:55	--	16:10	--	8:55	--	16:10	--	8:55
HWY before Central Ave	6:14	--	--	9:04	10:40	--	16:10	--	8:55	--	16:10	--	8:55	--	16:10	--	6:14	--	6:14	--	6:14
Central Avenue	--	--	--	--	--	--	17:34 T	18:37 T	--	--	17:34 T	18:37 T	--	--	--	DOR	--	--	--	--	--
Bunnings Bus Stop	6:15	--	--	9:05	10:41	--	16:11	--	8:56	--	16:11	--	8:56	--	16:11	--	6:15	--	6:15	--	6:15
Stewart Place, Nowra	6:43	8:20 S	8:20 S	9:20	10:55	12:20	--	--	9:20	--	12:20	--	9:20	--	12:20	--	--	--	9:20	--	9:20
Bomaderry Rail	6:33	8:15 S	8:15 S	9:30	11:00	12:32	14:40	16:30	9:30	--	12:32	14:40	16:30	--	12:32	14:40	6:33	--	6:33	--	6:33
Nowra Tafe	--	8:30 S	8:30 S	9:32	10:58	12:35	--	--	9:32	--	12:35	--	9:32	--	12:35	--	--	--	9:30	--	9:30
Stocklands Nowra	--	--	--	9:40	11:20	12:40	14:45	--	9:40	--	12:40	14:45	--	9:40	--	12:40	14:45	--	9:40	--	9:40
Train Departs (Bomaderry Railway)	6:43	8:17	8:17		11:23	13:16	16:12	17:14	18:16	19:19											
DOR = Drop on Request																					
T = Transfer																					
S = Dedicated School Service																					

Culburra Beach & District Garden Club Inc.

Hi everyone, As we couldn't get a guest speaker for our last meeting of the year, President Bev stepped up and answered one of member's questions from the previous meeting. The question was how do you make a terrarium? Terrariums are miniature gardens housed inside small, sealable glass containers. As fully functioning plant ecosystems, they're mostly self-sustaining. The plants water themselves through transpiration and condensation. The origins of the name come from the Latin terra ("earth") + arium (a place or receptacle). Like an aquarium, just for plants and earth instead of fish and water.

Bev brought in a medium sized brandy snifter (you can use a fish tank, a vase , large jar, fish bowl) as the container. She told us that she added a layer of gravel, charcoal(to filter the water and prevent the growth of fungi) potting mix and purple pebbles . In the soil, she made a hole big enough for the roots of the plants to rest. Bev then positioned the plants in the thin layer of soil and added the second layer of soil around the plants and pressed the soil firmly. The plants she used were Zebrina and a Bird's nest fern and she added a little frog. It looked lovely and Bev plans to bring it back to show us it's progress.

Terrariums do not need to be watered often, if closed, you might water them once a month. Open terrariums benefit from being watered every 3-6 weeks. Check the soil to see how much water they need. If you choose to grow ferns, trim leaves to prevent them from overgrowing. Make sure to remove yellow and brown leaves from any plants in your terrarium. This is a sign of disease or pest. If you have an open terrarium, monitor for pests such as mealy bugs. If you have closed terrarium, you may want to remove the lid every now and then to let in some fresh air. Most need either direct or indirect light, but artificial light may also be used.



The theme for the display table was the colours of November, yellow and red and the gem was Topaz. Members were asked to bring a floral display and their favourite Christmas decoration. I took my Shamrock decoration which I bought from Belfast in 2012. Victoria had a collection of decorations from Denmark-Royal Copenhagen and George Jensen, Sharran bought a decoration given to her by her daughter, Bev had a wreath that she made from pieces of Christmas material, Kim's mum was called Noelle and her decoration with the word Noel reminds Kim of mum every Christmas, Mary's decorations were made by her grandchildren and Carolyn brought in a blue little man with a beard and she said it resembles her husband. An insight into family stories with just a humble decoration.

On behalf of the Garden club, I would like to thank the CBCA committee for their ongoing support. I want to wish the Committee and the local Community a very Merry Christmas and Peace and Joy for the coming year. Our Garden Club meetings will commence on Saturday February 15th 1.30pm at Culburra Anglican Church, Penguin Head Rd, Culburra Beach.

Cheers to all and happy gardening, Doris Carpenter: 4446 5631

SOUTH
COAST
SOUL
CALLALA



LOCAL
YOGA
PILATES
YIN YOGA

WEEKLY CLASSES AT CALLALA BEACHFRONT HALL

MONDAY 5:30PM PILATES STRETCH

TUESDAY 9:30AM YOGA FLOW

WEDNESDAY 5:30PM YIN RELAX YOGA

89 QUAY RD - ALL WELCOME - PROPS AND MATS AVAILABLE

INQUIRIES: 0422 433 159

📷 @CARLA_VERSITANO 📷 @SOUTH.COAST.SOUL

🌐 SOUTHCOASTSOUL.COM.AU



WAYNE'S
W E L D I N G

ABN: 72 721 264 751

Wayne Birt

Aluminium or Steel Boat Repairs

Trailer (box or boat) Repairs

MIG and TIG

Custom work for cars, boats or caravans

Phone: 0407 203 041

OVER 50? RETIRED?

**Invest \$25,000
in my not for profit
boating/tourism venture
and buy a partnership in
a hands-on business-
hobby and interest.**

**for full details see website:
www.wooden-boat-charter-australia.com.au
*The Time Warp River Cruise Company***

Thinking of having a function or meeting . . .



Why not have a look at the Callala Community Centre?

There is table seating for 110 with crockery and cutlery and a modern kitchen.

The centre is airconditioned and has state-of-the art audio visual capability for presentations, training and other entertainment included as part of the hire fee.

Car-parking is adjacent to the Centre and the Callala shops are opposite the Centre.

The Centre has grass surrounds, giving you the option of outdoor training as well as indoor.

If you have an exercise or social group or are looking for a place to hold your next celebration, call Cynthia on **0412 121 737** for enquiries. You can also look for us on **Facebook**

FREE

Pre-Loved Clothing & Book Stall

First Saturday of the Month
at the

Callala Community Centre

9.30am to 12.00 NOON

Clothes in good condition can be dropped off at the stall (on the day only). If clothing can be delivered by 10am; this will allow them to be displayed.

Sponsored by the Anglican Church, Callala

Defibrillators in Callala Bay



There is a number of defibrillators in Callala Bay.

They are located at:

- Club Callala
- IGA Supermarket
- Jervis Bay Sailing Club
- Callala Community School
- Callala Medical Centre
- Callala Community Centre
- Callala Rural Fire Brigade
- Myola Tourist Park

If you know the location of others, could you please contact Merry on 0439 809 088.



Callala OOSH By Katie

Callala Before and Afternoon Care for school-aged children by qualified and caring staff.

For information please call Katie-

0419917793 or 0427976669

email: callalaooshbykatie@gmail.com

Why did the coffee taste like dirt? Because it was ground just a few minutes ago.



Callala Bay
Open 7 Days A Week
Market-Fresh Fruit and Vegetables
Lotto Newspaper ATM

Ph: 4446 4811

It Pays to Shop Independent

Located in Bayview Plaza, 55 Emmett Street, Callala Bay

How the locals like it.

The Anglican Parish of Culburra Beach

Anglicare Op Shop

Shop 3/4 Weston Street, Culburra Beach

Opening Hours:

Mon-Fri 9am - 4pm

Sat. 9am-12pm

** Closed Public Holidays*

Clothing, bric-a-brac, books, toys, linen, games, DVD'S, jewellery and more.

EFTPOS available

Saleable Goods are most welcome, but we can't accept furniture, white goods, mattresses, encyclopedias, computer ware and videos.



You can drop goods at shop or in charity bin situated at Culburra Anglican Church, Penguin Head Rd, Culburra.

If you would like to volunteer, please contact

Manager Neroli McCusker:

4447 4084 (Shop) or 0401 466 590



WELCOME to the Callala Community Centre, conveniently located opposite the shops in Emmett St, Callala Bay.

We are one part of the Shoalhaven Community Information Network (SCIN). Our technology has been upgraded to include solar panels, a storage battery, and satellite communications to provide an independent, continuous, communication solution with the Nowra Emergency Centre.

The information can be seen on the screens located at the Centre.

An audio-visual system has been installed in the Centre offering flexible and comprehensive facilities, including;

- blue tooth; computer connectivity; the ability to operate DVDs and CDs and play personal audio-visual files from a USB drive or SD memory card.

If you want to have a wedding; memorial service; business conference; group gathering or family reunions the Callala Community Centre is well worth considering.

Our facilities include

- A well-equipped kitchen; air conditioning; raised stage and off-street parking, and
- Crockery, cutlery and glasses and seating for up to 120 people

For all hiring enquiries contact Cynthia on 0412 121 737
or email cynirwin974@gmail.com

Follow us on Facebook at Callala Community Centre.

Callala Bay Progress Hall and Tennis Court



**Looking for a venue with history and charm?
Available for both casual and regular hire**
*Recently renovated ... and now with new audio visual
equipment available! Reasonable rates.*

**Bookings Ph: 444 64 313
or via Facebook**
75 Boorawine St, Callala Bay

Regular Community Users

Dru Yoga: Monday (2:45pm)
Craft Group: Tuesday (10am)
Friends of Dance: Tuesday (2:30 pm)
Yoga: Thursday (9am)
Tai Chi: Saturday (8am)

Lyn ph 0419427574
Yvonne ph 444 66 280
Ann ph 0418 477828
Anna ph 0405 102 234
Jenny ph 04477 43179

Tennis Lessons: Saturday (midday)

Daisy 0490 537 551

<https://callalabayprogresshall.weebly.com/>



FROM THE DOCTOR

As a general practitioner, I often discuss skin cancer prevention with my patients, particularly those at higher risk. Recent research has highlighted the potential role of vitamin B3, or niacinamide, in reducing skin cancer risk. According to the Australian Cancer Council, niacinamide has shown promise in clinical studies for preventing non-melanoma skin cancers, such as basal cell carcinoma and squamous cell carcinoma.


Vitamin B3 works by improving the skin's repair mechanisms and reducing inflammation, which can contribute to the development of skin cancer. Topical applications and oral supplements have both been studied, with evidence suggesting that regular use may lower the incidence of these skin cancers in individuals with a history of sun damage.

While vitamin B3 is not a substitute for sun protection, including sunscreen, protective clothing, and avoiding excessive sun exposure, it offers an additional tool in the fight against skin cancer. I encourage patients to discuss whether vitamin B3 is suitable for you at your next skin check.

Finally, the team at Callala Medical Centre wish everyone a safe and Merry Christmas and a happy New Year. We will be open and ready to look after the community on all non public holiday days as usual, but with reduced staffing and hours between Christmas and New Year.



Website Design • Graphic Design
Printing • Logo Design

 0414 785 776

 info@scottmorgan.com.au

 scottmorgan.com.au

The Groutfather

Tile, Grout & Silicone Hygiene Cleaning, Sanitising (Mould)
& Restoration/Repairs

Specialising in:

Showers, Bathrooms, Kitchens, Floors & Outdoor areas

FREE inspections/Quotations

Servicing Callala Bay & Beach, Myola & Culburra

George - 0481 811 962 – Email: shelmara62@gmail.com



Callala Public School Parents & Citizens Association Inc.
Emmett Street, Callala Bay, NSW, 2540
callalapandc@gmail.com

Callala Public School P & C Canteen Volunteers Needed

Callala Public School's canteen is operated by the P&C with all profits invested back into the school.

It is a purely volunteer run canteen, with Dan Applebee being our manager who looks after the daily running of the canteen along with the help of other volunteers.

At the present time we only have one other volunteer. In order to keep the canteen operational we need more volunteers. If you have time to spare 9am - 12, be it once a week, fortnightly, monthly or even once a term we would love your help.

Duties include preparation, heating and serving of lunch orders, assisting with window sales at 1st break and some light cleaning.

To volunteer in the canteen you are legally required to complete the following:

Working With Children check, which is obtained through Services NSW. It's free as you are a volunteer.

<https://www.service.nsw.gov.au/transaction/apply-for-a-working-with-children-check>

Food Handler Basic Training online through NSW Food Authority

<https://www.foodauthority.nsw.gov.au/training/food-handler-basics-training>

Can you help us? It's only 3 hours and 15 minutes. For more information or assistance in completing the online forms please contact the school office on 44464352 and one of our P & C representatives will contact you, or email us at callalapanc@gmail.com

We look forward to meeting you.

New Affordable Housing Strategy finalised - 24 October 2024

Council has finalised its new Affordable Housing Strategy based on the feedback received during the recent community exhibition period.

The strategy identifies the affordable housing challenge in Shoalhaven and establishes the work Council will do to help increase the supply of affordable housing and improve the cost of housing more broadly.

“Many residents in need of affordable housing within Shoalhaven are those who earn a steady income but are still unable to meet their housing needs as well as their other essential living costs, such as food, clothing, transportation, medical care, and education,” said Mayor Patricia White.

“Affordable housing is a complex matter that requires a collaborative cross-government and private sector approach to achieve a positive outcome and provide a diversity of housing for our communities,” Cr White said.

Most of the submissions supported the preparation of the strategy, the identified actions and Council’s continued work to help deliver affordable housing. Several organisations offered to collaborate with Council on proposed advocacy, education, and feasibility testing activities.

Some submissions raised concerns about Council’s role in delivering or facilitating the supply of affordable housing, or objected to attempts to increase the amount of affordable housing locally.

Results from the 2021 census indicate that more than 4,000 households are in housing stress and 2,000 households need affordable housing.

The new strategy outlines a range of measures to address the housing affordability including through the direct delivery of housing on Council land, requiring development to

provide affordable homes, collaboration with Community Housing Providers, and advocating with the NSW and Australian Governments on a range of related reform.

Local Community housing provider, The Housing Trust, recently published its Affordable Housing Scorecard ranking the efforts of Council’s in the Illawarra-Shoalhaven region on a scale from A to F. Pleasingly, Shoalhaven again received a “B” for its continued efforts and proposed work.

Council used funding received from the NSW Government’s Regional Housing Strategic Planning Fund to prepare the new Strategy.

For more information and to read the new Affordable Housing Strategy or the Summary and Consideration of Submissions and Council Response documents, visit Council’s Affordable Housing webpage.



YOUR AD HERE

Advertise Your Business With
The CBnews Today!

Contact the Editor for more info
editor.cbcanews@gmail.com

Bushcare

Callala Bushcare weekly sessions continue on Tuesday mornings from 9 - 11am. Generally there's a bit of morning tea afterwards. Please contact me, Diana on 0419 531 902 to find out the area where the working bee will be held.

If you are interested in Bushcare but not available on Tuesday mornings, you can contact me, and alternate time can be arranged for you to get an idea of the work we do. One question I am asked from time to time by passers by is 'how do you know which are the weeds?' The answer is many hours working in weed infested Natural Areas hones one's eyes to what is a weed and what is not. That, apart from safety considerations, is why we ask that bushcare work be done with a member of our team or with our guidance.

I don't need to tell readers that we live in a Natural Wonderland. My interest in plants extends into the bay and the fabulous seagrass meadows. Here's a Citizen Science challenge for you. The seagrass around our bay is *Posidonia australis*. Seagrasses are terrestrial plants that migrated back into the sea between 70 - 100 million years ago. They are the only flowering aquatic plants. I have often seen the seed pods/fruit cases, shown in the photo below.



What I haven't seen, and can't find any photos of online, are the flowers which bloom earlier in Spring. Have any readers ever seen these flowers?

Ticks - in my quest to find the best way to stop being bitten by ticks - I'm now using a wearable electronic 'repeller', see below. It's 6cmx2.5cm and has a clip on the back to attach to clothing, I just use a lanyard as well because I lose things in the bush. A Culburra Bushcare volunteer has been using one of these for eight years, he had to replace the battery after 5 years. I've only been using this one for a few months, but it seems to work. There is a pet version.



A heads up - apparently the Coastal Management Team are about to do more work around Callala Bay. Bushcare has not been consulted about any of their work - we found out about the new works because someone thought to forward us an email. The fact that they plant at the wrong time of year and use inappropriate plants on the foreshore just adds salt to the wound for me given I also do voluntary work propagating these plants at the Bushcare Nursery.

Enough whining for now, enjoy the bushland in Springtime.

Any further information or if you would like to try out Bushcare at another time, my name is Diana, phone 0419 531 902.

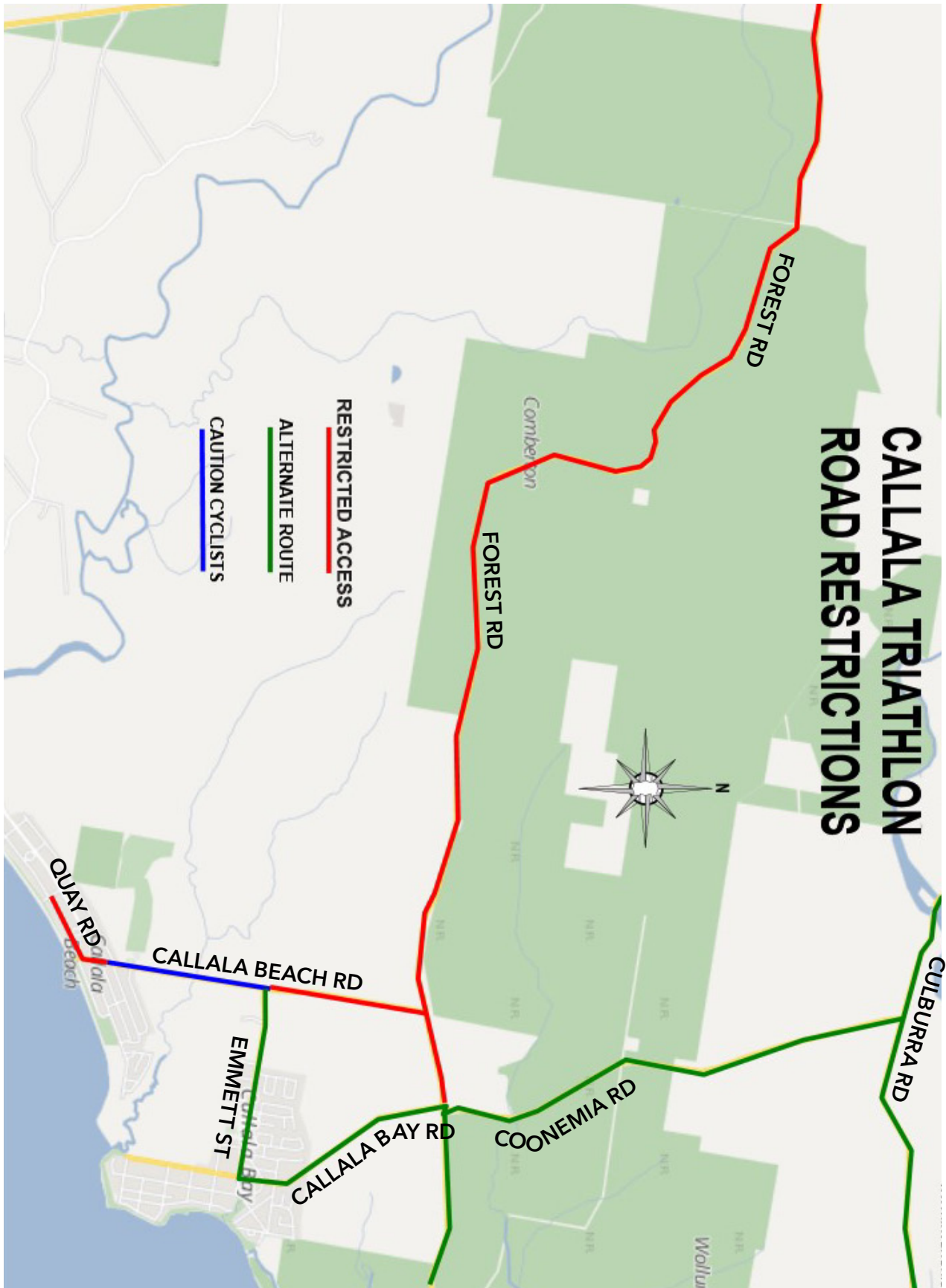


ALTERNATE TRAFFIC CONDITIONS WILL APPLY ON SAT 7TH DECEMBER 2024

The following traffic conditions and restrictions have been considered and adopted by Shoalhaven City Council & NSW Police in conjunction with Elite Energy. Please take note of area maps, optional travel routes and times of road restrictions.

ROAD RESTRICTION	DESCRIPTION	TIME
CALLALA BEACH COMMUNITY CENTRE	Carpark RESTRICTED ACCESS	12.00pm Thur 5th – 6pm Sat 7th
SATURDAY 7TH DECEMBER 2024		
FOREST ROAD	RESTRICTED ACCESS - Princes Hwy to Callala Bay Rd	8am - 12.30pm
CALLALA BEACH RD	RESTRICTED ACCESS - Quay Rd to Forest Rd	8am - 1.00pm
CENTRE STREET	RESTRICTED ACCESS - Quay Rd to King George St	8am - 1.00pm
QUAY ROAD	RESTRICTED ACCESS - Callala Beach Rd to Sir Henry Cres	8am - 1.00pm
FOREST ROAD & CALLALA BEACH ROAD	60km Speed Reduction	8am - 1.00pm

Please note: Roads closed to public access. Residential access will be maintained throughout the closures.



15 Haigh Ave, Nowra NSW 2541 | office@eliteenergy.com.au
 Office: 02 4423 7775 | Event day: 0439 538 903



A Special Notice

Please be aware that of October 15 2024, a new bill was introduced to NSW Parliament regarding new tenancy and rental laws in NSW. It is called the Amendment Bill and is expected to pass in early 2025.

PLEASE NOTE - THIS IS ONLY CURRENTLY A PROPOSAL

The new legislation, if passed in parliament, would be likely to come into effect early 2025 and has a few changes you should be aware of. It focuses on rent increase caps, no ground termination and new pet reforms.

What does it mean?

Termination notices –

- A no ground termination notice for periodic agreements will no longer be in use. Prescribed grounds of termination would need to be provided for a landlord to terminate a fixed term or periodic tenancy.
- “Tenancy exclusion periods” is forecasted to be introduced. This means it is an offence for a landlord who issues a termination notice on a prescribed ground to relet the property within a certain time frame.
- Changes to termination notice periods are included in the Amendment Bill.

Pets –

- Tenants will be allowed to keep pets in rental properties if strict guidelines are followed, including a set period for landlords to respond to requests from tenants if this bill is passed.
- It is proposed that landlords will be allowed to refuse consent regarding pets on specific grounds eg overcrowding of animals, property suitability, potential damage to the property that would cost more to fix than the rental bond, where a landlord lives at the rental property, legal restrictions and when a tenant refuses to agree to landlords’ reasonable conditions.

- Pets will no longer be considered “unreasonable conditions” regarding increasing rent, applying for a rental bond or other form of security for the pet.

Other possible changes include -

- Rental amounts can only be increased once every 12 months, regardless of the type of lease (fixed or periodic term)
- It is proposed that tenants will need to use “approved electronic bank transfer methods” or “Centerpay” as options for rental payments.
- Landlords or agents are not permitted to charge prospective tenants for background checks or lease preparations.



CULBURRA & DISTRICTS COMMUNITY HEALTH SERVICES Inc.



Hello EVERYONE,

We would like to tell you a little about our Culburra & Districts Community Health Services Inc.

We are a Not-for-Profit organisation and was incorporated (CDCHS) on 8th March 1988.

We have a great Medical Bus service for you to avail yourselves of if needed, runs Monday-Friday (no Public Holidays). If you have a Medical appointment (only) either locally or into Nowra and you would like transport, please phone:

CULBURRA PHARMACY
187 PRINCE EDWARD AVE
CULBURRA BEACH
02 4447 2382

All you need to do is supply your details –

NAME, ADDRESS, PHONE NUMBER, DATE & TIME, WHERE YOUR MEDICAL APPOINTMENT IS THAT YOU NEED TO GO TO AND RETURNING FROM.

The Chemist shall put your details onto the Medical Bus run sheet for that day.

We cover the areas of: Currarong, Callala Bay, Callala Beach, Myola, Orient Point, Culburra Beach, Pyree, and Greenwell Point.

A small donation is always welcome as this along with our Op Shop helps to keep this fabulous community service running.

If you would like to be a volunteer Bus Driver (no special licence is required) or Op Shop Gem, please contact:

Contact: Neil Watson (Bus Drivers) 02 4447 4713
or
Pat Porter (op Shop) 0408 019 930.

Public Amenity (Toilets) - Wowly Creek Callala Bay

This is the latest advice provided to the CBCA . While it is not the news we want, the CBCA will persist to have better facilities provided at Wowly Creek.

‘Thank you for your email received on the 29 August 2024 regarding a permanent toilet facility at Wowly Creek Callala Bay. The CEO has requested Building Services to respond on her behalf. Council’s Community Infrastructure Strategic Plan (CISP) makes recommendations for the future provision, priorities, and funding of community infrastructure at local, district and regional levels. Under the CISP, Wowly Creek Reserve is identified as a local level park. The provision of amenities within local parks is not recommended under the CISP.

Further development of recreational facilities within the reserve would potentially negatively impact on the environmental values of the reserve through necessary site disturbance, including vegetation clearing and excavation during construction activities, plus soil disturbance and site denudation over time due to increased visitor activities relating to the developments. Since upgrades to Wowly Creek Reserve have not been identified in any of Council’s strategic plans or forward planning working documents, there is no capital or operational budget for the provision

of any additional infrastructure that is not already provided at the site.

The nearest public toilet to Wowly Creek is at the Callala Bay boat ramp, approximately 700 metres (nine-minute walk) from this location.

The Sheaffe Street Project

The latest news about the footpath:

“The project continues, with detailed design on the drainage works underway, before commencing construction. The traffic count was completed some time ago.

The project is still slated for construction in the third quarter of the current financial year.”

The CBCA will advise you of the start date. Persistence really does pay.

I told my doctor I broke my arm in two places. He told me to keep out of those places.



VEOLIA
Mulwaree Trust

The new Sharp printer has been purchased through the generosity of a grant from the Veolia Mulwaree Trust.

Truck & Forklift Driving School

Desire Bhugon

RMS Approved: LR, MR, HR, HC (Auto
and Manual)

OLDER DRIVER ASSESSOR



Tel: 02 444 66861 Mobile: 0418 654 572 Email: desdschool@bigpond.com



Callala Physiotherapy and Pilates

Pre and Post-operative Rehabilitation | Reformer Pilates
Sporting injuries | Arthritis management

www.callalaphysiopilates.com.au

Phone: (02) 4413 0349 Email: info@callalaphysiopilates.com.au

Property

One
Realty



Specialising in all aspects of real estate, Property One Realty has had a local presence for over 20 years. We offer sales, holiday and permanent rent services. Contact our team or stop in to discuss the best options for your investment.

Ensuring your next move is a positive one.

www.propertyone.com.au

44466800 | callala@propertyone.com.au | 9/55 Emmett Street, Callala Bay

COMMUNITY CONTACTS

Emergency Police Fire Ambulance: 000

Nowra Police Local Area

Command: **4421 9699**

Crime Stoppers: **1800 333 000**

(anonymous reporting)

Police Assistance Line: **131 444**

(non emergencies)

State Emergency Service: **132 500**

Jervis Bay Marine Park: **4441 7752**

Callala Medical Centre: **4446 5350**

Shoalhaven Hospital: **4423 9500**

Milton Hospital: **4454 9100**

Shoalhaven City Council

General enquiries, business hours: **4429 3111**

Emergencies & after hours: **1300 293 111**

Justices of the Peace

Howard Duncan: **4446 6535**

Dallas McMaugh: **0400 189 875**

Culburra Beach & District Garden Club

We meet every 3rd Saturday of month

Feb-Nov at 1.30pm

Venue: Culburra Anglican Church
Penguin Head Rd, Culburra Beach.

For more details contact

Doris Carpenter: **4446 5631**

**Culburra & Districts Community
Health Service**

Visit the Op Shop and pick up a bargain!
Proceeds help maintain the Medical Bus
that transfers people to Nowra for medical
appointments from Greenwell Point,
Culburra Beach, Callala Bay & Beach,
Currarong and Myola.

Please contact Culburra Pharmacy on
4447 2382 to arrange transport.

Culburra Beach & Districts Men's Shed

Location: Beside the Banksia Community
Hall, off Fred Evans Lane, Culburra
Beach (IRT entry).

Open: 8.30am to 1.00pm, Monday and
Wednesday.

All enquiries: Phone **0494 055 329** or
email **CBDMS1@outlook.com**

**Culburra Beach Orient Point Men's
Shed Inc.**

Location: Old Scout Hall Cnr West Crest
& Wollumboola Lane

Open 8:30am - 12:30pm Tuesday,
Wednesday and Thursday

All enquiries:

Phone 0498023781 or email
cbopmshed@gmail.com

www.culburrabeachmensshed.org.au

FACEBOOK: Culburra Beach Orient Point
Men's Shed

www.facebook.com/cbopmshed

Callala Community Garden

52 Emmett Street Callala Bay
Opposite The Shops

Victoria Maudson: **0424 590 105**

email: callalacommunitygarden@gmail.com

 /groups/CallalaCommunityGarden

Drop In's welcome

DISCLAIMER

The Publisher, known as Callala Bay Community Association Incorporated, does not accept any responsibility or liability in any way whatsoever with regard to any of the paying advertisers contained in this newsletter. Additionally the views and comments of all reports submitted are the responsibility of the person/organisations submitting same, including those from SCC (Shoalhaven City Council), which are usually copied verbatim from correspondence and are included for your information. The reports do not necessarily reflect the views of the Publisher.



Join the bank that's bigger for you.

Community Bank Nowra & Districts

Bendigo Bank
98 Kinghorne Street
Nowra NSW 2541

02 4422 7574

nowra@bendigoadelaide.com.au

Bendigo Bank



Vanessa Middleton

Licensed Real Estate Agent

0492 945 367

vanessa.middleton@ljhooker.com.au

nowra.ljhooker.com.au



Vanessa is a well known face in our community, a **local of Callala for 28 years** and working locally in real estate for the past **17 years** with extensive knowledge and insight into the local market. Her dedication to customer service, innovation, honesty and openness have been the cornerstones of Vanessa's record of success over many years. Known for her friendliness, understanding, enthusiasm & strong negotiation skills.

A consistent number of repeat referrals is a testament to her expertise.

If you are looking for a local in real estate for buying or selling contact me today.

Happier, healthier pets

South Coast Veterinary Services is your local, independent and exclusive veterinary care provider.

Our complete range of in-home and mobile pet services take the stress out of trips to the vet ... for happier, healthier pets.



SCVS

South Coast
Veterinary
Services

Book a visit, manage prescriptions and pay online. Get in touch for more details.

Dr. Glynis Kuipers

0412 319 110

office@southcoastvet.com.au

www.southcoastvet.com.au