

Callala Bay NEWS

January 2025

Issue 135-2025

Monthly Magazine from the Callala Bay Community Association Incorporated



*The Callala Bay NEWS proudly supports your local community
by helping to fund projects that benefit all residents.*

Consider supporting us by subscribing for a small yearly fee.

Contact: editor.cbcanews@gmail.com



ATB GARDENS YARDS + TREES

All aspects of garden, yard & property maintenance

- Lawn Mowing • Irrigation • Fertilising • Aerating
- Tree Work • Landscaping • Hedging • Mulching
- Rubbish Removal • Domestic & Holiday Rental Cleaning
- High Pressure Water Cleaning • Garden & Yard Make Overs



• Commercial • Domestic • Rural Properties

0415 732 801

ABN: 16 821 580 073

andrew@atbcontractors.com.au | www.atbcontractors.com.au



Enrolment for children 2 to 5 yrs
Open 8am – 4.30pm
University & TAFE trained teachers
'School Readiness' curriculum
Fee rebates available to eligible families

Awarded 'Exceeding National Quality Standards' by the NSW Department of Education and Communities.

For further information please call us on **4446 6089**



first national
REAL ESTATE

Callala 4446 4313



Callala First National has been servicing the local area for more than 19 years and continues to strive to provide a service above and beyond our clients expectations. If you are considering selling or renting your property contact our friendly team on 4446 4313 or drop into our office at 58 Boorawine Terrace, Callala Bay.
www.callalafirstnational.com.au

CALLALA BAY NEWS

*A monthly newsletter of the
Callala Bay Community Association Inc.*
ABN: 68 031 980 561
www.callalabaycommunityassociation.com
Email: admin@callalabaycommunityassociation.com
PO Box 14 Callala Bay 2540

CBCA Inc COMMITTEE

President

Morris Dickins

Vice President

Scott Horsburgh

Treasurer

Julie Morris

General Secretary

Vacant

Minutes Secretary

Merry Dickins

COMMITTEE MEMBERS

Jacinta Flattery-O'Brien

Gary Chapman OAM

Sue Chapman

Sharron Horsburgh

Public Officer/CB News Editor

James Morris

INDEX

Culburra Beach & Districts Men's Shed	Page 4-5
From the Committee	Page 6
Emergency Contacts	Page 12
Callala Community Garden	Pages 14-15
Callala Markets	Page 18
Culburra Beach & District Garden Club.....	Page 24
From the Doctor	Page 32
Bushcare.....	Page 35
Community Contacts	Page 38

Note from the Editor:

The CBnews proudly supports our community, consider subscribing for a small yearly fee.

Please contact us with any local issues or concerns with the intention of having it published.

MR MIKE SPARKLE BRIGHT

ABN: 50 534 685 256

Professional Window Cleaner



All Types of windows cleaned including Fly Screens, Window & Door Frames Tracks and Runners

We can offer our customers Solar Panel Cleaning (*single story only*)

Very Reliable • Free quotes

**Ring Mike on:
0406 467 026 or 02 4446 6684**

Scott Horsburgh

Ph: 4446 6544

18/55 Emmett Street
Callala Bay 2540

**Your Local Butcher
The Meat Specialist**



USE, LEARN & SHARE SKILLS



CALL US ON
0494 055 329

**CULBURRA BEACH &
DISTRICTS MEN'S SHED**

FIND US BEHIND THE POLICE STATION.

Culburra Beach & Districts Men's Shed

Happy New Year to all our friends, supporters and valued customers! We look forward to maintaining and developing our products and services for you in 2025.

The December Callala Markets were a great success for us, and it appeared our fellow stall holders also did well on the day. We're pleased to be part of these markets, where stallholder fees are ultimately used to support local community organisations.

Last month showed how concerned both locals and visitors are about habitat loss for native birds, possums, microbats, bees and insects. As a result, we had record sales of nestboxes, microbat flats and native bee/insect hotels. It will be challenging to create enough replacement stock in the short break over Christmas/New Year.



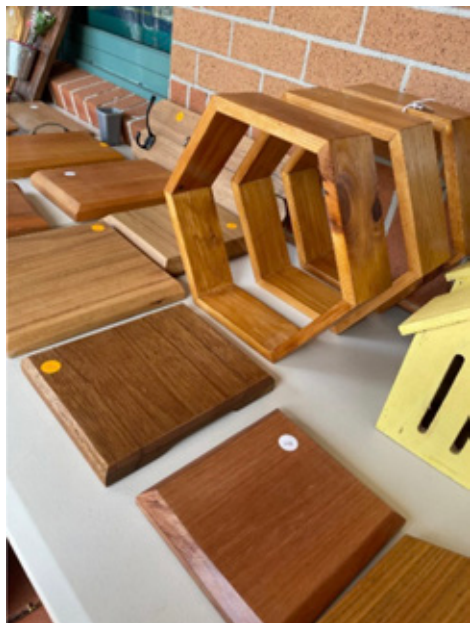
*Just some of our nestbox range
and hat racks*

There was also great interest in our timber craft, with its emphasis on recycled materials. Hardwood chopping boards and re-used seasoned fence paling items were very popular for both home use and as Christmas gifts.

The Shed re-opens after our Christmas break on Monday 6 January. This is also our first "Fix it Monday" day for 2025, where we undertake minor repairs and refurbishments for local residents. Bring in that broken chair,

garden ornament or family heirloom and we'll endeavour to bring it back to life. Our welding bay is also always ready to assist with repairs to metal and steel items.

Of course, we don't just do repairs. We're always open for 'special orders', either using our existing timber stock or new material at cost. Just bring in a dimensioned sketch and we'll see what we can do for you.

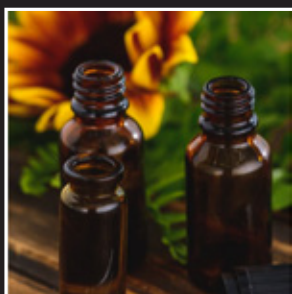


*Recycled
hardwood
chopping
boards*

We'll be at the Callala Markets on Saturday 11 January, from 8am 'til 1pm to bring in the New year with lots of ideas for your home and backyard. Come along and check out our range of timber craft, nestboxes and native bee hotels. Or just call in for a chat and see what Shed membership can offer you.

The Shed is open for door sales on Mondays and Wednesdays from 8.30am to 1.00pm, so feel free to call in and peruse our full product range. In particular, you can check out some of our handiwork that is too large to transport to the Markets.

Follow us on Facebook or join our Facebook group to stay up to date with news and events. You can contact us through Facebook, via email to [CBDMS1@outlook.com](mailto: CBDMS1@outlook.com) or by phone on 0494 055329.



FirstLine Holistic Therapies

At FirstLine Holistic Therapies we specialise in alternative healthcare, using safe and effective natural medicines. We also offer a personalised Lifestyle Medicine Program for heart disease, diabetes, and cancer.

Gastro-Intestinal Health • CardioMetabolic disease
Men & Women's Reproductive Health • Mood disorders
Skin conditions • Fatigue/stress & sleep problems

Serving the Shoalhaven area.

Telehealth appointments also available.

Located at 132 Junction St. Nowra.
(inside Nowra Medical & Skin Centre)

Phone: 0407 489 063

Email: johntylor@multicitymedical.org

Callala Bay Community Association Inc - General meeting Wednesday 11th Dec 2024

Patricia White, Mayor spoke to the meeting about the Council Finance Committee and advised:

- Terms of reference of SCC Finance Committee- Mayor appointed 5 members as it is a mayoral committee: Keith Brodie, Stuart Coughlan, Ian (Sandy) Foreman, Peter Dun, Mark Crowther and Deputy Mayor Peter Wilkins. Terms of reference (TOR) were written by the committee and councillors- Cnsls Jason Cox- Ward 1, Jemma Tribe- Ward 2 and Karlee Dunn- Ward 3 have been appointed by Council. The aim is for Council to be back in the black by 2027.
- SRP- Special Rate Variation (SRV). Action Plan will be outlined at the next council meeting re cost savings, including fleet management.
- Data for the conditions and subsurface of our roads is being reviewed by an independent consultant. It will show the cost needed to maintain the roads and will prioritise the order of fixing roads. The \$40m for roads around Callala will start after Christmas.
- Patricia spoke of the boat ramps in the area and the amount of work needed to update them.
- The Recission motion-- council will pause the motion, as Character statements are 6 years old, are generic and are out of date. They had not been released for public comment and there is a need to be more detailed, updated and individualised.

Chair's report

- The Committee discussed starting a petition for public toilets near Wowly Creek, given the Council's latest advice to the negative. This has been an issue consistently raised by the community for many years, so we are interested in members' views about how best to pursue the matter.

- Please consider this: the General Secretary position is still vacant;
- CBCA membership payment of \$5.00 per family is due by 31 Dec 24.
- Australia Day -Breakfast on the Bay – update
- Australia Day raffle prizes- looking for donations and for people to sell tickets
- Reminder that the CBCA Annual General meeting will be held in March 2025, at which office bearers and committee members will be elected. Please start thinking about how you can contribute and whether there are others in the community you believe would be willing and able to contribute by taking on a role.

Working groups reports:

- Christmas lunch- Gary Chapman
- Callala Bay School Art project- Julie Morris

72 entries, independent judges. Some students were recommended for art lessons. Sausage sizzles in January 4th, 11th, 18th. – Morris Dickins is looking for volunteers.

The next Meeting of the CBCA will be held on Wed 12 Feb 25



Callala Gallery

15 Callala Beach Road Callala Beach

Open 10am to 3pm

Week Days & Weekends

Weekly classes in H2O Oils, Acrylics, Watercolours, Pyrography, Mixed Media, Mosaics & Clay Sculpting.

Workshops by appointment.

Artworks for sale by local Artists.

We do take Commissions & have a lay-by agreements.

Ph: 4446 5770 Mob: 0407 465 770

www.artclassesnowra.com

Callala Gallery on Facebook



Peter Rose EyeQ Optometrists

Visit eyeq.com.au for convenient online bookings

59 Kinghorne Street, Nowra

4421 4511



Peter Rose



Robert Rose



JERVIS BAY FILM TRANSFERS

Records



Cassettes



Onto
CDs



VHS movies



onto DVDs

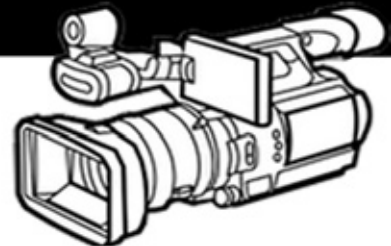


8mm Films onto USBs
Convert CDs to Mp3s
Scan Slides onto USBs

Call: 0401076338

jervisbayfilmtransfers.com.au

Wedding Videographer



We Build Corporate Websites

FIONA PHILLIPS MP

Federal Member for Gilmore


I'm here to help with issues like Medicare, Centrelink, aged care and pensions, the NDIS, Veterans' Affairs and community grants. I can also arrange flags, and special birthday and anniversary messages.

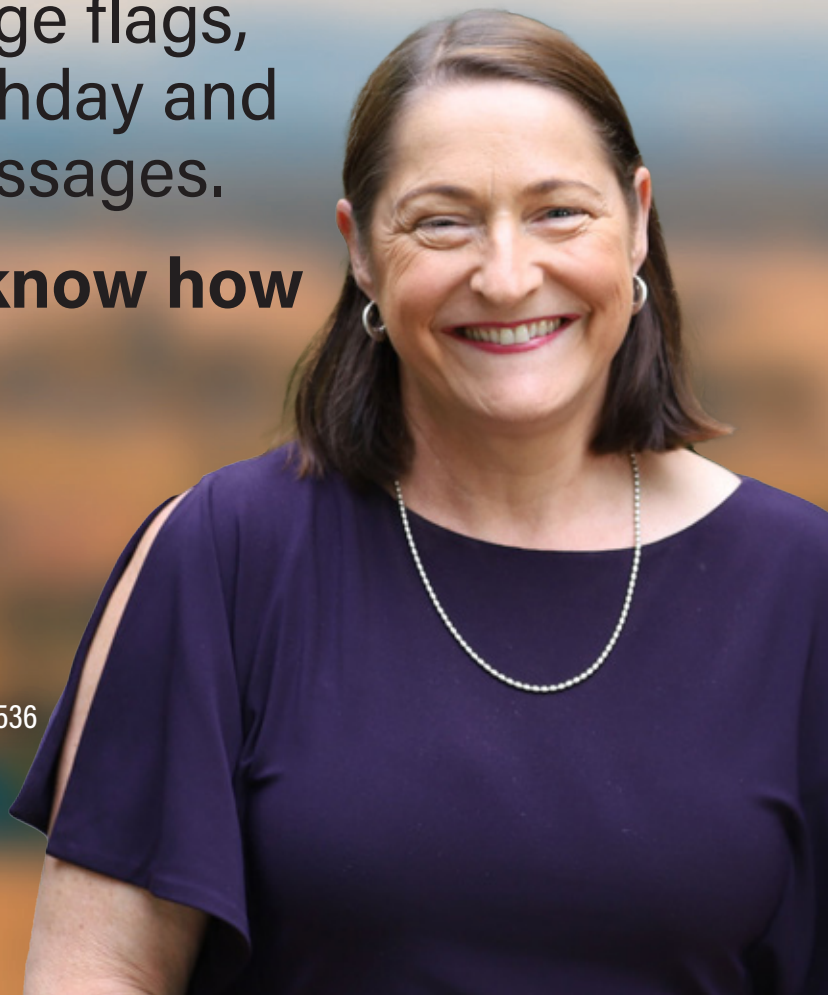
Please let me know how I can help you.

 (02) 4423 1782

 Fiona.Phillips.MP@aph.gov.au

 fionaphillips.com.au

 3/59 Junction St Nowra NSW 2541 &
1/6-8 Orient St, Batemans Bay NSW 2536



Authorised by Fiona Phillips MP, Nowra.



ANGLICAN CHURCHES of Culburra Beach | Callala | Currarong

Callala Church Service - 5pm Sunday
All Welcome | 4:30 pm for afternoon tea
St Marks, 2 Hunter Street, Callala Bay



Please contact us for more
information or visit our web site.

p: 02 4447 3277

e: office@culburraanglican.asn.au

www.culburraanglican.asn.au

Growth Group Bible Studies
Contact us for times and locations

Caterpillar's Playgroup
9:30am Friday @ Culburra Beach Anglican

289youth
Friday Nights @ Culburra Beach Anglican



Having problems with
your computer?

Hayton.Biz IT

Local computer
support & service.

Onsite IT & computer support for business and home users.

Experienced technicians, same day service, No call out charge for the local area* & competitive rates.

Laptop repairs/servicing also undertaken.

- Computer repairs
- General PC report
- Computer servicing
- General PC advice
- Internet problems
- Email setup
- Virus/malware removal
- Network configuration
- Domain registration
- Server installation
- Server support
- Backup configuration

0422 599 305

Call
Today

Culburra Beach Orient Point Men's Shed Inc.

The Shed by the Lake

Location: Old Scout Hall Cnr West Crest & Wollumboola Lane

NEW MEMBERS WELCOME

You are invited to join the Longest Established Men's Shed in Culburra, learn new skills and bring your own, come and enjoy the company of our friendly members and participate in a variety of activities

We are open 8:30am - 12:30pm Tuesday, Wednesday & Thursday

All enquiries: 0498 023 781

www.culburra-beach-mens-shed.org.au

Facebook: Culburra Beach Orient point Men's Shed <https://www.facebook.com/cbopmshed>



CLUB HOURS

Mo: 10AM - 7PM
Tu: 10AM - 9PM
We: 10AM - 10:30
Th: 10AM - 10:30
Fr: 10AM - 10:30
Sa: 10AM - 10:30
Su: 10AM - 9PM

43 Callala Beach Road, Callala Beach
02 4446 5313 clubcallala.com.au
generalmanager@clubcallala.com.au

accommodation now available at:



31 Callala Beach Road, Callala Beach
02 4446 5313 or 0460 543 859
beachandbaystay.com.au



for information & bookings, call us on
02 4446 5313 (option 2) or contact
callalagolf@bigpond.com
open every day pending weather



Lunch Service:
Every Day From
12:00PM - 2:30PM
Dinner Service:
Tuesday to Sunday
5:00PM ONWARD
Monday (Pizzas Only)
5:00PM - 7:00PM

\$15 Lunch Specials
EVERY DAY

Tuesday \$23 Rump Steak Night
Wednesday \$18 Chicken Schnitzel Night
Thursday \$20 Pizza Night
Saturday \$15 Club Beef Burger Lunch Special
Sunday Roast \$20 Lunch & Dinner

ALL WEEKLY SPECIALS DINE-IN ONLY

MONDAY:

Indoor Bowls - from 12PM

TUESDAY:

Veterans Golf - from 7:30 to 1PM

WEDNESDAY:

Callala Mixed Social Bowls - from 12PM

Ladies' Golf - from 8:30 to 1PM

FRIDAY:

Fitness Class - from 10:30AM

SATURDAY:

Mixed Golf Comp - from 7:30 to 1PM

EVERY DAY:

Barefoot Bowls \$15 per person,
includes equipment hire
kids aged 12 & under play for free

THURSDAY:

Bowls Raffle - tickets sold from 6PM

Bowls Schooner Draw - from 7:45PM

FRIDAY:

Mega 50 Meat Tray Raffle -
tickets sold from 6PM, drawn 7PM

SATURDAY:

Fisho's Raffle -
tickets sold from 12PM to 1:30PM

LAST SATURDAY OF MONTH:

Meat Tray Raffle -
tickets sold from 6:30, drawn 7PM

SUNDAY:

Meat & Seafood Raffle -
tickets sold from 4PM, drawn 5PM

TUESDAY:

Happy Hour from 4PM - 6PM

Social Darts from 5PM

Trivia starting 6:30PM

THURSDAY:

Bingo from 11AM

Happy Hour from 5PM - 7PM

Pool Competition - rego from 6:30PM, starts 7PM

Member's Badge Draw 6:30PM, 7:15PM, 7:45PM

SATURDAY:

Live Entertainment Every Week

LAST SATURDAY OF MONTH:

Second Chance Draw & Members Badge Draw

SUNDAY:

Fisho's Weigh-In on 4th Sunday at 2PM

Callala RSL Country Fishing Club



Callala Beach Road, Callala Beach 2540

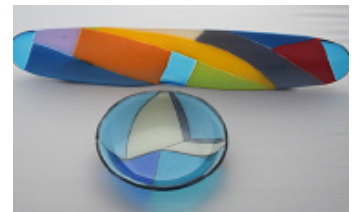
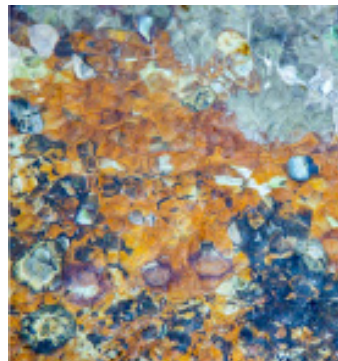
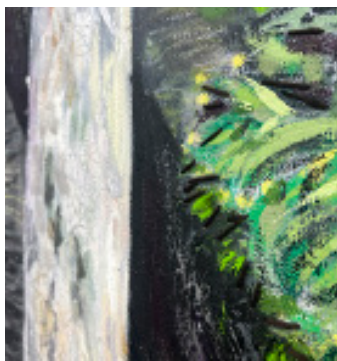
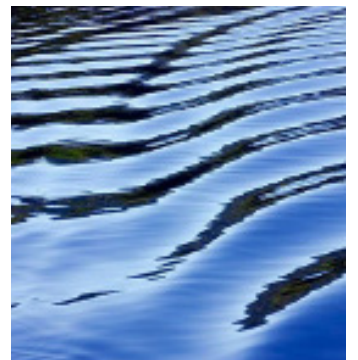
COURTESY BUS AVAILABLE FOR A GOLD COIN DONATION
SERVICING CALLALA BAY, CALLALA BEACH, AND MYOLA
MONDAY TO SATURDAY FROM 4PM, SUNDAYS FROM 3:30PM



CURRARONG ART TRAIL

currarongarttrail.com.au

first Saturday of every month
10am - 2pm



Emergency Phone Contacts

Situation/Service	Phone Number	Website
Injury or Health Crisis	000	ambulance.nsw.gov.au
Motor Vehicle Accident	000	police.nsw.gov.au
Police	000	police.nsw.gov.au
Police – Non Emergencies	131 444	police.nsw.gov.au
Police Crime Stoppers	1800 333 000	police.nsw.gov.au
Household Fire / Hazmat	000	fire.nsw.gov.au
Bushfire	000	rfs.nsw.gov.au
Shoalhaven RFS District Office	4424 4424	rfs.nsw.gov.au
Bushfire Survival Plan	-	rfs.nsw.gov.au
Bush Fire Information Line	1800 679 737	-
Flood, Storm and weather warnings	-	bom.nsw.gov.au
Storm / Flood	132 500	ses.nsw.gov.au
Power Outages	131 003	endeavourenergy.com.au
Main Road Closures	132 701	livetraffic.com
Local Road Closures	1300 293 111*	shoalhaven.nsw.gov.au
Shoalhaven City Council	1300 293 111	shoalhaven.nsw.gov.au
Shoalhaven City Council After Hours	4421 3100	shoalhaven.nsw.gov.au
Shoalhaven Hospital	4421 3111	-
Milton Hospital	4455 1333	-

If you are **deaf** or have a **speech** or **hearing impairment** dial **106** for the Text Emergency Relay Service

Useful Apps & Websites

Visitors to the area can download the following free mobile apps to stay informed of the latest advice and information in the event of an emergency.

Emergency+ App

The Emergency+ app is a free app developed by Australia's emergency services, Government and industry partners.

The app uses GPS functionality built into smart phones to help a Triple Zero (000) caller provide critical location details required to mobilise emergency services.



emergencyapp.triplezero.gov.au

Other Helpful Apps & Websites



Fires Near Me NSW



Floods Near Me



Weather Zone



COVID Safe



BOM



Marine Rescue



Live Traffic



Facebook



Twitter



DISASTER DASHBOARDS

shoalhaven.disasterdashboards.com/get-ready/overview



Father Christmas

The Callala Community Centre, together with the Callala Public School and Sandra MacKenzie-Clark held a gathering of pictures and paintings all complete by students of the Callala Public School. There were over 70 entries, and many were of a significant standard. The event also received a number of 'open' Christmas presents and non-perishable food items, all collected for the Salvation Army. Our thanks go to the Management Committee of the Community Centre and a special thanks to the Callala Beach RSL Subbranch who presented a \$200.00 cheque to the Salvo's. Congratulation to all.



Crookhaven Mechanical Repairs



4447 5845

FREE Pick - Up Callala - Bay - Beach - Myola

We Can Service Your NEW Car AND Protect YOUR Warranty

Major Trip Prep - Suspension Upgrades - Bullbars - Accessories



ARC-AU21881

crookhavenmechanical.com.au

MVRLic35947

Contacts:

- Madeleine Read 0418 267 880 • Gail Fitzgerald 0412 930 080 • Megan Hodges 0433 668 453

WHAT IS CURRENTLY GROWING

Firstly, tomatoes of numerous types, alongside basil. These photos of 'Tomatoberry' show glossy, chunky little pieces of goodness, and our first tomatoes to ripen. We are also growing zucchinis, beans, chillis and cucumbers which are just starting to produce fruit and looking promising. Some blueberries are starting bear fruit and a couple of passionfruit are hanging off the vine. This seems unseasonally early. Our strawberries are coming to an end after a highly productive autumn but we hope they will put on another flush. The garden still presents us with seasonal challenges and we look forward to a time when all the good things align!



The Lyrebird Preschool Corella class sent us a special thankyou message outlining how they enjoyed last month's excursion by finding strawberries, carrots, potatoes, and worms and, of course, watering the garden. You can see just how much they worked up an appetite by morning tea time.



CHRISTMAS RAFFLE WINNERS

Our Christmas Raffle was drawn 14th December @ noon, following our Produce Market. Congratulations to the winners:
1st Prize: Sharon, 2nd Prize: Joe, 3rd Prize: Kerry and 4th Prize: Jill.
Sharon was very excited to win the cart, let alone the goodies!
All were locals.



This has been a very successful fundraiser for the community garden and enormous thanks must go firstly to Cellarbrations at Callala Bay for hosting our raffle prize and for their support, then Christine, Victoria and Megan for coordinating the prizes and ticket sellers, and lastly those who volunteered to sell tickets for us.

CCG CHRISTMAS PARTY, SUNDAY 1ST DECEMBER

Setting up on the morning of the party last Sunday 1 December, there was some angst about the weather! Fingers were crossed and weather apps consulted as about seven of us forged ahead. All was ready by about 10.30am for a 4pm start.

Victoria masterminded delicious alcoholic and not-so-alcoholic cocktails happily consumed by partygoers. Scrumptious savoury and sweet finger food was provided by many generous members to ensure no one went hungry. Regular gardeners proved they're great cooks – Val produced her taco dish, Madeleine chicken sandwiches, Barry sausage rolls, Lyn a healthy salad, and Noelene, a moist fruit cake. Our newest regular, Wanda, offered wicked jelly squares and ice-cream cake slices and Christine, her rumballs. Gail prepared a zucchini slice, Victoria brought meatballs and smoked salmon blinis, Sally a cheese platter and Colleen a cheesecake. Club Callala's tasty pizzas were successful! It was a successful party with about 50 coming including federal and state politicians, Fiona Phillips and Liza Butler, mixing with everyone.

Many were very pleased to see Robyn and chat with her. She noticed the many changes to the Garden since last April and we hope she'll return. Packed up and out by about 7.45pm and home for a cup of tea with feet up was amazing! A huge thank you to all involved and special thanks to Victoria, not just for cocktails but also for her great leadership over the past three years.



Family Fun Fridays resume in February 9.30 to 11.00

Our last Fun Friday for the year at the end of November, under Doris's guidance, involved decorating our potted trees.

Thank you children. We look forward to inviting families back to these mornings on the last Friday of the month, from February 2025.



WHATS ON

No Fun Friday in December

January – No General Meeting

Saturday 11th January 2025 - Produce Market

Working Bees as per 1st & 3rd Sundays and usual **Tuesday** and **Thursday** mornings for those available in January.

WE NEED MORE VOLUNTEERS Do you have ANY free time that you would like to spend being useful in our Community Garden? No previous experience required! You don't need to bring gardening know how, just enthusiasm.



Callala Bay Pharmacy

2/55 Emmett Street, Callala Bay 2540 Ph: 4446 4251

Hours: Mon-Fri 9am-5.30pm; Sat 9am -12.30pm

Friendly, professional service

- Diabetes Australia supplies • Vaccinations • Gift lines
- Blood pressure monitoring • Medication packing

Phone: 4446 4251

Dr John C Wright B.V.Sc.

CULBURRA VETERINARY CLINIC

7 Weston Street, Culburra Beach

9am-11am weekdays

4-6pm Mon, Tue, Thurs

4-5pm Wed, Fri

10am-12pm Sat

CALLALA VETERINARY Consulting Room

22 Emmett Street Callala Bay

1-3pm weekdays by appointment

Please phone: **4447 3851** for appointments, enquiries or after hour calls



E & S Painting Services

- Interior & Exterior Painting
- Friendly Local Service
- Excellent Rates
- Quality Assured

M: 0422 560 696 H: 4446 5056

Graham Worts



Vinnies

CALLALA BAY

SHOP

- **High quality second-hand items**
- **Clothing, bric-a-brac, books, linen, beach towels, toys, games, DVDs, jewellery and much more!**

VOLUNTEERS NEEDED

**YOUR TIME IS THE MOST VALUABLE
GIFT YOU CAN GIVE.**

For details of how you can help,
visit www.vinnies.org.au or pop into the shop
for an application pack.

Find us at: **59 Emmett St, Callala Bay**

Opening hours: **Monday to Friday - 8.30am to 4pm,**
Saturdays - 8.30am to 2pm (during summer/peak times only)

**We welcome donations of non-bulky items during opening
hours. For pickups, please call 4421 7244.**

Callala Markets

The December Callala Markets were very well attended with all vendors reporting lots of interest and sales. We had lots of locals and tourists looking for last minute Christmas gifts. There was huge interest in the Men's Shed offerings of nestboxes and the like for our local wildlife.

All our stall holders offer a range of locally made products, ranging from handmade candles and soaps, wooden plaques and bowls, beautiful handmade pottery and jewellery through to crystals, baby booties and hats, designer cards, and soft knitted children's toys. So come along and check out the variety available at your local market.

Your support of local craft makers and stall holders assists our Markets in supporting the local community. All profits from stall holder fees contribute to future donations.

Our first Markets for 2025 will be on Saturday 11 January from 8am to 1pm at the Callala Community Centre, Emmett Street, Callala Bay. With holiday season in full swing, this should be a cracker day for all concerned. Get there early to avoid the heat and crowds and grab a bargain.



Beautiful weather for the December Markets

The Callala Community Garden will also be open for visitors on that day. Fresh seasonal produce is always popular, so come on down and check the entire range.

We always hope for fine weather, but we'll be there - rain, hail or shine.

Want to join us? Contact Sandra on 0413 581419 for stallholder enquiries.

2nd Saturday
EACH MONTH
42 EMMETT ST,
CALLALA BAY
8:00AM - 1:00PM

The graphic features a circular logo on the left with the text 'Callala Markets' in a blue script font and 'Community focus' in a smaller blue font below it. To the right, the event details are listed in bold blue text. At the bottom, there are icons for Facebook and Instagram. The background is a light beige color with scattered seashells.

End of year kids' party

On Tuesday, 17 Dec, Oosh by Katie held the end of year kids' party in the grounds of the Community Centre. There were 25 or so children with parents and minders close by. The picture shows the children enjoying themselves on the water slide and a great deal of fun and laughter was had by all.

To all the children, thanks for your help with the Newsletters this year and I look forward to this continuing next year,

Merry Christmas to you all.



SOUTH
COAST
SOUL
CALLALA



LOCAL
YOGA
PILATES
YIN YOGA

WEEKLY CLASSES AT CALLALA BEACHFRONT HALL

MONDAY 5:30PM PILATES STRETCH

TUESDAY 9:30AM YOGA FLOW

WEDNESDAY 5:30PM YIN RELAX YOGA

89 QUAY RD - ALL WELCOME - PROPS AND MATS AVAILABLE

INQUIRIES: 0422 433 159

📷 @CARLA_VERSITANO 📷 @SOUTH.COAST.SOUL

🌐 SOUTHCOASTSOUL.COM.AU



WAYNE'S

W E L D I N G

ABN: 72 721 264 751

Wayne Birt

Aluminium or Steel Boat Repairs

Trailer (box or boat) Repairs

MIG and TIG

Custom work for cars, boats or caravans

Phone: 0407 203 041



Tennis @ Callala Bay



Fancy a hit?

Located here in Callala Bay, the courts are attached to, and managed by the Callala Bay Progress Hall. They are located at the corner of Wearne and Morton St.

Bring your own rackets and balls!

Ring 444 64 313 to book

Available for casual and regular bookings.

Lessons—call Daisy on 049 053 7551

Culburra Beach & District Garden Club Inc.

Hi everyone, Christmas is behind us now and I hope everyone enjoyed the season. It won't be long before the hot cross buns arrive alongside packets of Easter eggs. The garden club is still in recess until February 15th. We celebrated our Christmas luncheon at Club Callala where Jo, Stephanie and Chef looked after us by providing a delicious meal followed by a yummy dessert. Yours truly ate everything that was offered and more as we provided an assortment of chocolates with tea /coffee. President Bev thanked members for their support and wished everyone a safe Christmas and a Happy New Year.

Summer is with us and days can be extremely hot to humid. Here are some tips for the summer garden.

1. Begin the new year by planting a packet of seeds- something easy like marigolds or cosmos- grown in full sun, they will give a quick result. Once planted you will always have these seeds. For the vegie garden try Rocket or Mizuna (an Asian salad green and quite easy to grow).

2. Keep your potted plants well- watered and add a soil-wetting agent purchased from Bunnings, so the water will soak in the soil.

3. Deadhead all your annuals and perennials especially roses. Do it as if you are picking a bunch for a vase. For roses give a sprinkle of dynamic lifter and good watering to encourage new flowers.

4. Always use personal repellent when gardening as mozzies and ticks can be a problem. Check your yard for standing water in saucers or any other containers as they only need a small amount of water for mozzies to breed.

5. As the humidity increases, and we live in a coastal area, fungal diseases on leaves and stems and root rot can be a problem. Water in the morning and not on the foliage. Citrus should

be given a good soaking each week to ensure the steady growth of young fruit .

6. This humidity also affects Lavender so allow the soil to dry before watering. Our Gardens magazine (Garden Clubs of Aus.) advises that you prune Lavender by a third after flowering. Leave some leaf growth on the main stems as Lavender won't produce new leaves on old wood.

7. Don't forget to top up your bird bath regularly with clean water -we must care for our feathered friends in summer.

8. Have some shade cloth or other cover on hand to throw over vegie beds on those super, hot days.

The philosopher who said that work well done never needs doing over never weeded a garden.
~Ray Everson

A weed is a plant that has mastered every survival skill except for learning how to grow in rows. ~Doug Larson

“Plant and your spouse plants with you; weed and you weed alone.” – Jean Jacques Rousseau

We can complain because rose bushes have thorns or rejoice because thorn bushes have roses. Abraham Lincoln.

Our Garden Club meetings will commence on Saturday February 15th 1.30pm at Culburra Anglican Church, Penguin Head Rd, Culburra Beach. Cheers to all and happy gardening,
Doris Carpenter - 4446 5631



Thinking of having a function or meeting . . .



Why not have a look at the Callala Community Centre?

There is table seating for 110 with crockery and cutlery and a modern kitchen.

The centre is airconditioned and has state-of-the art audio visual capability for presentations, training and other entertainment included as part of the hire fee.

Car-parking is adjacent to the Centre and the Callala shops are opposite the Centre.

The Centre has grass surrounds, giving you the option of outdoor training as well as indoor.

If you have an exercise or social group or are looking for a place to hold your next celebration, call Cynthia on **0412 121 737** for enquiries. You can also look for us on **Facebook**

FREE

Pre-Loved Clothing & Book Stall

First Saturday of the Month
at the

Callala Community Centre

9.30am to 12.00 NOON

Clothes in good condition can be dropped off at the stall (on the day only). If clothing can be delivered by 10am; this will allow them to be displayed.

Sponsored by the Anglican Church, Callala

OVER 50? RETIRED?

**Invest \$25,000
in my not for profit
boating/tourism venture
and buy a partnership in
a hands-on business-
hobby and interest.**

**for full details see website:
www.wooden-boat-charter-australia.com.au
*The Time Warp River Cruise Company***

The Anglican Parish of Culburra Beach

Anglicare Op Shop

Shop 3/4 Weston Street, Culburra Beach

Opening Hours:

Mon-Fri 9am - 4pm

Sat. 9am-12pm

** Closed Public Holidays*

Clothing, bric-a-brac, books, toys, linen, games, DVD'S, jewellery and more.

EFTPOS available

Saleable Goods are most welcome, but we can't accept furniture, white goods, mattresses, encyclopedias, computer ware and videos.



You can drop goods at shop or in charity bin situated at Culburra Anglican Church, Penguin Head Rd, Culburra.

If you would like to volunteer, please contact
Manager Neroli McCusker:
4447 4084 (Shop) or 0401 466 590

Defibrillators in Callala Bay



There is a number of defibrillators in Callala Bay.

They are located at:

- Club Callala
- IGA Supermarket
- Jervis Bay Sailing Club
- Callala Community School
- Callala Medical Centre
- Callala Community Centre
- Callala Rural Fire Brigade
- Myola Tourist Park

If you know the location of others, could you please contact Merry on 0439 809 088.



Callala OOSH By Katie

Callala Before and Afternoon Care for school-aged children by qualified and caring staff.

For information please call Katie-

0419917793 or 0427976669

email: callalaooshbykatie@gmail.com

Santa had the right idea – only visit people once a year



Callala Bay
Open 7 Days A Week
Market-Fresh Fruit and Vegetables
Lotto Newspaper ATM

Ph: 4446 4811

It Pays to Shop Independent

Located in Bayview Plaza, 55 Emmett Street, Callala Bay

How the locals like it.

Callala Bay Progress Hall and Tennis Court



**Looking for a venue with history and charm?
Available for both casual and regular hire**
*Recently renovated ... and now with new audio visual
equipment available! Reasonable rates.*

**Bookings Ph: 444 64 313
or via Facebook**
75 Boorawine St, Callala Bay

Regular Community Users

Dru Yoga: Monday (2:45pm)
Craft Group: Tuesday (10am)
Friends of Dance: Tuesday (2:30 pm)
Yoga: Thursday (9am)
Tai Chi: Saturday (8am)

Lyn ph 0419427574
Yvonne ph 444 66 280
Ann ph 0418 477828
Anna ph 0405 102 234
Jenny ph 04477 43179

Tennis Lessons: Saturday (midday)

Daisy 0490 537 551

<https://callalabayprogresshall.weebly.com/>





WELCOME to the Callala Community Centre, conveniently located opposite the shops in Emmett St, Callala Bay.

We are one part of the Shoalhaven Community Information Network (SCIN). Our technology has been upgraded to include solar panels, a storage battery, and satellite communications to provide an independent, continuous, communication solution with the Nowra Emergency Centre.

The information can be seen on the screens located at the Centre.

An audio-visual system has been installed in the Centre offering flexible and comprehensive facilities, including;

- **blue tooth; computer connectivity; the ability to operate DVDs and CDs and play personal audio-visual files from a USB drive or SD memory card.**

If you want to have a wedding; memorial service; business conference; group gathering or family reunions the Callala Community Centre is well worth considering.

Our facilities include

- **A well-equipped kitchen; air conditioning; raised stage and off-street parking, and**
- **Crockery, cutlery and glasses and seating for up to 120 people**

**For all hiring enquiries contact Cynthia on 0412 121 737
or email cynirwin974@gmail.com**

Follow us on Facebook at Callala Community Centre.



Callala Public School Parents & Citizens Association Inc.
Emmett Street, Callala Bay, NSW, 2540
callalapandc@gmail.com

Callala Public School P & C Canteen Volunteers Needed

Callala Public School's canteen is operated by the P&C with all profits invested back into the school.

It is a purely volunteer run canteen, with Dan Applebee being our manager who looks after the daily running of the canteen along with the help of other volunteers.

At the present time we only have one other volunteer. In order to keep the canteen operational we need more volunteers. If you have time to spare 9am - 12, be it once a week, fortnightly, monthly or even once a term we would love your help.

Duties include preparation, heating and serving of lunch orders, assisting with window sales at 1st break and some light cleaning.

To volunteer in the canteen you are legally required to complete the following:

Working With Children check, which is obtained through Services NSW. It's free as you are a volunteer.

<https://www.service.nsw.gov.au/transaction/apply-for-a-working-with-children-check>

Food Handler Basic Training online through NSW Food Authority

<https://www.foodauthority.nsw.gov.au/training/food-handler-basics-training>

Can you help us? It's only 3 hours and 15 minutes. For more information or assistance in completing the online forms please contact the school office on 44464352 and one of our P & C representatives will contact you, or email us at callalapanc@gmail.com

We look forward to meeting you.

FROM THE DOCTOR

I want to share some exciting news that could make a significant difference in your healthcare experience—especially for women due for cervical screening. The introduction of self-collection kits for cervical screening offers a more convenient and comfortable alternative to traditional methods. This change is designed to encourage more women to participate in regular screenings and help detect cervical cancer early, when it's most treatable.

Historically, cervical screening involved a visit to the doctor, where a healthcare professional would collect the sample. While this method is effective, many women find it uncomfortable or feel anxious about the process, which can sometimes lead to delays in getting screened. With self-collection, you can now take your own sample at home, in a private and familiar setting. This means fewer barriers to accessing screening and more women getting the care they need.

The process is simple. The kit contains easy-to-follow instructions, and the sample is collected using a small swab, similar to a cotton bud, which is then sent to the laboratory for analysis. Research has shown that self-collection is just as accurate as the traditional method for detecting the human

papillomavirus (HPV), a key cause of cervical cancer. Cancer Council Australia states that self-collection can be as accurate as clinician collect.

I understand that taking time for healthcare can sometimes feel challenging, but early detection is crucial. Cervical screening is one of the most effective ways to prevent cervical cancer, and self-collection makes it easier and more accessible for everyone. If you're due for a screening or have any questions about the self-collection kits, please don't hesitate to reach out to your friendly team at Callala Medical Centre.

YOUR AD HERE

Advertise Your Business With
The **CBnews Today!**

Contact the Editor for more info
editor.cbcanews@gmail.com

The Groutfather

Tile, Grout & Silicone Hygiene Cleaning, Sanitising (Mould)
& Restoration/Repairs

Specialising in:

Showers, Bathrooms, Kitchens, Floors & Outdoor areas

FREE inspections/Quotations

Servicing Callala Bay & Beach, Myola & Culburra

George - 0481 811 962 – Email: shelmara62@gmail.com

Dispose of Marine Flares

It's time to safely dispose of your expired marine flares! Find the dates and locations for drop-off below.

Ulladulla - Next to Marine Rescue NSW Base,
Off Wason Street, Ulladulla

Saturday, 11 January 2025 16:00 17:30,

Saturday, 19 April 2025 16:00 17:30

St Georges Basin - Basin View Boat Ramp,
Basin View Parade, St Georges Basin

Sunday, 12 January 2025 7:30 9:00

Woollamia - Boat Ramp, Frank Lewis Way,
Woollamia

Sunday, 20 April 2025 7:30 9:00

Callala Bay - Boat Ramp, Watt St, Callala Bay
(Jervis Bay Territory 2540)

Sunday, 12 January 2025 10:30 12:00

Crookhaven Heads - Boat Ramp, Culburra
Beach

Sunday, 20 April 2025 10:30 12:00

Greenwell Point - Boat Ramp, Adelaide Street,
Greenwell Point

Sunday, 12 January 2025 13:00 14:30

Shoalhaven Heads - Boat Ramp, Hay Ave,
Shoalhaven Heads

Sunday, 20 April 2025 13:30 15:00

For more information visit: www.nsw.gov.au



**Before the crowbar was
invented, crows had to
drink at home**

Sponsors Wanted for the Callala Community Garden



We have 4 new beds in the public area that need a sponsor to help with the purchasing and planting costs. It is only \$50 a year for a bed and would make a great gift for someone, as well as doing something positive for the community. Please contact Kaye Carter (sponsorship officer) at KayeCarter2021@gmail.com



Free Herbs in the Public Area

Our herb garden bed sponsored by 'helloworld Nowra' is full of free herbs for the public to take. Please come and help yourself and tell your friends.

**Psychic Fair Cancelled
due to unforeseen
circumstances**

CULBURRA & DISTRICTS COMMUNITY HEALTH SERVICES Inc.



Hello EVERYONE,

We would like to tell you a little about our Culburra & Districts Community Health Services Inc.

We are a Not-for-Profit organisation and was incorporated (CDCHS) on 8th March 1988.

We have a great Medical Bus service for you to avail yourselves of if needed, runs Monday-Friday (no Public Holidays). If you have a Medical appointment (only) either locally or into Nowra and you would like transport, please phone:

CULBURRA PHARMACY
187 PRINCE EDWARD AVE
CULBURRA BEACH
02 4447 2382

All you need to do is supply your details –

NAME, ADDRESS, PHONE NUMBER, DATE & TIME, WHERE YOUR MEDICAL APPOINTMENT IS THAT YOU NEED TO GO TO AND RETURNING FROM.

The Chemist shall put your details onto the Medical Bus run sheet for that day.

We cover the areas of: Currarong, Callala Bay, Callala Beach, Myola, Orient Point, Culburra Beach, Pyree, and Greenwell Point.

A small donation is always welcome as this along with our Op Shop helps to keep this fabulous community service running.

If you would like to be a volunteer Bus Driver (no special licence is required) or Op Shop Gem, please contact:

Contact: Neil Watson (Bus Drivers) 02 4447 4713
or
Pat Porter (op Shop) 0408 019 930.

Bushcare

Callala Bushcare takes a break from formal sessions from the start of the Christmas School holidays till February. We spent our final session updating our Action Plans for the sites where we work from Myola through Callala Beach, Benton Sands and Callala Bay. These plans won't be finalised until we meet with our Council Supervisor in February. One aspect that we have struggled with is our community consultation. We really do want feedback, yes negative feedback is probably more helpful than positive feedback.

One chronic hot topic for our group is the dumping of garden waste in Natural Areas. When compiling weed lists in these areas it is clear that some weeds like lawn grasses or Nutgrass, are in bushland due to lawn clippings being dumped. It's the season to be generous, so I'm going to assume that most of this 'dumping' is done in the belief that 'green is green' and that no damage will be done, and the garden vegetation might actually 'help' the bushland. No, wrong, not the case at all! And whoever it is from Council who has advised property owners who phone that it's OK to move fallen branches from their yards into adjacent bushland, is wrong! If there's too much for your bin, give me a call (number below) and I'll sort it.

I like to continue with some random Bushcare over the summer, although not at any set time, so as usual my offer is if you'd like to come along and find out what Bushcare involves around Callala Bay, my name is Diana and phone is 0419 531 902. The really heavy large weedy tree removal work was done in Callala Bay/Callala Beach between 12- 20 years ago. The team was more numerous, younger and fitter. The work

**I told my surgeon I
could no longer afford
his services. He said,
"suture self"**



Tai Chi & Qigong for Health

Callala Beach Community Centre

Tuesdays 11:30am

To Book contact:

Joanne

0416 271 408

- Feel the flow of vitality -

we do now is referred to as secondary Bushcare work, or micro weeding. In terms of fitness, it does require a capacity to either kneel or sit on the ground.

Despite numerous enquiries to Council staff, there remain some outstanding questions relating to Emmett St/Boorawine Creek Reserve. It's still unclear when the tree and large branch removal in the APZ (Asset Protection Zones) which extend six metres behind properties backing onto the Reserve, will be done. There is still no answer as to whether the slashing of all grassy areas in the reserve will be done. It looks like the new slasher purchased by Council is not able to access all the open areas. To help guide the Council slashing crew we have been directed by Peter Swanson, the head of Bushcare to install 'do not mow' signs in three sections which are outside the APZ zones and suitable for allowing trees and shrubs to naturally regenerate which will go some way towards compensating for the trees that are going to be removed.

Best wishes for the Season from our crew.

Any further information or if you would like to try out Bushcare at another time, my name is Diana, phone 0419 531 902.

A New Petition

Many will be aware of the unsightly, unhealthy and inappropriate behaviour of some who use the beach at Wowly Creek during the holiday breaks. The Shoalhaven City Council (SCC) has, in the past installed a 'portaloo' at the track leading to Wowly Creek, but this has created its own problem as it is not regularly cleaned and has been subject to vandalism.

The Callala Bay Community Association (CBCA) has organised a petition to be at various places in the village and at Wowly Creek over Christmas and the New Year periods, aimed at the SCC agreeing to install a permanent toilet facility at Wowly Creek. This matter has been raised with the Council over the past decade or so, and it would appear this petition is the only way to get traction. So, if you see a CBCA person with the ubiquitous 'clip board', please support this petition.



**What if there was
no such thing as a
hypothetical question?**



VEOLIA
Mulwaree Trust

The new Sharp printer has been purchased through the generosity of a grant from the Veolia Mulwaree Trust.

Truck & Forklift Driving School

Desire Bhugon

RMS Approved: LR, MR, HR, HC (Auto
and Manual)

OLDER DRIVER ASSESSOR



Tel: 02 444 66861 Mobile: 0418 654 572 Email: desdschool@bigpond.com



Callala Physiotherapy and Pilates

Pre and Post-operative Rehabilitation | Reformer Pilates
Sporting injuries | Arthritis management

www.callalaphysiopilates.com.au

Phone: (02) 4413 0349 Email: info@callalaphysiopilates.com.au

Property

One
Realty



Specialising in all aspects of real estate, Property One Realty has had a local presence for over 20 years. We offer sales, holiday and permanent rent services. Contact our team or stop in to discuss the best options for your investment.

Ensuring your next move is a positive one.

www.propertyone.com.au

44466800 | callala@propertyone.com.au | 9/55 Emmett Street, Callala Bay

COMMUNITY CONTACTS

Emergency Police Fire Ambulance: 000

Nowra Police Local Area

Command: **4421 9699**

Crime Stoppers: **1800 333 000**

(anonymous reporting)

Police Assistance Line: **131 444**

(non emergencies)

State Emergency Service: **132 500**

Jervis Bay Marine Park: **4441 7752**

Callala Medical Centre: **4446 5350**

Shoalhaven Hospital: **4423 9500**

Milton Hospital: **4454 9100**

Shoalhaven City Council

General enquiries, business hours: **4429 3111**

Emergencies & after hours: **1300 293 111**

Justices of the Peace

Howard Duncan: **4446 6535**

Dallas McMaugh: **0400 189 875**

Culburra Beach & District Garden Club

We meet every 3rd Saturday of month

Feb-Nov at 1.30pm

Venue: Culburra Anglican Church
Penguin Head Rd, Culburra Beach.

For more details contact

Doris Carpenter: **4446 5631**

**Culburra & Districts Community
Health Service**

Visit the Op Shop and pick up a bargain!
Proceeds help maintain the Medical Bus
that transfers people to Nowra for medical
appointments from Greenwell Point,
Culburra Beach, Callala Bay & Beach,
Currarong and Myola.

Please contact Culburra Pharmacy on
4447 2382 to arrange transport.

Culburra Beach & Districts Men's Shed

Location: Beside the Banksia Community
Hall, off Fred Evans Lane, Culburra
Beach (IRT entry).

Open: 8.30am to 1.00pm, Monday and
Wednesday.

All enquiries: Phone **0494 055 329** or
email **CBDMS1@outlook.com**

**Culburra Beach Orient Point Men's
Shed Inc.**

Location: Old Scout Hall Cnr West Crest
& Wollumboola Lane

Open 8:30am - 12:30pm Tuesday,
Wednesday and Thursday

All enquiries:

Phone 0498023781 or email
cbopmshed@gmail.com

www.culburrabeachmensshed.org.au

FACEBOOK: Culburra Beach Orient Point
Men's Shed

www.facebook.com/cbopmshed

Callala Community Garden

52 Emmett Street Callala Bay
Opposite The Shops

Victoria Maudson: **0424 590 105**

email: callalacommunitygarden@gmail.com

 /groups/CallalaCommunityGarden

Drop In's welcome

DISCLAIMER

The Publisher, known as Callala Bay Community Association Incorporated, does not accept any responsibility or liability in any way whatsoever with regard to any of the paying advertisers contained in this newsletter. Additionally the views and comments of all reports submitted are the responsibility of the person/organisations submitting same, including those from SCC (Shoalhaven City Council), which are usually copied verbatim from correspondence and are included for your information. The reports do not necessarily reflect the views of the Publisher.



Join the bank that's bigger for you.

Community Bank Nowra & Districts

Bendigo Bank
98 Kinghorne Street
Nowra NSW 2541
02 4422 7574
nowra@bendigoadelaide.com.au
Bendigo Bank



Vanessa Middleton
Licenced Real Estate Agent
0492 945 367
vanessa.middleton@ljhooker.com.au
nowra.ljhooker.com.au



Vanessa is a well known face in our community, a **local of Callala for 28 years** and working locally in real estate for the past **17 years** with extensive knowledge and insight into the local market. Her dedication to customer service, innovation, honesty and openness have been the cornerstones of Vanessa's record of success over many years. Known for her friendliness, understanding, enthusiasm & strong negotiation skills.

A consistent number of repeat referrals is a testament to her expertise.

If you are looking for a local in real estate for buying or selling contact me today.

Happier, healthier pets

South Coast Veterinary Services is your local, independent and exclusive veterinary care provider.

Our complete range of in-home and mobile pet services take the stress out of trips to the vet ... for happier, healthier pets.



SCVS

South Coast
Veterinary
Services

Book a visit, manage prescriptions and pay online. Get in touch for more details.

Dr. Glynis Kuipers

0412 319 110

office@southcoastvet.com.au

www.southcoastvet.com.au